



Accessorize to the Max



Mobility meets Stability

# zido<sup>®</sup>

## Touchboards

205 Westwood Ave, Long Branch, NJ 07740  
 Phone: 866-94 BOARDS (26273) / (732)-222-1511  
 Fax: (732)-222-7088 | E-mail: sales@touchboards.com

Five models. Eighteen accessory categories.  
 One mobile solution that's distinctly Anthro.

Perfect for Healthcare, Labs, IT, Retail and Office.

Easy configurability in a sleek, mobile, compact design.

Durable, easy-clean shelves resist cracking and chipping and stand up to a wide range of chemicals.

Adjustable-height Zido



Zido Pole Cart



Zido Phlebotomy Cart



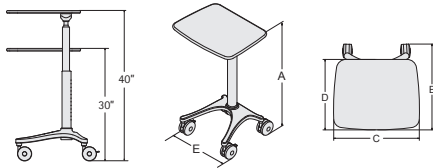
**ANTHRO**<sup>®</sup>  
 Technology Furniture<sup>®</sup>  
 -Fast and Friendly!

# Choose your Cart

## ZIDO ADJUSTABLE-HEIGHT



- Work comfortably sitting or standing, with a height range of 30"-40".
- Comes with wood cap shelf, cap shelf bracket, 2.5" diameter adjustable-height column with holes in 1" increments for accessory installation, rubber column cover, heavy cast metal base, and 4 casters (4" size, 2 locking).
- Choose from 2 widths (22" and 25") and 2 lift capacities (Standard or Super). Standard carts lift 16-30 lbs.; the Super cart lifts 27-41 lbs. These capacities are based on the weight of the items on the cap shelf. Include the weight of accessories when calculating the load on the column. Lighter loads will be harder to push down; heavier loads will be harder to pull up. These weight ranges are estimates only.
- Overall weight capacity of 150 lbs. The cap shelf has a weight capacity of 50 lbs., though the column lifts less (see above).
- Available in two color combinations: Cool Grey metal and laminate (CG/CG) or Slate Blue metal with Cool Grey laminate (SB/CG).



PRODUCT	Height (A)	Overall Depth (B)	Overall Width (C)	Shelf Depth (D)	Base Width (E)	Weight	Part #
Standard 22"	30-40"	22.25"	22"	17"	17"	50 lbs.	ZAL22zz/xx4
Standard 25"	30-40"	25.75"	25"	20.5"	21"	63 lbs.	ZAL25zz/xx4
Super 25"	30-40"	25.75"	25"	20.5"	21"	63 lbs.	ZAH25zz/xx4

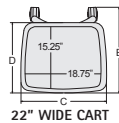


QuickShip available for Standard 22" Zido Adjustable-Height workstations only.

## ZIDO ADJUSTABLE-HEIGHT WITH LIP SHELF

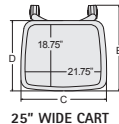
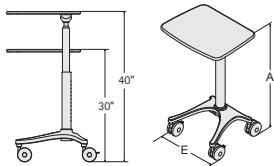


LIP DETAIL



22" WIDE CART

- It's the exact same cart as the Zido Adjustable-height above, but with a 1/2" high lip around the perimeter of the cap shelf to keep items from rolling off!
- Choose from 2 widths (22" and 25") and 2 lift capacities (Standard or Super). Standard carts lifts 16-30 lbs.; the Super cart lifts 27-41 lbs. These capacities are based on the weight of the items on the cap shelf. Include the weight of accessories when calculating the load on the column. Lighter loads will be harder to push down; heavier loads will be harder to pull up. These weight ranges are estimates only.
- Overall weight capacity of 150 lbs. The cap shelf has a weight capacity of 50 lbs., though the column lifts less (see above).
- Available in three color combinations: Cool Grey metal and laminate (CG/CG) or Slate Blue metal with Cool Grey laminate (SB/CG).



25" WIDE CART

PRODUCT	Height (A)	Overall Depth (B)	Overall Width (C)	Shelf Depth (D)	Base Width (E)	Weight	Part #
Standard 22"	30-40"	22.25"	22"	17"	17"	50 lbs.	ZLL22zz/xx4
Standard 25"	30-40"	25.75"	25"	20.5"	21"	63 lbs.	ZLL25zz/xx4
Super 25"	30-40"	25.75"	25"	20.5"	21"	63 lbs.	ZLH25zz/xx4



## Choose your Cart

### ZIDO FIXED-HEIGHT



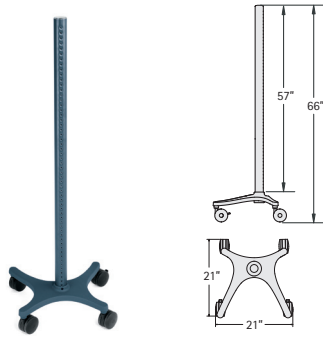
- Comes with wood cap shelf, cap shelf bracket, 2.5" diameter column with holes in 1" increments for accessory installation, heavy cast metal base, and 4 casters (4" size, 2 locking).
- Choose from 2 widths (22" and 25") and 3 heights (31", 35", and 40").
- Overall weight capacity of 150 lbs. The cap shelf has a weight capacity of 50 lbs.
- Available in three color combinations: Cool Grey metal and laminate (CG/CG) or Slate Blue metal with Cool Grey laminate (SB/CG).

PRODUCT	Height (A)	Overall Depth (B)	Overall Width (C)	Shelf Depth (D)	Base Width (E)	Weight	Part #
22"w, 31"h	31"	22.25"	22"	17"	17"	44 lbs.	ZD2231zz/xx4
22"w, 35"h	35"	22.25"	22"	17"	17"	45 lbs.	ZD2235zz/xx4
22"w, 40"h	40"	22.25"	22"	17"	17"	46 lbs.	ZD2240zz/xx4
25"w, 31"h	31"	25.75"	25"	20.5"	21"	57 lbs.	ZD2531zz/xx4
25"w, 35"h	35"	25.75"	25"	20.5"	21"	58 lbs.	ZD2535zz/xx4
25"w, 40"h	40"	25.75"	25"	20.5"	21"	59 lbs.	ZD2540zz/xx4



QuickShip available for 25"w, 35"h Zido Fixed-Height workstations only.

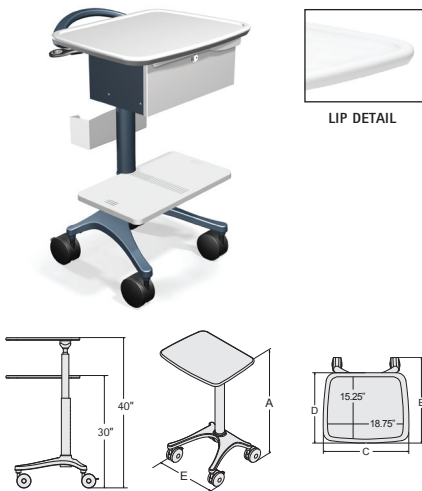
### ZIDO POLE CART



- The 66" high all-metal Pole Cart provides a strong, tall, single column to support all the accessories you need. The heavy cast metal base provides added stability for all your equipment.
- Comes with 2.5" diameter column with holes in 1" increments for accessory installation, heavy metal cast base, and 4 casters (4" size, 2 locking).
- Overall weight capacity of 150 lbs.
- Available in Cool Grey (CG) or Slate Blue (SB).

PRODUCT	Weight	Part #
Zido Pole Cart	44 lbs.	ZD2166zz4

### ZIDO PHLEBOTOMY CART



- Work comfortably sitting or standing, with a height range of 30"-40".
- The cart comes with wood cap shelf, cap shelf bracket, 2.5" diameter adjustable-height column with holes in 1" increments for accessory installation, rubber column cover, heavy cast metal base, and 4 casters (4" size, 2 locking). Bundled accessories include a 17" wide Standard Handle, 5.75" high locking Drawer, Glove Box Holder and Medium Equipment Shelf.
- The cap shelf includes a 1/2" high lip around the perimeter to keep items from rolling off!
- The adjustable-height column lifts 16-30 lbs., based on the weight of the items on the cap shelf. Include the weight of accessories when calculating the load on the column. Lighter loads will be harder to push down; heavier loads will be harder to pull up. This weight range is an estimate only.
- Overall weight capacity of 150 lbs. The cap shelf has a weight capacity of 50 lbs., though the column lifts less (see above).
- Ships in 2 boxes.
- Available in Slate Blue (SB) metal with Cool Grey (CG) laminate.

PRODUCT	Overall Depth (B)	Overall Width (C)	Shelf Depth (D)	Base Width (E)	Weight (2 boxes)	Part #
Phlebotomy Cart	22.25"	22"	17"	17"	55 lbs. / 28 lbs.	ZPHLEBSB/CG4

### Colors & Finishes

Metal Color:

Cool Grey (CG)

Slate Blue (SB)

Laminate Color:

Cool Grey (CG)

Cool Grey (CG)

**Metal surfaces** receive a baked-on, powder coat finish that's environmentally friendly and resists chips and scratches.

Wood shelves are wrapped in a durable **thermoplastic 3D laminate** that resists cracking and chipping and stands up to a wide range of chemicals.

## Choose your Accessories

### Bins



Cable Bin ZCBzz



Metal Bin ZMBzz/xx



Side Bin ZSBzz

### Extension Tube



Monitor Mount ZET26zz

### Flat Panel Mounts



Single Mount ZPMSzz



Dual Mount ZPMDSB

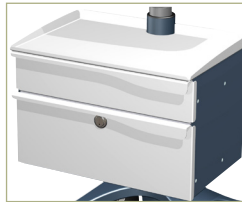
### Drawer Solutions



4.5" Drawer ZDRzz



Deep Drawer ZDDzz/xx



2-Drawer Enclosure ZDE0SB/CG

### CPU SideRacks



Standard SideRack ZSRzz  
Mini SideRack (shown) ZSMzz  
Small Form-factor ZSFzz

### Cable Management



Hooks (set of 2) ZHKCG

### Glove Box Holder



Glove Box Holder ZGBzz

### Handles



Standard Handle ZHzz



Pole Handle ZPHzz



8" wide Handle ZHHzz

### Keyboard Solutions



Keyboard Drawer ZKD20zz



Keyboard & Mouse Caddy 169BK

### Mouse Solutions



Mouse Holder ZMHzz



Swing-out Mouse Shelf 687BK

### Probe Holders



Large Probe Holder ZGCLzz  
Small Probe Holder ZGCSzz

### Security Cable, 36"



36" Security Cable 960SM

### Scanner Bracket



Scanner Bracket 886zz

### Shelves



Small Additional Shelf ZADSzz/xx  
Medium Add'l Shelf ZADMzz/xx  
Large Additional Shelf ZADLzz/xx



Small Equipment Shelf ZESSzz/xx  
Medium Equip. Shelf ZESMzz/xx  
Large Equipment Shelf ZESLzz/xx



Base Storage Shelf ZBSzz

# Touchboards

205 Westwood Ave, Long Branch, NJ 07740  
Phone: 866-94 BOARDS (26273) / (732)-222-1511  
Fax: (732)-222-7088 | E-mail: sales@touchboards.com

**ANTHRO**  
Technology Furniture®  
– Fast and Friendly!

Technology Furniture® and Zido® are registered trademarks of Anthro. feb13