

Qwizdom[®]

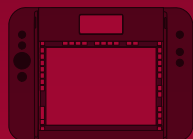
Empowering Intelligent Interaction



INTRODUCING
The Q7 Presenter Tablet



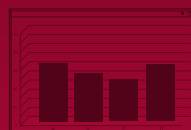
SRS



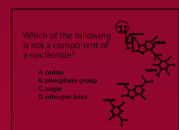
WIRELESS TABLET



SOFTWARE



REPORTING

A small icon of a chemistry diagram showing a nucleotide structure, representing the curriculum component.

Which of the following is not a component of a nucleotide?

- A. codon
- B. phosphate group
- C. sugar
- D. nitrogen base

CURRICULUM

INTRODUCING



The **Q7** Presenter Tablet

Qwizdom's new wireless tablet combines advanced RF technology, presenter controls, and response system interactivity* to help teachers and students connect and collaborate in completely new ways.

The sleek, modern design allows teachers to draw, annotate, and control computer applications without being tethered to a workstation. Additionally, presenters can view notes, presentation indicators, and input from participants on the tablet's LCD screen.

FEATURES:

Interactive whiteboard capabilities

- Wirelessly create, annotate, and interact with screen objects.
- Run computer applications with programmable pen keys and hard keys.
- Utilize pen on tablet interface which offers all mouse functions.
- Use with other whiteboard devices (not required).

Presentation control device

- View presenter notes and presentation indicators privately on LCD screen.
- Control volume, window shade, and virtual laser pointer.
- Move from slide to slide and launch new presentations using navigation keys or pen.
- Pose questions and interact with learning objects or games.

*Additional features available when used with the Qwizdom Student Response System (optional)

- View student response data.
- Discreetly view requests for help on LCD screen.
- Control SRS presentation features.

Note: The Q7 tablet can also be used as a student tablet/response device. For more details, see "Student Hardware Options."



Interactive Learning System

Qwizdom Connect is a full-scale assessment and instruction solution which provides the flexibility to perform diagnostic, formative, and summative student assessments on a schedule established by teachers and schools.

The software enables the tracking of student progress by recording which state standards the student has mastered, as well as gathering data on pacing, performance analysis, predictors of success or failure, and early identification of academically at-risk students.

Qwizdom Connect software provides:

Detailed Diagnostics

Receive detailed diagnostics at classroom, school, and district levels.

Flexible Test Delivery

Support computer, paper-based, or classroom presentation activities in Live Editor or your favorite presentation program.

District Access

Allow administrators to view district, school, class, and student reports by score, activity performance comparison, demographics, standards mastery, and skills.

Online Resource Database

Access a vast library of learning objects, lessons, and question banks.

State-specific Curriculum

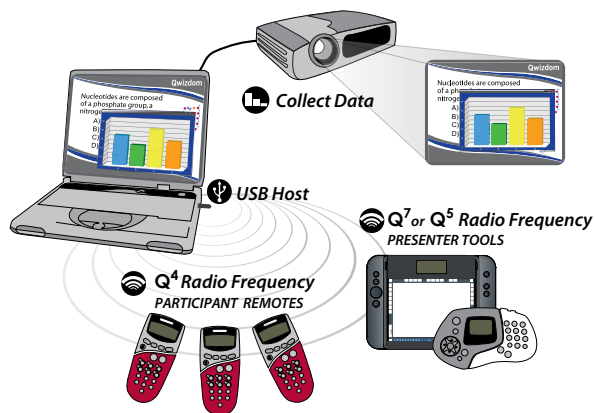
Utilize premade standards-based curriculum and assessments, or create your own which can be tagged to any state standards.

Instant Assessment

Use Qwizdom's Quick Mark feature or Student Response System to track student performance, grade tests and activities, or instantly view "results" graph on LCD screen.

Qwizdom Student Response System

Make data collection easier with Qwizdom's Student Response System. Whether data is collected into the gradebook, exported to other applications, or projected during a presentation, it's as easy as the click of a button.

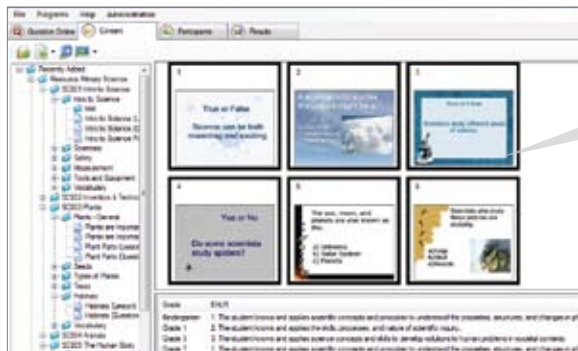


I have been using Qwizdom for three years and it has changed the environment of my classroom in ways I never thought possible. Qwizdom has become more than a learning tool. I have seen the results through observations and directly on tests; Qwizdom teaches the standards. – Peter Dudik – Teacher, Mount Shadows Middle School, CA

Qwizdom Connect Features

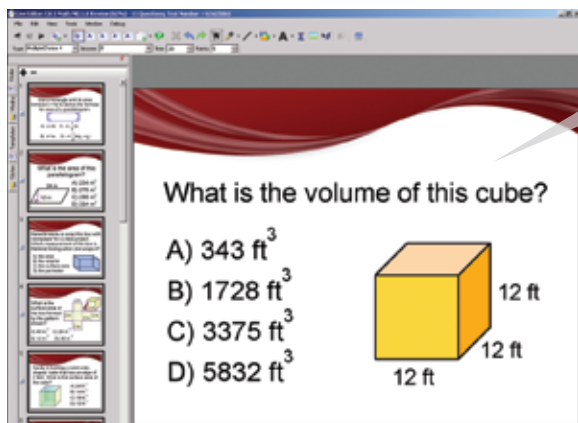
Qwizdom Connect provides effective and easy-to-use tools for classroom management, curriculum, and reporting. Enhance lessons and activities with interactive games, online media search, content sharing, and thousands of lessons and educational resources. Stay organized with Connect's classroom management tools including seating charts, attendance, and grouping.

Connect



- Gain access to Qwizdom Connect's software features.
- Choose from a variety of presentation and classroom management tools.

Live Editor



- Create and present content on-the-fly with Live Editor.
- Use premade templates and styles.
- Link state standards to any lesson, test, or presented activity.

Qwizdom Actionpoint™ Toolbar



PowerPoint is a registered trademark of the Microsoft Corporation in the U.S. and/or other countries. Keynote is a trademark of Apple Inc., registered in the U.S. and other countries.

I was amazed to see how the system resurrected and motivated so many of my students.
– Juan Sanchez – Teacher, Lincoln High School, TX

Paper-based Activities/Answer Key Mode



- Enter existing class worksheets, paper-based tests, and textbook materials in the Answer Key Mode.
- Use Qwizdom's Quick Mark feature or Student Response System to score student activities.

Qwizdom Online



- Access an interactive lesson database with 20,000+ learning objects and thousands of lessons.
- Receive notifications announcing new content.
- Share content with peers.
- Search for new lessons, assessments, and media.

Qwizdom Connect Premium Services

- Gain access to Premium Content including ReadySet® MyState and ReadySet® Skills.
- Distribute common assessments district-wide.
- Utilize Qwizdom Online Reporting.

Interactive Games



- Quickly turn any activity into an interactive game.
- Choose from multiple games for added motivation and healthy competition in the classroom.



ReadySet[®] Curriculum

Qwizdom's ReadySet curriculum is designed to teach key concepts as outlined on state exams, giving educators the real-time assessment data they need to monitor and adjust instruction for maximum student benefit. This research-based curriculum fits into any academic program and ensures that all students are given the instruction needed to excel.

PRETEST: Each curriculum package begins with a pretest, providing teachers with a quick and complete evaluation of previously attained knowledge and student mastery of key concepts as assessed on state exams.

READYSET ACTIVITIES: Access dozens of standards-specific mini-lessons ranging from 10–20 minutes in length. Keep instruction focused as each lesson addresses grade-level benchmarks.

Students learn through

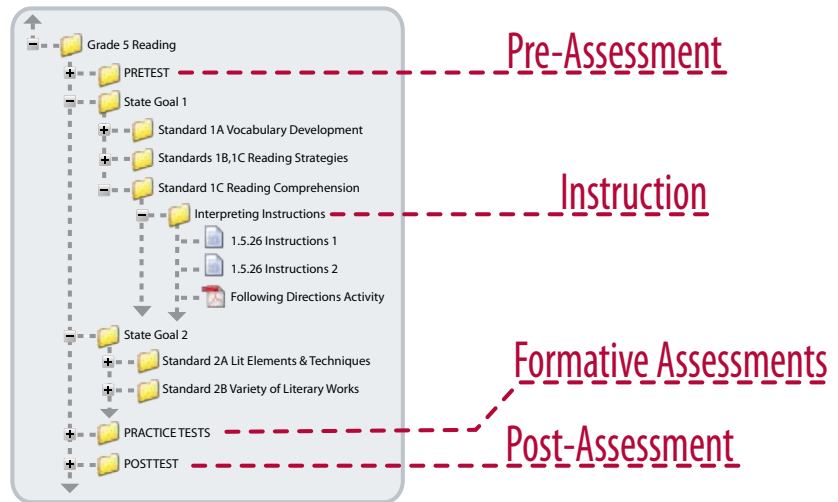
- assessment questions
- interactive multi-media
- explanations
- examples
- graphics

Teachers can use ReadySet lessons as is, or customize them to meet the needs of their classroom. ReadySet incorporates instruction of key concepts, outlining solutions to standards-based questions. This extra step provides instant feedback to individual students and then takes the time to explain and teach essential skills. By expanding the answers to include the problem-solving techniques and question analysis strategies, students are given instruction at the moment when they are most receptive.

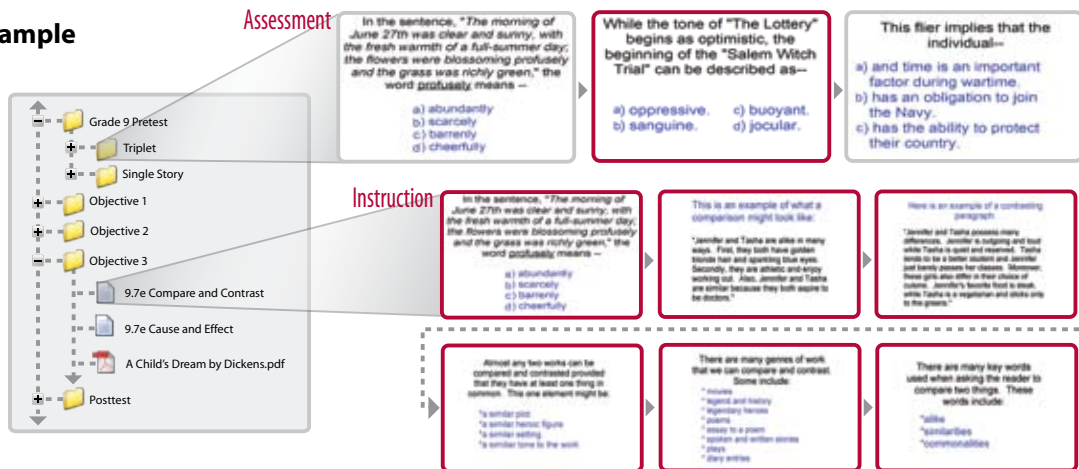
Standards-based lessons combined with the instant reporting system means teachers are reviewing results and redirecting instruction, not grading endless papers. Students receive valuable feedback with real-time assessments.

POSTTEST: Each curriculum package ends with a posttest that identifies every assessed grade-level standard. Given prior to the state exam, educators still have time to tailor instruction to help students with any specific area of need.

Each ReadySet Skills and ReadySet MyState package provides content organized by skills or state standards. To find out what is available for your state visit www.qwizdom.com/Education/Products/curriculum.html.

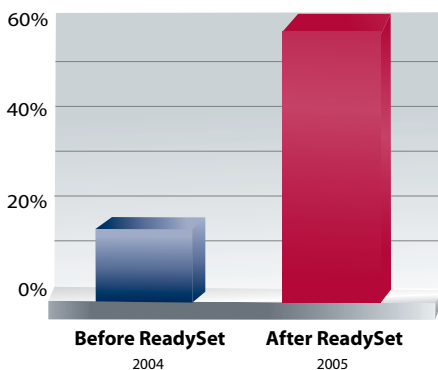


ReadySet Sample



Qwizdom’s ReadySet curriculum meets the needs of data-driven instruction. Unlike most supplemental programs that simply assess student skill mastery, ReadySet offers instructional activities and assessment to help teach the skills and processes necessary for students to show improvement on state-mandated testing while easing the workload of teachers and streamlining communication with administrators.

Effects of ReadySet on State Test Commended Performance Scores



In 2004, 15% of the students in Gayla Docman’s 5th grade class had “Commended Performance.” In 2005, there was a 300% increase, bringing the total percentage of Commended Performance students up to 60%. Mrs. Docman attributes their success to the arrival of Qwizdom remotes and ReadySet curriculum. She used ReadySet with Qwizdom Q4 remotes two hours a day for 4 weeks.

I believe Qwizdom is the reason my students did so well on the math state test. I like Qwizdom because it keeps the students engaged, and it is a different approach to my regular classroom teaching style. My students like the immediate feedback of whether they get the problems correct or not, and they like the feel of the remotes in their hands. They think of it as an “updated version of math.” - Gayla Docman - 5th Grade Teacher, London ISD, TX

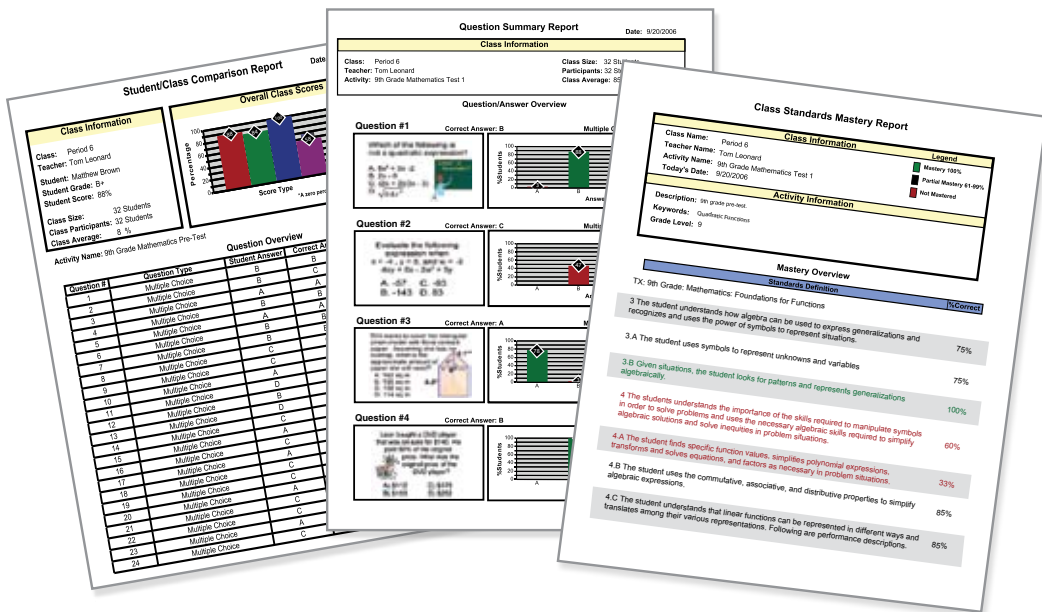
I used the ReadySet curriculum in one of my classes for four months and saw a 3% increase in scores. This 3% could mean the difference between passing and not passing the Ohio Achievement Test (OAT). When using ReadySet, I was able to determine quickly who did not understand a concept and which students could move forward. I truly believe Qwizdom helped raise my students’ ability to do well on the state test. – Nancy Tyrrell – Teacher, Leighton Elementary School, OH

Comprehensive Reporting

Qwizdom Connect is the ideal solution for data-driven decision-making in the classroom and offers a variety of reporting options including exporting data to Microsoft Excel®. With Qwizdom's reports, educators and administrators can get data on individual students or entire classes. Reports can be drilled down to sub-groups, individual questions, or the standards addressed.

Report Types

- Student Standards Mastery
- Student Questions
- Question Summary
- Class Standards Mastery
- Sub-Group Summary
- Student/Class Comparison
- Class Answers



Online Reporting*

Teachers and administrators can view district, school, class, and student reports by score, performance comparison across schools, activities, demographics, standards mastery, and skills. All these reports provide instant student performance data, enabling teachers to quickly identify specific needs and follow up with modified instruction.

Teachers using ReadySet curriculum and online reporting are able to track student progress in real time on assessments that align to the format, content, and difficulty of today's high-stakes tests.

* Available with Qwizdom Connect Premium Service

Excel is a registered trademark of the Microsoft Corporation in the U.S. and/or other countries.

The power of standards-based curriculum, coupled with engaging interaction and instantaneous data is powerful! Every educator deserves to have this tool!

– Peg Portscheller – Chief Learning Officer, Center for Performance Assessment, CO

Q2™ RF**Q4™ RF****Q5™ RF**

Student Hardware Options

Available for Mac and PC

COMMON FEATURES

Use with any class size

More than 1,000 remotes can be used with a single computer.

Save time grading

Student responses can be automatically entered and scored.

Provide individual feedback

Right/Wrong indicator feature on the remotes gives students instant feedback after every question.

Avoid signal interference

Hardware is based on an IEEE RF standard to help ensure conflict-free operation.

Assist shy students

“Help” option lets students discreetly signal the instructor for assistance.

Teach in any setting

Remotes have a range of 500+ feet.

Administer paper tests

Navigation buttons and device displays allow students to independently work on paper-based assignments, and answer at their own pace.

| | Q2 | Q4 | Q5 | Q7 |
|--|----|----|----|----|
| INPUT FEATURES | | | | |
| Multiple Choice | • | • | • | • |
| Yes/No | • | • | • | • |
| True/False | • | • | • | • |
| Single Digit Numeric | • | • | • | • |
| Rating Scale Input | • | • | • | • |
| Multiple Mark | | • | • | • |
| Numeric-Fraction/Decimal/Negative Number | | • | • | • |
| Sequencing | | • | • | • |
| Text Input | | | • | • |
| Pen on tablet interface for annotation | | | | • |
| Pen on tablet interface offers all mouse functions | | | | • |
| DISPLAY FEATURES | | | | |
| 3- Line custom E-Ink™ | • | | | |
| LCD screen | | • | • | • |
| Request Help | • | • | • | • |
| Right/Wrong Feedback | • | • | • | • |



Q5TM RF

Q7TM RF

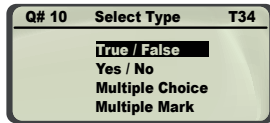


Qwizdom Presenter Options

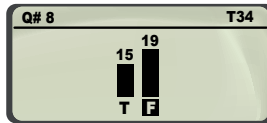
COMMON FEATURES

- Display Student Help Request Log.
- Pose a spontaneous question.
- Navigate between slide sets.
- View/select menu options.
- Display “results” graph on LCD screen.
- Project “results” graph to entire group.
- Pause or play media.
- Randomly select students.

Common LCD Screens



Question Type



Results Graph



Requesting Help

| | Q5 INSTRUCTOR REMOTE | Q7 PRESENTER |
|---|----------------------|--------------|
| FEATURES | | |
| Play and pause media | • | • |
| Pose spontaneous questions | • | • |
| Navigate between presentation slides | • | • |
| Radio Frequency (RF) 802.15.4 | • | • |
| Pick random student | • | • |
| Display graph of student responses | • | • |
| Works with any Qwizdom RF student remote system | • | • |
| Pen, Highlighter, Line, Text Tools | | • |
| Programmable Navigation Keys | | • |
| Slate/portable whiteboard with 7.0" x 5.15" active area | | • |
| Add a question slide | | • |
| Access images, web, and multi-media resources | | • |
| Control computer volume | | • |
| Access multiple activities, files, or class lists | | • |
| DISPLAY | | |
| Backlit 5-Line LCD screen | • | |
| Large 2.14" x .96" graphic LCD with backlight | | • |
| Private Response Graph | • | • |
| Students requesting help | • | • |
| Tool selection | | • |
| View speaker notes | | • |

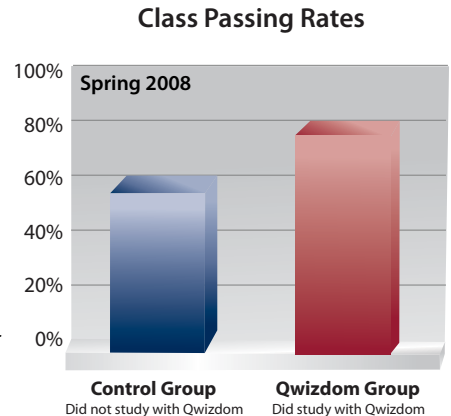


Success

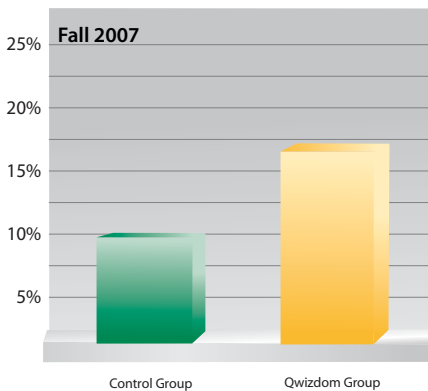
This year I was lucky enough to participate in a study of ReadySet, Qwizdom's state standardized curriculum, from April 1, 2008 to May 1, 2008. ReadySet covers all the TEKS students are responsible to know for the TAKS test. For this study, I chose one class of 25 students as the Qwizdom Group. They used the remotes with the ReadySet program as a review tool every day for 4 weeks before the TAKS test in May.

The day of the TAKS came and all 8th grade science students in Texas were tested. I was pleased to see that the Qwizdom Group had a passing rate of 80%. This was excellent! I chose my other class of 25 students as the Control Group. Both classes were similar in ability, male/female ratio, and size. The Control Group never used the Student Response System or the ReadySet program, and we reviewed for the TAKS test in a traditional way that is done with all students in the 8th grade. The Control Group average was 60%. This was a significant difference from the Qwizdom Group!

These results have convinced me that next year I will use the ReadySet program with all my students. The Qwizdom Student Response System coupled with the ReadySet curriculum is an excellent tool that helps all students prepare for their state test in a fun way that they enjoy. - Adah Stock - 8th Grade Science Teacher, Texas



Overall Test Score Percentage Increase



In November 2007, I began using the Qwizdom Student Response System in my classroom. We were all very excited and enthusiastic to begin this case study. The remote system was used in a class of 28 - 5th grade math students. The control group, who did not use the Qwizdom remotes, consisted of a similar 5th grade class, made up of 27 students. A pretest was administered to both groups in October 2007, and a posttest in June 2008. The test consisted of 30 math problems, for a total of 100 points, covering most of the Massachusetts Math frameworks. The average score for the pre and posttests were as follows:

| | Avg. Pretest | Avg. Posttest |
|---------------|--------------|---------------|
| Trial Group | 65% | 82% |
| Control Group | 68% | 78% |

I believe that I have only scratched the surface of using the Qwizdom Student Response System in my classroom. The math curriculum offered with the system has many great lessons and assessments which were ready to be used immediately. I believe the Qwizdom Student Response System is an invaluable tool for teachers. With the increasing demands placed upon us, this system helps us use our time more efficiently, use data to drive our decisions, and most importantly, motivate and improve student learning. - Eileen Lindsey - Teacher, John F. Ryan Elementary School, MA

Need more info? We are here to help!

Call 1.877.794.9366, email info@qwizdom.com, or visit www.qwizdom.com.



Qwizdom's Award-Winning Classroom Solutions

Qwizdom is now an integral part of my classroom; I use it to check homework, tests, worksheets, premade lessons and quizzes, PowerPoint® presentations, and review games. The best part is the instant feedback and the fact that I never have to grade! I know instantly whether my students understand a topic or need help. My students are more engaged with Qwizdom than any other instrument I have tried in my 13 years of teaching! They like to know if they are getting problems correct and it really boosts their confidence when they get them right. I think Qwizdom is one of the most innovative systems out on the market and it has made my job much easier. Our Academic Performance Index raised almost 30 points in 2006! I believe that Qwizdom was a factor in increasing our test scores last year and I'm sure we'll see an even bigger jump this year!!



205 Westwood Ave, Long Branch, NJ 07740
Phone: 866-94 BOARDS (26273) / (732)-222-1511 | Fax: (732)-222-7088
E-mail: sales@touchboards.com | Site: www.touchboards.com