

# InfinixST

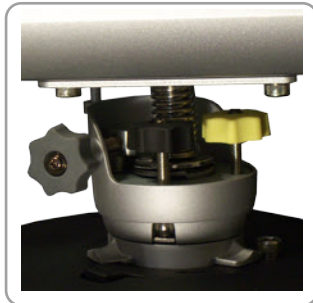
## Universal Short Throw Projector Wall Mount



205 Westwood Ave, Long Branch, NJ 07740  
 Phone: 866-94 BOARDS (26273) / (732)-222-1511  
 Fax: (732)-222-7088 | E-mail: sales@touchboards.com

### When you need style and function choose the InfinixST wall mount.

The InfinixST Wall Mount from Recordex is designed to look sharp and deliver the goods at the same time. With high-end features such as tool-free micro-adjustment knobs and a brushed aluminum finish the InfinixST sets a high standard.



**Easy Installation & Setup.** Convenient single-stud installation and plenty of adjustment options to allow for perfect centering of the image.

**Tool-free Micro-Adjustment.** Aligning the image from a short throw projector can be a challenge unless the mount is equipped with pan, tilt and swivel micro-adjustment. The color coded knobs on the InfinixST allow for easy tool-free micro-adjustment of the mount head.

**Tidy Cable Management.** The projector's connection cables are routed through the boom arm for a clean tidy looking installation.

**Telescoping Boom Arm.** With the telescoping boom arm you'll have plenty of room to adjust the throw distance from the mount to the wall so you can perfectly fill the display area. Select the InfinixST model that matches the throw distance requirements for your projector.

**Lifetime Warranty.** The InfinixST short throw wall mount carries a lifetime warranty against defect in workmanship or materials.

Specification	Model	
SKU/Part Number	500530ST	501250ST
Mounting Pattern	Ø325mm	
Material/Finish	Mount & Wall Arm: Steel & Brushed Aluminum Alloy Trim: Black Commercial Grade Plastic	
Max Projector Weight	33 pounds	26.46 pounds
Throw: Mount Center to Wall	Min: 12.2" Max: 20.87"	Min: 26.3" Max: 49.2"
Mount Weight	7.28 pounds	9.92 pounds
Mount Dimensions	4.33" x 8.47" x 25.04"	4.33" x 8.47" x 53.86"
Mounting Hardware	Universal Projector Mounting Hardware: M3, M4, M5, M6	
Adjustment	Boom: ±5° tilt; Mount Head: 360° Swivel; Mount Head Micro-Adjust: ±10° tilt, ±10° Swivel, ±10° Pan	