

ELMO TRAINING SESSION #4

USING THE SMART VERSION 10 SOFTWARE WITH THE ELMO TT-02u AND THE ELMO TT-02s

If you are use to the Smart Version 10 software with your Smart Interactive Whiteboard you will note that Smart placed an Icon with the picture of a document camera right in the top center of their software. If you have an ELMO document camera like the TT-02u or the ELMO TT-02s you will note that when tapping on the icon you will be instructed that this document camera is not compatible with Smart's Version 10 software.

The ELMO TT products have become the number one product sold into the K-12 educational market. SMART is one of the most popular Interactive White Boards that are sold to the same market. The Icon on their software is only compatible with their Smart document camera that they OEM from ELMO.

This paper will show you how to use your ELMO TT product document camera with Smart's Version 10 software.

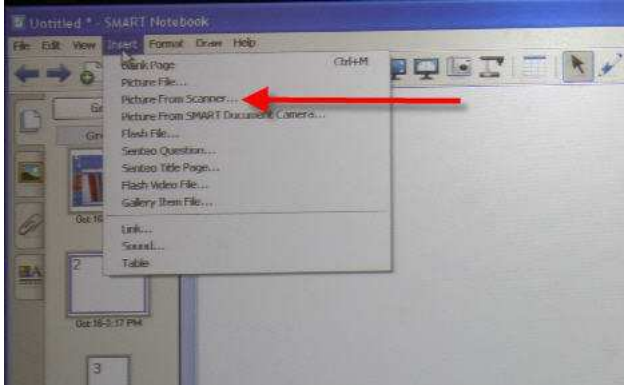
The following is understood:

- The ELMO TT product is attached to the computer running the Smartboard via the USB cable that comes with the ELMO product.
- IMAGEMATE software is installed in the computer that is running the Smartboard. We will use the TWAIN driver to interface directly with the Smartboard.

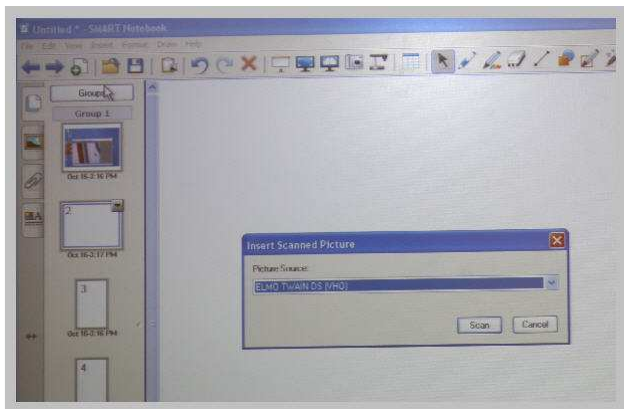
LET'S BEGIN

First delete the Smart document camera icon. You will not use this icon with the ELMO product.

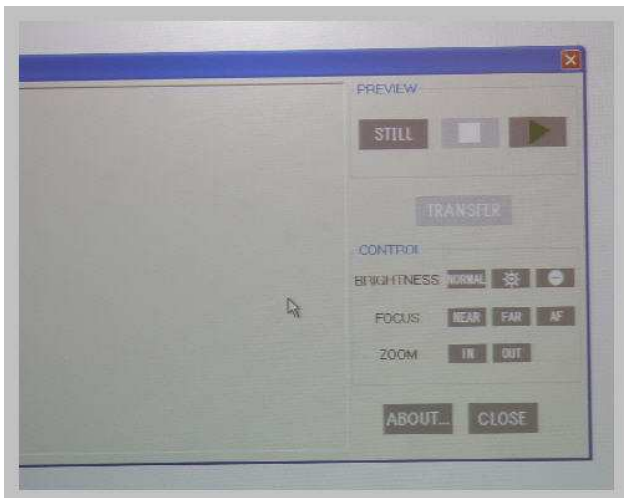
Tap on the INSERT and then tap on Picture from scanner (arrow)



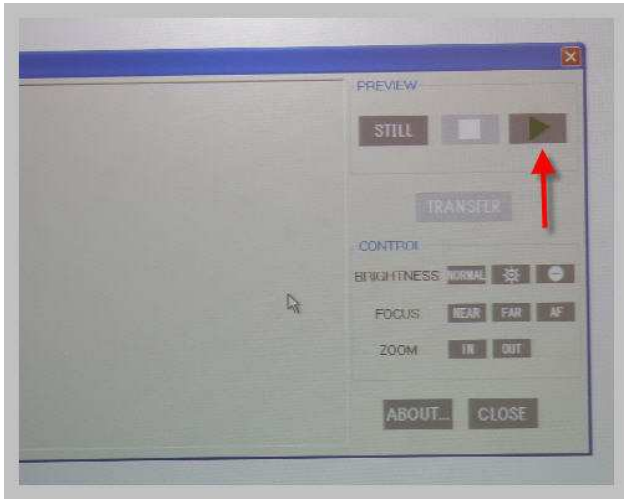
Second, tap on the scan button when you see ELMO TWAIN DS (VHO)



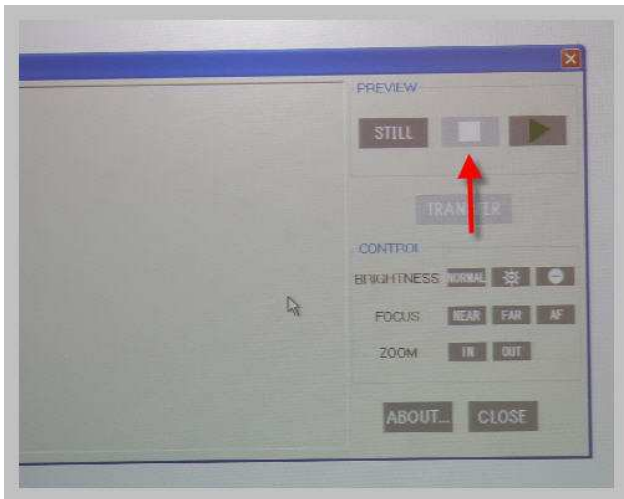
You will see this screen



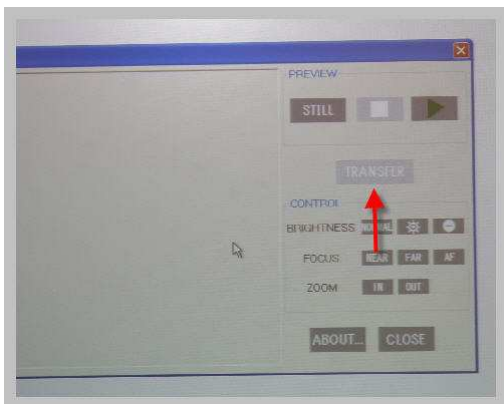
Tap on the GREEN ARROW (below) to bring up a live image from your ELMO document camera. You will be able to see and annotate on the image.



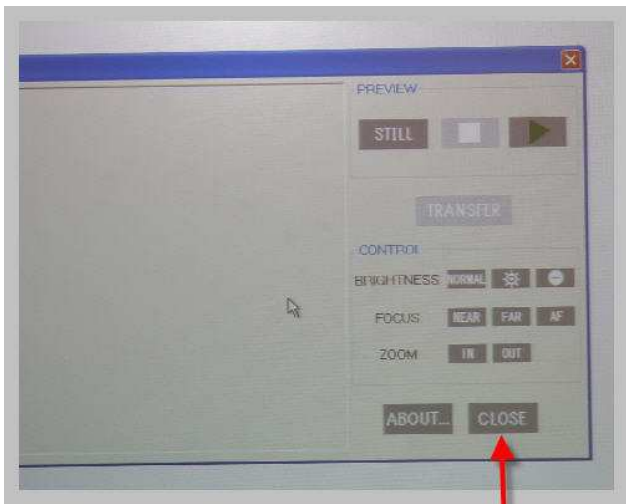
Tapping on the BOX (red arrow) will freeze the image



Tapping on the TRANSFER button will move the image to the Smart Notebook



Finally tap CLOSE and you will finish your work with the image that you are working on.



When you leave the Smart software you will be asked to save your work. Follow these instructions to get more images on to your Smartboard with your ELMO TT product.

If you have any questions after reading this please email me at the address below.