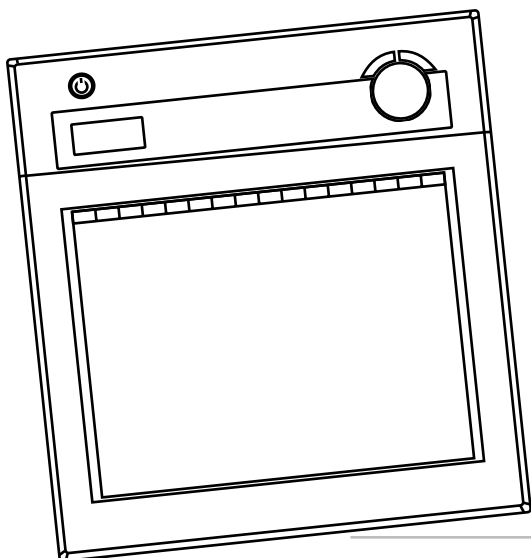


Touchboards

205 Westwood Ave, Long Branch, NJ 07740
Phone: 866-94 BOARDS (26273) / (732)-222-1511
Fax: (732)-222-7088 | E-mail: sales@touchboards.com

iMM Pad™

wireless interactive multimedia tablet



quick start guide

Recordex®

R&TTE Directive

We, the manufacturer hereby declare that this equipment, model RCK-T07, is in compliance with the essential requirements and other relevant provisions of Directive 1995/5/EC.

FEDERAL COMMUNICATIONS COMMISSION INTERFERENCE STATEMENT

This equipment has been tested and found to comply with the limits for a Class B digital device, pursuant to part 15 of the FCC Rules. These limits are designed to provide reasonable protection against harmful interference in a residential installation. This equipment generates, uses and can radiate radio frequency energy and, if not installed and used in accordance with the instructions, may cause harmful interference to radio communications. However, there is no guarantee that interference will not occur in a particular installation. If this equipment does cause harmful interference to radio or television receptions, which can be determined by turning the equipment off and on, the user is encouraged to try to correct the interference by one or more of the following measures: 1) Reorient or relocate the receiving antenna; 2) Increase the separation between the equipment and receiver; 3) Connect the equipment into an outlet on a circuit different from that to which the receiver is connected; 4) Consult the dealer or an experienced radio/TV technician for help.

CAUTION: Any changes or modifications not expressly approved by the grantee of this device could void the user's authority to operate the equipment.

RF Exposure Warning

This equipment complies with FCC RF exposure limits set forth for an uncontrolled environment. The equipment must not be co-located or operating in conjunction with any other antenna or transmitter.

Warranty

Product is warranted for use in North America. See last page of this guide for details.

Trademarks & Copyrights

Windows 2000, Windows XP, and Windows Vista are registered trademarks of Microsoft Corporation. MAC and MAC OSX are registered trademarks of Apple Inc.

This manual is the copyrighted product of Recordex USA, Inc. ©2009

Safety Precautions

PREVENT RISK OF ELECTRICAL SHOCK:

- Do not use near water.

PREVENT RISK OF PERSONAL INJURY OR EQUIPMENT DAMAGE:

- Do not place product on floor.
- Be careful of placement of USB Charging cable.
- Do not place objects on top of product or cables.
- Do not leave product in direct sunlight or direct heat source.
- Do not use in extremely high humidity environments.
- Do not attempt to disassemble the product.

DO NOT USE WITHIN 6 INCHES OF A PACEMAKER.

DISPOSE OF PRODUCT PROPERLY. DO NOT PLACE IN STANDARD MUNICIPAL WASTE.

USE THE CHARGING CABLE SUPPLIED WITH THE PRODUCT.

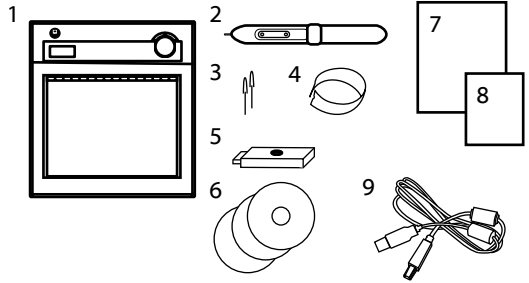
Congratulations

Thank you for selecting the Recordex iMMPad for your interactive multimedia presentations. We are certain you'll be pleased with your choice. We hope the next few pages will help you to quickly and easily begin using your new wireless interactive tablet.

Contents

Take a quick inventory of what you received in your box.

#	Description	Qty
1	iMMPad (2.4G RF)	x1
2	Stylus (pen)	x1
3	Replacement tips for pen	x2
4	Tool for removing pen tip	x1
5	USB RF Receiver Dongle (2.4G)	x1
6	Install Discs	x3
7	QuickStart Guide	x1
8	Multi-lingual Guide	x1
9	USB Recharging Cable	x1



NOTE: The pen requires a AAA battery which is not included in the box.

IMPORTANT – PLEASE READ BEFORE BEGINNING INSTALLATION!

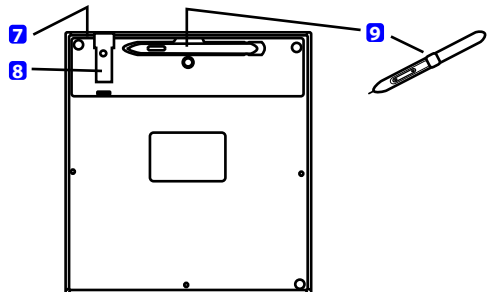
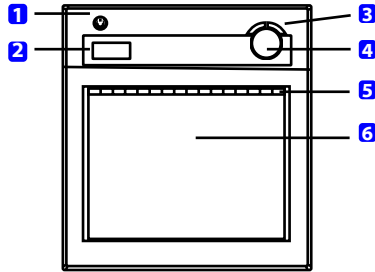


- Do not plug in the USB RF Receiver Dongle until after you have installed the tablet driver (page 4).

Getting To Know Your iMMPad

The diagrams below will quickly introduce you to the iMMPad functions and controls.

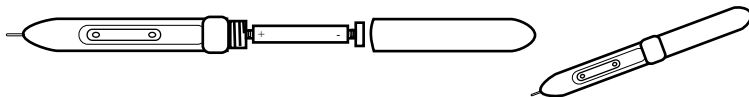
#	Description
1	Power Button (push for 3 seconds)
2	LCD Display (Status Indicators)
3	Page Up / Page Down Buttons (Scroll)
4	Volume Control (adjust computer vol.)
5	MacroKeys / Hot Spots (see page 6)
6	Active Area (6" x 8", 10" Diagonal)
7	USB Battery Charging Port
8	USB RF 2.4G Receiver Dongle
9	Pen/Stylus



Prepare Tablet For Use

Before using your iMMPad Wireless Tablet you will want to make sure the battery is charged and the pen battery has been installed.

- To charge your iMMPad simply plug the USB Charging Cable into the pad and any open USB port on your computer. The pad will require approximately two hours to ensure a full charge.
- To install the pen battery
 - Unscrew the pen and insert a AAA battery as indicated (note battery is not included).
 - Re-tighten the pen battery cap. Do not over-tighten.



Setup & Installation

Installing on Mac OS X (10.4+)

- Insert the "Tablet Driver – Mac" CD-ROM into your Apple Computer.
- Browse the disc and open the **Pen Pad Tablet Driver**.app to install the driver.
- After the driver is installed you can safely connect your iMMPad using the USB RF Receiver Dongle. (See Page 5 "Linking iMMPad to PC" for more details)

Installing on Windows XP/2000 (Vista users should skip to the next section)

- Insert the "Wireless Tablet" CD-ROM into your PC.
- Required Software
 - Click the button to start the **Macro Key Manager** Installation. The install wizard will guide you through the install process. The Tablet Driver will be installed with the Macro Key Manager software.
- Optional Software
 - Free Notes/Office Ink – Create notes, insert handwriting into Documents.
 - Power Presenter RE II – Full on-screen annotation.
- Restart your computer after installation.
- You can now safely connect your iMMPad using the USB RF Receiver Dongle. (See Page 5 "Linking iMMPad to PC" for more details)

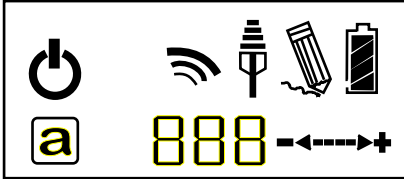
Installing on Windows Vista (32-bit and 64-bit)

- Insert the "Wireless Tablet" CD-ROM into your PC.
- Required Software
 - Click the button to start the **Macro Key Manager** Installation. The install wizard will guide you through the install process. The Tablet Driver will be installed with the Macro Key Manager software.
- Optional Software
 - Free Notes/Office Ink – *Not available on Vista. These functions are included in the Vista operating system as part of the Tablet PC system.*
 - Power Presenter RE II – *The Vista Version of Power Presenter is on the disc labeled "PowerPresenter RE II – Windows Vista Version" (the disc with the colorful pinwheel label).*
- Eject the "Wireless Tablet" CD-ROM and Insert the "PowerPresenter RE II" CD-ROM
 - Follow the installation wizard to install PowerPresenter.
- You can now safely connect your iMMPad using the USB RF Receiver Dongle. (See Page 5 "Linking iMMPad to PC" for more details)

Linking iMMPad to PC

- Upon first use the tablet will need to be synchronized with the USB RF Receiver. *NOTE: Make sure the MacroKey Manager software has been installed first.*
 - To link the tablet and receiver:
 - ✓ Power on the tablet (hold the power button for 3 seconds or more)
 - ✓ Press the round button on the USB Receiver (it will flash blue)
 - ✓ Press the red button on the back of the tablet
 - ✓ The pad's LCD display will now indicate the tablet is connected (the tablet will be assigned an ID number and this will be shown in the display, i.e. "001", and the signal tower icon will appear in the LCD display)

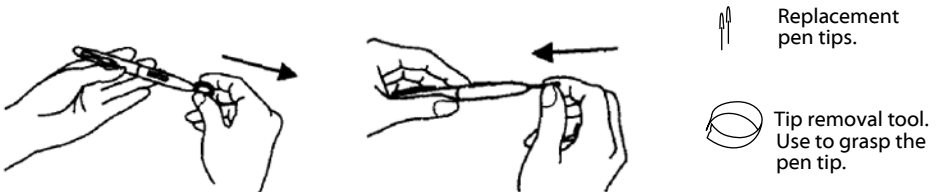
LCD Display Icons and Their Meaning



ICON	Description
	Power On. Indicates the pad is powered on.
	Link Successful. Indicates the RF Receiver has accepted the pad and issued a tablet ID number.
	Connection Status. Indicates successful connection to PC.
	Pen Status. Blinking indicates pen is hovering above tablet within the active area. Steady indicates pen tip is touching pad.
	Battery Indicator. Four levels of charge indicated.
	Active Tablet. When displayed the tablet is in active mode. Icon disappears when pad is in power saving mode.
	Tablet Number. Indicates the ID number assigned to the pad. Multiple pads can be connected to one USB RF Receiver.
	Volume Adjustment. Indicates direction of volume adjustment.

Replacing Pen Tip

If the pen tip is broken or worn down it can easily be replaced with a new tip using the "tip removal tool".



Using The Bundled Software

The user manuals for the bundled software are installed on your computer with the software. View and read the PDF manuals for instructions on using the applications.

Setting Up the Macro Keys (hot spots)

The MacroKey Manager provides an easy to use interface for setting the actions of each of the 16 programmable hot spots along the top of the iMMPad active area (see yellow shaded area in the image below).

The MacroKey Manager software is located under the Programs menu.

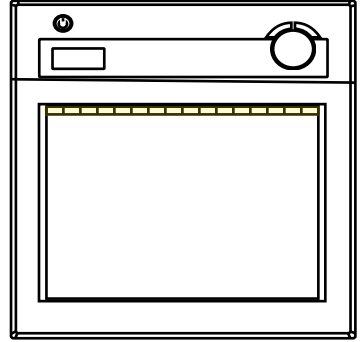
The MacroKey Manager can also be found in your system tray. The application icon will show 'grayed out' when the tablet is not linked to the PC, and will show 'white' when the tablet is connected.



Tablet not connected

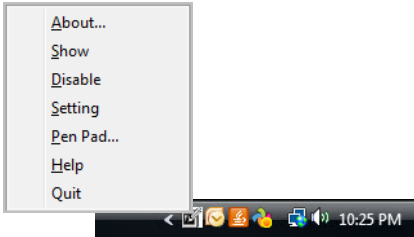


Tablet connected



There is a user's guide for the MacroKey Manager. To access the user's guide right click on the MacroKey icon in the system tray and select Help.

The 'right-click' menu also provides access to pen and tablet preference settings.



Show – Opens the MacroKey Manager Interface.

Disable/Enable – Disables/Enables the MacroKey function.

Setting – Set the MacroKey response time (I.e. How long the pen must be pressed on the hot spot before the macro is run).

Pen Pad – Options for controlling how the pen functions. Including options for controlling the pen buttons (right click/double click/single click).

Help – User's Guide.

Quit – Exit MacroKey Manager. Closes from system tray. Run the MacroKey Manager under Programs to restart the service.

Product Specifications

Wireless Technology	2.4Ghz RF (30' range)
Input Technology	Electromagnetic Induction
Active Area	10" Diagonal (6" x 8")
Resolution	2000 lines per inch
Report Rate	120 points per second
Pen Pressure	1024 levels
Macro Keys	16 Programmable Keys (hot spots)
Quick Buttons	Page Up/Page Down, Volume Control
LCD	TN LCD (17.7 x 40.9 mm)
LCD Icons	Battery Status (4 levels), Connection Mode, Connection Power Status, Volume Status, Tablet ID No.
Battery Type	Nokia LB5C Li-ion Rechargeable
Battery Capacity	800mA
Battery Charge Life	16 hours under continuous use 25 hours under typical use
Recharge Method	USB Cable (included)
Power Consumption	max 50mA (active operating mode)
Receiver Type	USB RF Receiver Dongle
Operating System	Windows 2000/XP/Vista/7; Mac OSX 10.4 and up
Pen Battery	1 x AAA Battery (not included)
Pen Dimensions	5" long, 0.54" diameter
Pen Proximity	0.4" above pad

Warranty One Year

Other

Box includes: 1 tablet, 1 pen, 2 replacement pen stylus tips, 1 pen tweezer (for removing tips), 1 manual, 2 Windows installation CDs, 1 MAC installation CD, 1 USB Receiver Dongle, 1 USB Charging Cable, 1 Li-ion Rechargeable battery (installed in tablet).
Onscreen annotation software (PowerPresenter II)

Minimum System Requirements

800Mhz Intel (or compatible) Processor
Available USB 2.0 Port
1GB System Memory
Microsoft Windows 2000/XP/Vista, MAC OSX 10.4+

Warranty

Limited 1-year Warranty on Tablet™ (“Tablet”)

What is my warranty? Recordex warrants to the original purchaser only that the Tablet will be free from defects in material and workmanship under normal use for a period of one (1) year from the date of original purchase. Recordex's warranty shall not apply: (i) to any Tablet subjected to accident, misuse, neglect, alteration, acts of God, improper handling, improper transport, improper storage, improper use or application, improper installation, improper testing or unauthorized repair; or (ii) to cosmetic problems or defects that result from normal wear and tear under ordinary use, and do not affect the performance or use of the product. If the Tablet develops a covered defect within the first year, Recordex will, at its option, either repair or replace the Tablet at no charge, provided that the Tablet is returned during the warranty period.

Exclusions. The replacement tips for the Tablet pen are not covered under this warranty. Two replacement tips are supplied with the Tablet. Additional tips may be purchased.

How long does this warranty last? One (1) year from the date of the original purchase.

Who is responsible for Shipping? You are responsible for shipping the Tablet to our Warranty Service Depot. Recordex will pay for return shipment of the repaired Tablet under warranty. Return shipment will be by ground service to the 48 contiguous US states. You are responsible for shipping to Alaska, Hawaii and any address outside of the United States. If the Tablet is repaired out of warranty then you are responsible for shipping both ways.

What must I do to obtain warranty service? To obtain warranty service please contact Recordex's Customer Service Center at 1-478-237-5501 or contact your authorized Recordex Dealer for assistance in filing a warranty claim. You will receive instructions on how to properly return your product for authorized warranty repair. In order to receive warranty service you must be able to provide an original receipt for the purchase of your Tablet.

THE ABOVE STATED WARRANTY IS EXCLUSIVE AND REPLACES ALL OTHER WARRANTIES EXPRESSED OR IMPLIED INCLUDING THOSE OF MERCHANTABILITY AND FITNESS FOR A PARTICULAR PURPOSE. RECORDEX WILL NOT BE HELD LIABLE FOR ANY OTHER DAMAGES OR LOSS INCLUDING INCIDENTAL OR CONSEQUENTIAL DAMAGES AND LOSS OF PROFITS OR REVENUES FROM WHATEVER CAUSE, INCLUDING BREACH OF WARRANTY OR NEGLIGENCE.

