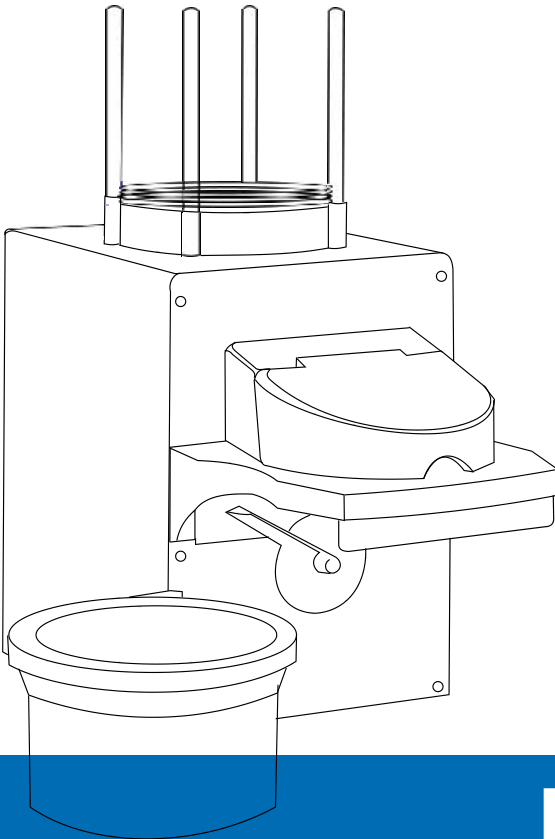


# Recordex RX-100<sup>PC</sup><sup>TM</sup>

DVD/CD AutoLoader Duplicator



# Keep the Packaging

Do I really need to keep the packaging? The box and foam used to package your RX-100™ for shipping is specially designed to prevent shipping damage. If your duplicator requires service during the warranty period and you don't have original packaging we will send you a replacement set but the cost for a replacement set is \$45.00. So we recommend hanging on to the original box & foam.

## Getting Service

What information do I need when I call for service? When calling for service we will need to know the serial number of your RX-100™, the date of purchase, and the name of the company that sold you your AutoLoader.

Where is my Serial Number? Your serial number is located on the outside of your AutoLoader box. You'll also find the Model number listed on the same label. We recommend writing the Serial number down in the inside cover of this quick start guide.

How to reach us? If after reading the user's manual you're still having trouble with your RX-100™ then give us a call or send us a message. Service Phone: 478-237-5501 Email: [support@recordexusa.com](mailto:support@recordexusa.com)

# Unpacking & Setting Up Your RX-100™

## STEP 1: Unbox and Verify Contents

Verify the contents of your package against the image below.

Save the box and packaging material for return shipment should your printer require service.

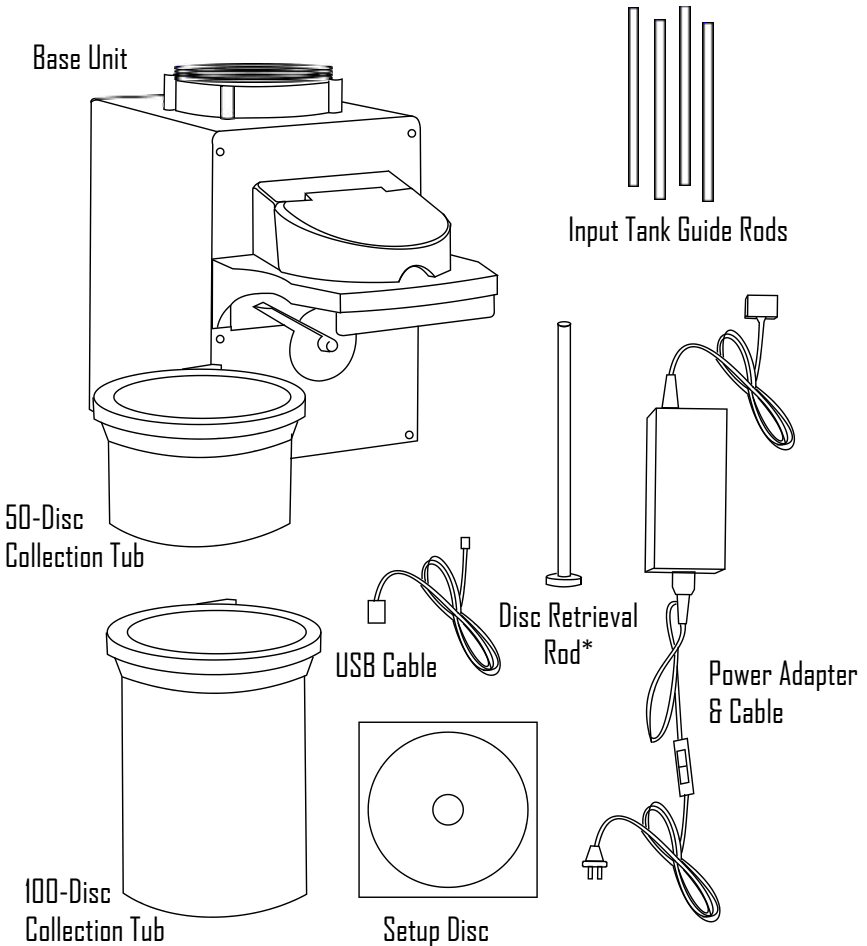
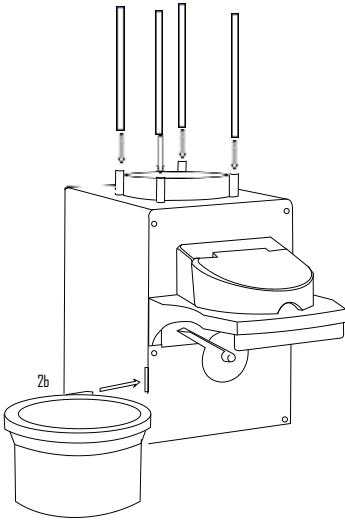


Figure 1.1 Package Contents

*\*Disc Retrieval Rod -- Use to retrieve discs from collection tub.*

## STEP 2: Assemble AutoLoader



STEP 2a: Insert the four Input Tank Guide Rods into the holes on the top of the base unit.

STEP 2b: Insert the 50 or 100-disc collection tub into the slot on the left side of the duplicator. NOTE: When using the 100-disc tub the tub will hang over the table edge.

Figure 2.1 Insert Input Tank Guide Rods

## STEP 3: Connect Power to RX-100

Plug end A into the rear of the base unit. Plug end B into a grounded 110V electrical outlet.

1. Connect the power cord to the power adapter.
2. Connect the power adapter to the RX-100PC.
3. Connect the power cord to the wall outlet.

NOTE: Use only a grounded outlet. It is highly recommended that you protect your autoloader from possible electrical damage by connecting it to a surge protector or an uninterruptible power supply (UPS).

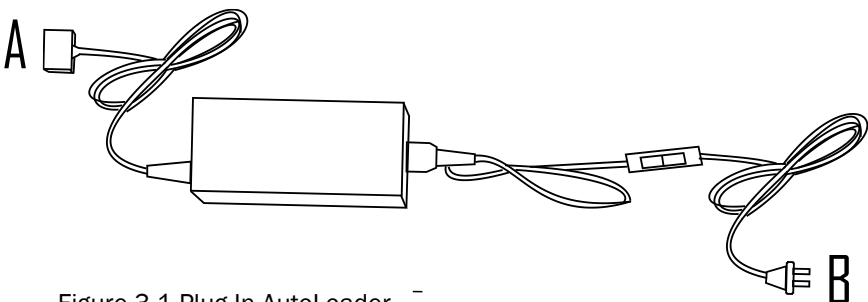


Figure 3.1 Plug In AutoLoader

**CAUTION: Do not connect the USB cable until after you have installed the device driver or your unit may not work properly.**

## STEP 4: Install Device Driver & Software

Insert the RX-100PC installation disc into your computer's disc drive. Auto-run should launch the installation menu.

*Note: If AutoRun is disabled on your computer then you will need to run the setup program manually. To do this open the disc contents using Windows Explorer and open the file named autorun.exe.*

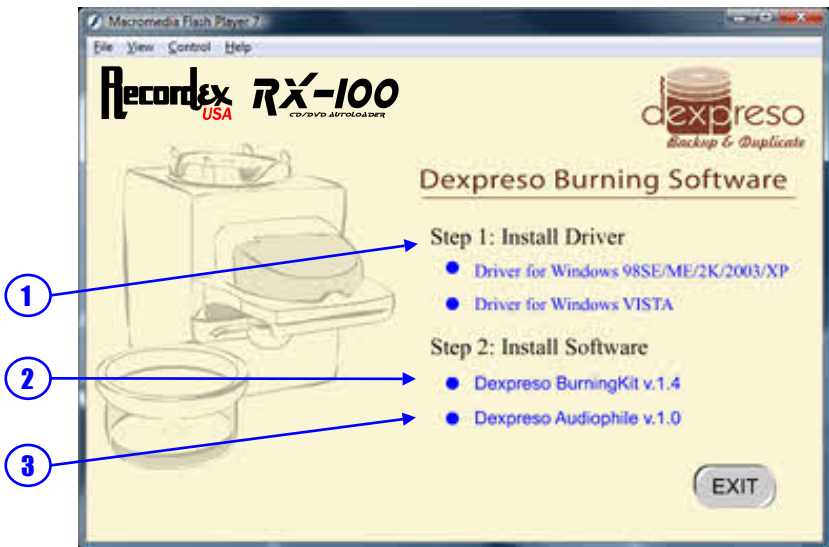


Figure 4.1 Installation Menu

- 1 Install the device driver for your RX-100PC™. This device driver works for both XP and Vista versions of Windows.
- 2 Next, install the Dexpresso BurningKit Software. Note, you will be asked to restart your computer after installing the BurningKit software, but we recommend that you wait to restart until after you've installed the AudioPhile Kit (step 3). Both software kits must be installed for the RX-100PC to function properly.
- 3 Finally, install the Dexpresso AudioPhile software. This time please restart your computer after completing installation.

## STEP 5: Connect Your RX-100PC to your Computer

Connect the small end of the supplied USB cable to the back of the RX-100PC and connect the other end to an open USB port on your computer.

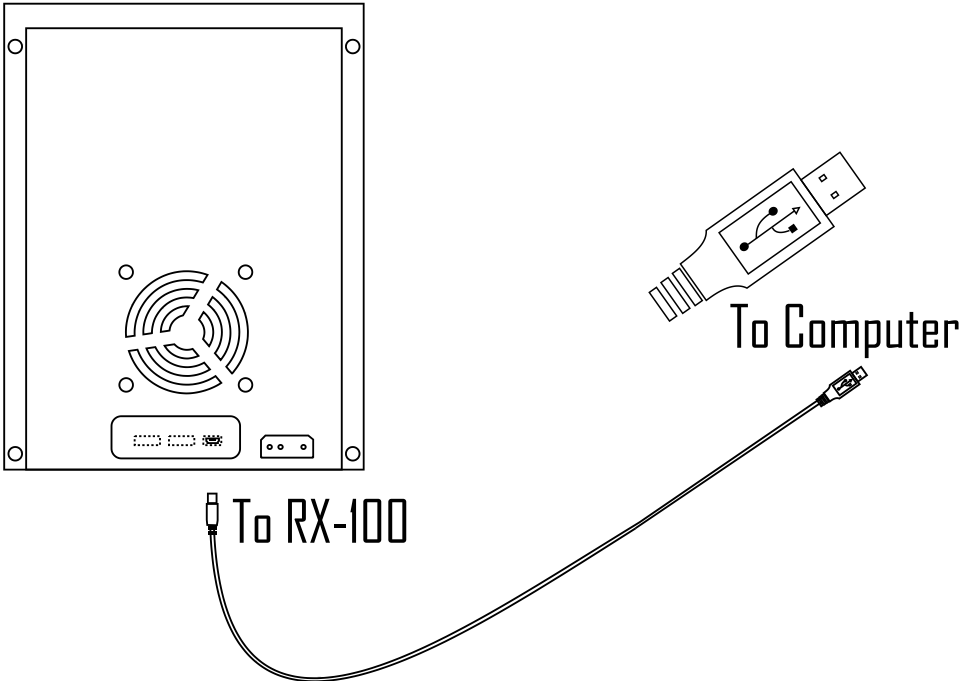


Figure 5.1 Connecting USB Cable

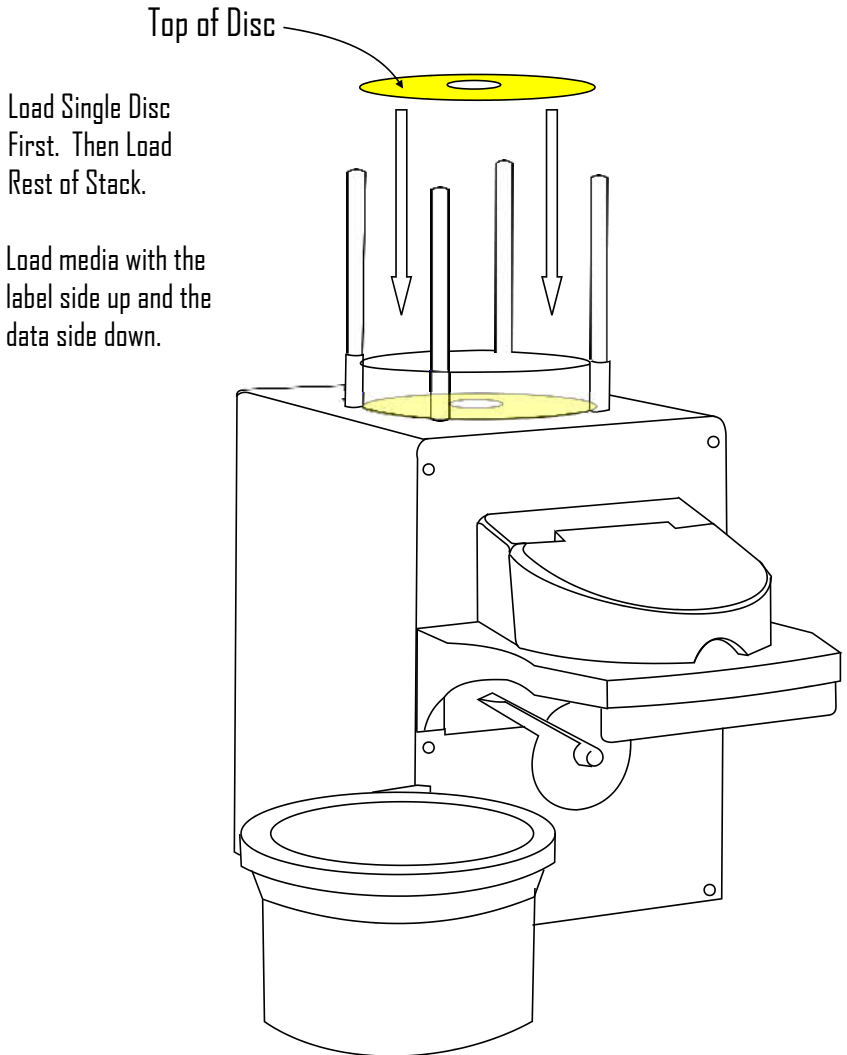
After you connect the USB cable you can power on your RX-100 and Windows should report that it has found new hardware, and that it is ready to use.

Use the on/off switch on the power adapter cable to power your RX-100™ on and off.

## STEP 6: Load Blank Media Into The Input Tank

To fill the input tank start by placing a single disc into the input tank. This will give you a solid base to place the remainder of the blank or re-writable disc stack.

The input tank can hold 50 or 100 discs depending on which input tank guide rods are installed.



# Using The Dexpreso Software

Your RX-100PC is bundled with a powerful yet easy to use suite of duplication software. The Dexpreso BurningKit automates all the essential data duplication tasks and the Dexpreso AudioPhile software automates music duplication tasks. This software was designed for ease of use and each task is broken down into simple steps. You won't need to read a manual to figure out how to use this software. Simply follow the on-screen instructions for each step.

The following is a listing and brief description of each task that can be performed with the Dexpreso software.

## Tasks Automated by Dexpreso BurningKit Software:

**Burn Data:** Burn data you've selected from your computer's hard drive to disc in just three easy steps. Burn one copy or up to a 100 copies!

**Copy Disc:** Create copies of your CDs or DVDs. Place the disc you want to copy in the input tank followed by the number of blank discs you want to duplicate and click Copy! If you want to copy multiple sets of discs just load them all at once and let the autoloader cycle through multiple jobs. NOTE: This function works with Data and Video Discs only. The software will not make disc to disc copies of audio CDs. *(to copy a CD you must rip to the computer first (Rip Audio) and then use the Burn Audio CD function. Rip Audio and Burn Audio CD functions are found in the AudioPhile Software.*

**Grab Disc Image:** Create backups of your CDs and DVDs with this feature. Just place the discs in the input tank and name the images. This is an easy way to store backup copies of important discs on you computer hard drive.

**Burn Disc Image:** Restore disc images (see grab disc image) by burning them back onto an optical disc. Just select the image you want to burn and the number of copies you want to make.

**Erase Rewritable Disc:** Simply and easily erase data on rewritable discs. Just load them in the input tank and click Erase.

**Test Disc:** Test discs to determine if they are CD or DVD discs, or if they are blank. Simply load media and click test.

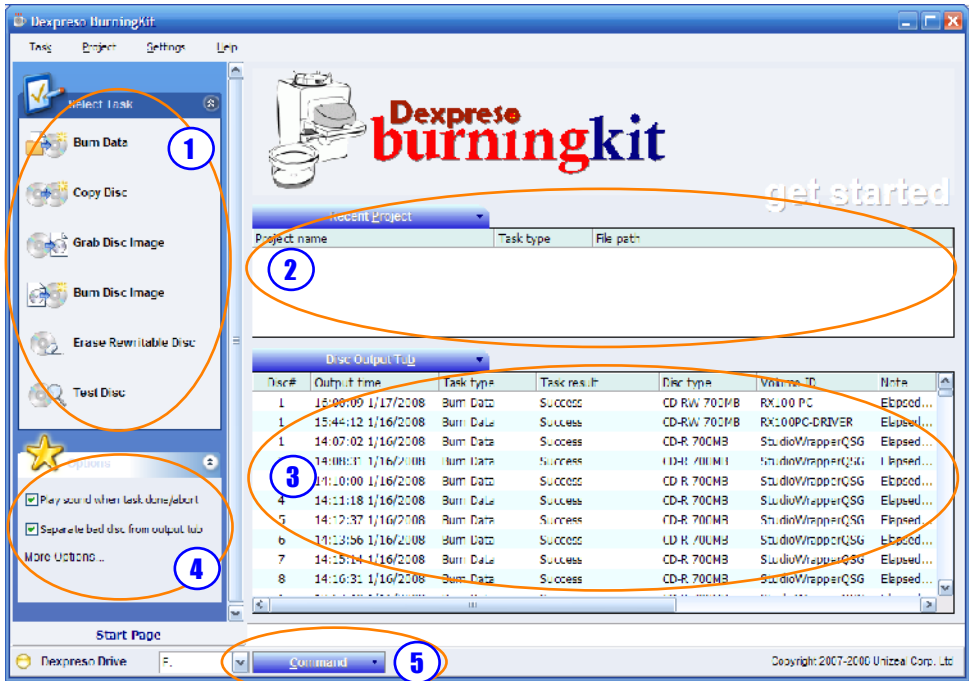
## Tasks Automated by Dexpreso AudioPhile Software:

**Burn Audio CD:** Create an Audio CD that is compatible with standard CD Players. Simply name the disc, add the audio tracks you want to burn and click burn. Burn one to 100 copies.

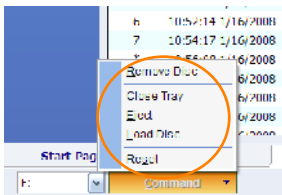
**Rip Audio:** Automatically rip up to 100 CDs to MP3! This makes loading your MP3 player easier than ever. Just place the disc in the input bin assign it a label and click Rip!

**Erase CD-RWs:** Erase Rewritable discs so you can use them to burn more CDs. Erase one or up to 100 discs with automated disc loader.





- ① Select Task Pane. Click on a task to launch the Task Wizard.
- ② Recent Projects. List of recently saved “burn image” projects.
- ③ Disc Output Tab. Log of previously processed discs.
- ④ Options. Click to set configuration options.
- ⑤ Command. Send commands to the RX-100PC (see below).



# Common Problems

**SYMPTOM:** Discs do not load properly.

**PROBLEM:** AutoLoader is Not Level.

**SOLUTION:** Make sure the surface your autoloader is resting on is level. If necessary use a bubble level to make sure the surface is level both front to back and side to side.

**SYMPTOM:** Software Locks Up After Disc Is Loaded

**PROBLEM:** The Dexpreso Command software was not installed properly.

**SOLUTION:** Insert the Installation Disc and reinstall the AudioPhile Software. This will reinstall the Command software.

## Specifications

Model	Recordex RX-100PC™ Autoloading Duplicator
Disc Capacity	50 and 100 Disc Capacity
Copy Technology	PC Attached Software Facilitated Duplication
Copy Speeds	Up to 20x DVD-R & 48X CD-R
Burner Specs	20X DVDRW Burner
Media Type	Standard 12cm DVD & CD Media
Formats Supported	CD-R/CD-RW, DVD-R/DVD-RW, DVD+R/DVD+RW(Single Layer), DVD+R DL/DVD-R DL (Dual Layer), DVD-RAM

### Minimum System Requirements

Operation System: Microsoft Windows 2000 / XP / VISTA

CPU: Pentium IV 1.2Ghz (Minimum) / Pentium V 1.6Ghz (Recommended)

Memory: 256 MB RAM (Minimum) / 1 GB (Recommended)

Free disc space: 800 MB for CD / 10 GB for DVD

### Physical Dimensions & Specifications

Dimensions & Weight 9.84" (W) x 13.98" (D) x 11.81" (H), 8.8 pounds

Power Voltage 100-240VAC (Universal Power Supply)

Power Frequency 50-60 Hz

Certifications UL, CE, FCC

### Warranty & Service

Warranty One Year Parts & Labor and Free Technical Support

### Package Contents

RX-100PC™ Autoloader, 50 Disc & 100 Disc Input Tank Guide Rods, 50 Disc & 100 Disc Collection Tubs, Tub Holding Arm, USB Cable, Power Supply & Cord, Disc Removal Tool, QuickStart Guide, and Installation Disc (Includes Dexpreso BurningKit & AudioPhile Software).

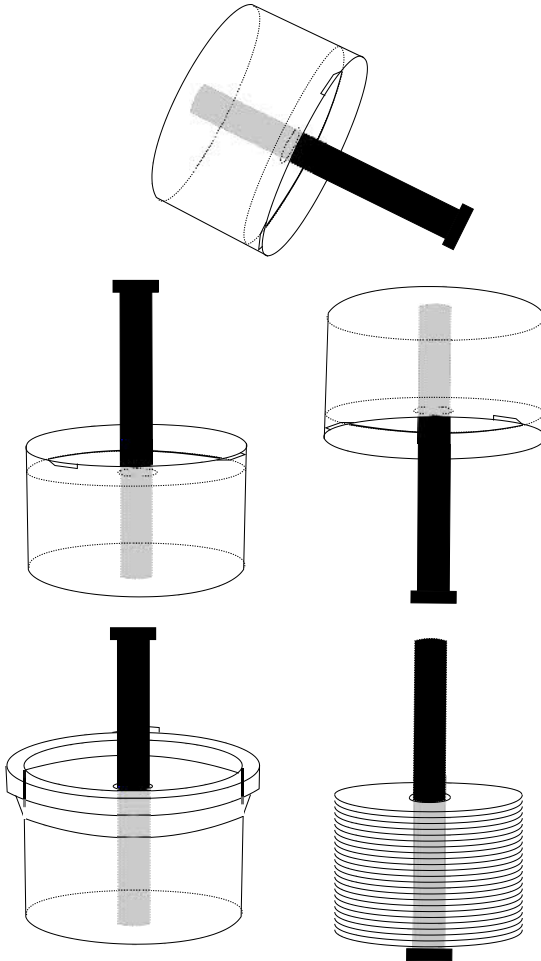
## Tips & Hints

### Loading the Input Tank With Discs

Load a single disc first then add the remainder of the stack. This is much easier than trying to load the whole stack in one step.

### Unloading Discs from the Output Tub

Included with your RX-100 is a handy little tool for removing discs from the output tub. Insert the disc removal tool into the stack of completed discs and then turn the output tub over. Your discs will be neatly stacked on the removal tool and you can now move them to a cakebox or wherever you plan to store them.



# Warranty

## Limited 1-year Warranty on Recordex RX-100PC™ AutoLoading Duplicator

**What is my warranty?** Recordex warrants to the original purchaser only that the CD/DVD autoloader will be free from defects in material and workmanship under normal use for a period of one (1) year from the date of original purchase. However, Recordex does not warrant against failures related to poor quality media. Recordex's warranty shall not apply: (i) to any autoloader subjected to accident, misuse, neglect, alteration, acts of God, improper handling, improper transport, improper storage, improper use or application, improper installation, improper testing or unauthorized repair; or (ii) to cosmetic problems or defects that result from normal wear and tear under ordinary use, and do not affect the performance or use of the product. If the autoloader develops a covered defect within the first year, Recordex will, at its option, either repair or replace the autoloader at no charge, provided that the autoloader is returned during the warranty period.

**How long does this warranty last?** One (1) year from the date of the original purchase.

**What must I do to obtain warranty service?** To obtain warranty service please contact Recordex's Customer Service Center at 1-478-237-5501 or contact your authorized Recordex Dealer for assistance in filing a warranty claim. You will receive instructions on how to properly return your product for authorized warranty repair. In order to receive warranty service you must be able to provide an original receipt for the purchase of your autoloader.

THE ABOVE STATED WARRANTY IS EXCLUSIVE AND REPLACES ALL OTHER WARRANTIES EXPRESSED OR IMPLIED INCLUDING THOSE OF MERCHANTABILITY AND FITNESS FOR A PARTICULAR PURPOSE. RECORDEX WILL NOT BE HELD LIABLE FOR ANY OTHER DAMAGES OR LOSS INCLUDING INCIDENTAL OR CONSEQUENTIAL DAMAGES AND LOSS OF PROFITS OR REVENUES FROM WHATEVER CAUSE, INCLUDING BREACH OF WARRANTY OR NEGLIGENCE.

