

# Wall Mounts

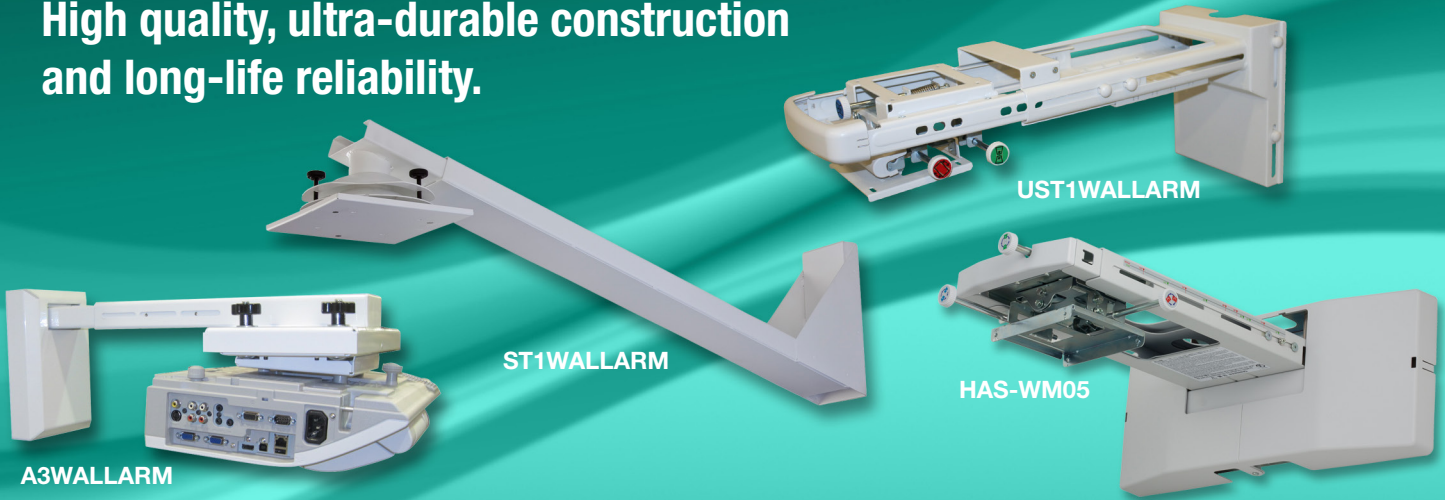
Compatible with select Hitachi projectors



205 Westwood Ave, Long Branch, NJ 07740  
 Phone: 866-94 BOARDS (26273) / (732)-222-1511  
 Fax: (732)-222-7088 | E-mail: sales@touchboards.com

**HITACHI**  
 Inspire the Next

High quality, ultra-durable construction and long-life reliability.



Specifications	HAS-WM05	A3WALLARM	UST1WALLARM	ST1WALLARM
<b>Swivel</b>	+/- 5.0°	+/- 2.0°	+/- 3.0°	360°
<b>Pitch</b>	+/- 5.0°	+/- 4.7°	+/- 3.0°	+/- 12°
<b>Roll</b>	+/- 5.0°	+/- 5.0°	+/- 3.0°	+/- 12°
<b>Arm Length</b> (From the wall to the center of VESA 100/200)	12.5" - 24.5"	10.7" - 24.0"	9.8" - 21.4"	34.6" - 52.7"
<b>Weight Capacity</b>	23.4 lbs.	40 lbs.	22.1 lbs.	35 lbs.
<b>Height Adjustment</b>	+/- 1.4"	+/- 0.7"	+/- 1.2"	6.3" (when fully extended)
<b>Left/Right Position Adjustment</b>	+/- 2.0"	+/- 0.9"	+/- 0.9"	1.0"
<b>Dimensions (WxHxD)</b>	19.8" x 8.1" x 20.3"	10.8" x 8.9" x 28.0"	7.6" x 9.8" x 17.3"	8.3" x 11.8" x 37"
<b>Weight</b>	14.1 lbs.	22 lbs.	10.6 lbs.	17 lbs.
<b>Cable Management</b>	Yes	Yes	Yes	Yes

## Hitachi Projector Compatibility

HAS-WM05	A3WALLARM	UST1WALLARM	ST1WALLARM
CP-AX2503, CP-AX3503 CP-AW2503, CP-AW3003 CP-TW2503, CP-TW3003 CP-AX2505, CP-AX3505 CP-AW2505, CP-AW3005 CP-TW2505, CP-TW3005	CP-A220N, CP-A221N CP-A222WN, CP-AW250N CP-AW251N, CP-AW252WN CP-A300N, CP-A301N CP-A302WN, iPJ-AW250N CP-AW2519N, BZ-1 CP-AX2503, CP-AX3503 CP-AW2503, CP-AW3003 CP-TW2503, CP-TW3003 CP-AX2505, CP-AX3505 CP-AW2505, CP-AW3005 CP-TW2505, CP-TW3005	CP-A220N, CP-A221N CP-A222WN, CP-AW250N CP-AW251N, CP-AW252WN CP-A300N, CP-A301N CP-A302WN, iPJ-AW250N CP-AW2519N, BZ-1	CP-D31N CP-DW10N CP-D32WN CP-BW301WN CP-BX301WN

HIO314-7/16-Rev. 4  
 All specifications subject to change without notice.  
 ©2016 Hitachi America, Ltd. All Rights Reserved.

### Hitachi America, Ltd.

Toll Free: 1.800.HITACHI • Email: dmd.info@hal.hitachi.com  
 Web: hitachi-america.us/projectors • Blog: dmd.hitachi-america.us/blog



# Adapters

Used to replace older Hitachi models with newer Hitachi models, as well as competitive models to Hitachi models.

**HITACHI**  
Inspire the Next



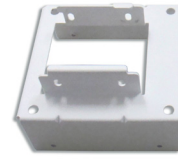
CPA100ADAPTPLATE



CPA100ADPA7



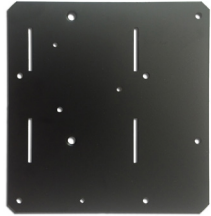
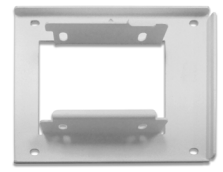
ADAPA3A7WPLATE



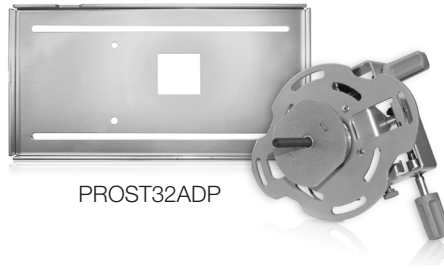
HASWB01



HASWB02



ST1PLATE2



PROST32ADP



MITST32ADJ

Adapter Name	For	From	To
CPA100ADAPTPLATE	A100WALLARM A100WALLARM2	CP-A100, CP-A200, CP-A52, ED-A100	CP-AW2503, CP-AW3003 CP-TW2503, CP-TW3003 CP-AW2505, CP-AW3005 CP-TW2505, CP-TW3005
CPA100ADPA7	A100WALLARM A100WALLARM2	CP-A100, CP-A200, CP-A52, ED-A100	CP-AX2503, CP-AX3503 CP-AX2505, CP-AX3505
ADAPA3A7XPLATE	A3WALLARM	CP-A220N, CP-A221N, CP-A222WN, CP-A300N, CP-A301N, CP-A302WN	CP-AX2503, CP-AX3503 CP-AX2505, CP-AX3505
ADAPA3A7WPLATE	A3WALLARM	CP-AW250N, CP-AW251N, CP-AW252WN, iPJ-AW250N, CP-AW2519N, BZ-1	CP-AW2503, CP-AW3003 CP-TW2503, CP-TW3003 CP-AW2505, CP-AW3005 CP-TW2505, CP-TW3005
HAS-WB01	AW250NWALLARM (HAS-K250) UST1WALLARM (HAS-K252)	CP-A220N, CP-A221N, CP-A222WN, CP-A300N, CP-A301N, CP-A302W	CP-AX2503, CP-AX3503 CP-AX2505, CP-AX3505
HAS-WB02	AW250NWALLARM (HAS-K250) UST1WALLARM (HAS-K252)	CP-AW250N, CP-AW251N, CP-AW252WN, iPJ-AW250N, CP-AW2519N, BZ-1	CP-AW2503, CP-AW3003 CP-TW2503, CP-TW3003 CP-AW2505, CP-AW3005 CP-TW2505, CP-TW3005
ST1PLATE2	Smart Wall Arm Mount	Smart UF55 Smart UF65	CP-D32WN CP-BW301WN, CP-BX301WN,
PROST32ADP	Promethean Wall Arm Mount	Promethean PRM10 Promethean PRM20 Promethean PRM30 Promethean PRM35 Promethean PRM45	CP-D32WN, CP-BW301WN, CP-BX301WN
MITST32ADJ	Mitsubishi MITS PRO EST Wall Arm Mount	WD380U-EST	CP-D32WN, CP-BW301WN, CP-BX301WN

HI0314-7/16-Rev. 4  
All specifications subject to change without notice.  
©2016 Hitachi America, Ltd. All Rights Reserved.

**Touchboards**

205 Westwood Ave, Long Branch, NJ 07740  
Phone: 866-94 BOARDS (26273) / (732)-222-1511  
Fax: (732)-222-7088 | E-mail: sales@touchboards.com

**Hitachi America, Ltd.**

Toll Free: 1.800.HITACHI • Email: dmd.info@hal.hitachi.com  
Web: hitachi-america.us/projectors • Blog: dmd.hitachi-america.us/blog

