



The World's Fastest Wireless Transmission Projectors

Easy wireless projection (PT-LB60NTU)

- World's fastest data transfer*¹
- Wireless PC motion/sound streaming*²
- Abundant wireless functions, including secondary display transmission and 16-window index style
- Simple, user-friendly settings



There are no cables to connect, so projector setup is quick and easy, and you have full layout flexibility. Wireless Manager ME 3.0 software (provided) increases transmission speed by five times compared to our previous model*⁶. You get fast, smooth, stress-free transmission even with large video files*². You can copy Wireless Manager to a memory card and take it with you on a trip. This lets you enjoy wireless transmission even at presentation sites where the computer doesn't have the software*⁷.

Daylight View 2 technology

- Looks max. 50% brighter*³
- Vivid colors in a bright room
- Auto operation with ambient light sensor (ALS)



High power and portability

- Bright 3,200 lumens
- Ultra-lightweight: 5.5 lbs/5.7 lbs (2.5 kg/2.6 kg)*⁴
- Slim and compact design: 2-15/16" (75-mm) thickness*⁵

Quick operation

- 2-second speed start
- Auto search
- Real-time keystone correction
- Operation assistance
- Direct power off

*¹ As of February 7, 2006, according to our own evaluation of wireless transmission from PC to projector. Wireless projection function is featured on the PT-LB60NTU only.

*² Content and DVDs set with DRM (Digital Rights Management) cannot be transmitted.

*³ Comparison with Daylight View 2 turned On and Off, using an 80-inch screen and ordinary meeting room lighting of 400 lux. (Projector: PT-LB60NTU, screen gain: 2.6)

*⁴ 5.5 lbs/2.5 kg for the PT-LB60U; 5.7 lbs/2.6 kg for the PT-LB60NTU.

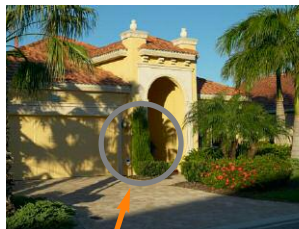
*⁵ Legs and protrusions not included.

*⁶ PT-LB20NTU

*⁷ Transmission will be slower than transmission with a computer that has the software installed. Also, certain functions may not be available.

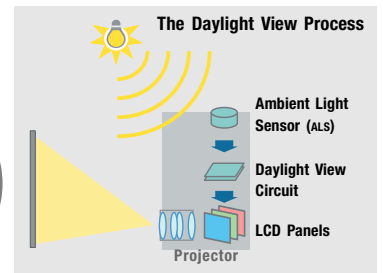
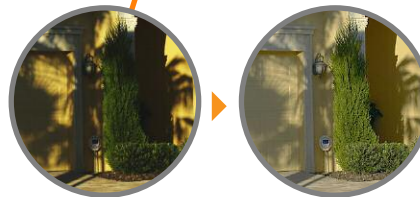
*⁸ With Wireless Manager ME 3.0, you can use the projector screen as a secondary monitor for the PC. In this setup, Microsoft® PowerPoint® must be set to "Show Presenter View."

Wireless Prompter (Secondary Display) Function
This allows transmission of content other than what's displayed on your PC. For example, you can display text documents on your PC screen while projecting slide from your Microsoft® PowerPoint® presentation*⁸. You get a host of other convenient wireless transmission functions too, such as area-specified transmission and a multi-live mode for simultaneous display of up to 16 PCs.



Daylight View 2

A built-in sensor measures the ambient light, and the halftone colors and brightness level are adjusted accordingly in real time. Viewing brightness is increased up to 150%*³.



Rear View



Specifications

Power supply	100–240 V AC, 50/60 Hz	Installation	Front/rear ceiling/desk (menu selection)	Remote Control Unit	
Power consumption	300 W (Approx. 2 W in standby mode with fan stopped)	Built-in speakers	1-9/16" x 1-3/16" (4 x 3 cm) x 1 (oval), 1.0 W (monaural) output power	Power supply	3 V DC (button battery x 1)
LCD panel	4:3 aspect ratio, micro lens array	Terminals		Operation range**	Approx. 7 m (23 feet) when operated from directly in front of the signal receptor
Panel size	0.8" (20.32 mm) diagonal	PC 1 IN	D-sub HD 15-pin x 1	Dimensions (W x H x D)	52 x 123 x 21 mm (2-1/16" x 4-27/32" x 13/16")
Display method	Transparent LCD panel (x 3, R/G/B)	RGB signal	R, G, B: 0.7 Vp-p, 75 ohms, Sync on green: 1.0 Vp-p, 75 ohms HD/SYNC, VD: TTL (positive/negative polarity compatible)	Weight	74 g (2.6 ozs.) (including batteries)
Drive method	Active matrix	PC 2 IN/PC 1 OUT	D-sub HD 15-pin x 1 (input/output selectable using on-screen menu)	Wireless LAN (PT-LB60NTU)	
Pixels	786,432 (1,024 x 768) x 3, total of 2,359,296 pixels	RGB signal	R, G, B: 0.7 Vp-p, 75 ohms, Sync on green: 1.0 Vp-p, 75 ohms HD/SYNC, VD: TTL (positive/negative polarity compatible)	Standard	IEEE802.11b/g
Pixel configuration	Stripe	YPbPr signal	Y: 1.0 Vp-p (including sync signal), 75 ohms; Pb, Pr: 0.7 Vp-p, 75 ohms	Modulation	
Lens	Manual zoom (1.1–1.2), manual focus, F 1.7–1.8, f 24.0–28.8 mm	PC 2 IN/PC 1 OUT	D-sub HD 15-pin x 1 (input/output selectable using on-screen menu)	IEEE802.11b	Direct sequence spread spectrum (DS-SS) system
Lamp	220 W UHM™ lamp	RGB signal	R, G, B: 0.7 Vp-p, 75 ohms, Sync on green: 1.0 Vp-p, 75 ohms HD/SYNC, VD: TTL (positive/negative polarity compatible)	IEEE802.11g	Orthogonal frequency division multiplex (OFDM) system
Colors	Full color (16,777,216 colors)	YPbPr signal	Y: 1.0 Vp-p (including sync signal), 75 ohms; Pb, Pr: 0.7 Vp-p, 75 ohms	Transmission system	
Brightness	3,200 lumens	VIDEO IN	RCA pin x 1, 1.0 Vp-p, 75 ohms	IEEE802.11b	CCK (11/5.5 Mbps), DQPSK (2 Mbps), DBPSK (1 Mbps)
Uniformity	90%	S-VIDEO IN	Mini DIN 4-pin x 1	IEEE802.11g	64-QAM (54/48 Mbps), 16-QAM (36/24 Mbps), QPSK (18/12 Mbps), BPSK (9/6 Mbps)
Contrast	400:1*1 (full on/full off)	AUDIO IN	RCA (L, R) x 1, 0.5 Vrms (for VIDEO/S-VIDEO)	Transmission speed	
Scanning frequency		PC 1 AUDIO IN	M3 (L, R) x 1, 0.5 Vrms	IEEE 802.11b	11 Mbps, 5.5 Mbps, 2 Mbps, 1 Mbps
RGB	Horizontal: 15–91 kHz, Vertical: 50–85 Hz	PC 2 AUDIO IN	M3 (L, R) x 1, 0.5 Vrms	IEEE 802.11g	54 Mbps, 48 Mbps, 36 Mbps, 24 Mbps, 18 Mbps, 12 Mbps, 9 Mbps, 6 Mbps
YPbPr	480i (525i): fh 15.75 kHz; fv 60 Hz 576i (625i): fh 15.63 kHz; fv 50 Hz 480p (525p): fh 31.25 kHz; fv 60 Hz 576p (625p): fh 31.25 kHz; fv 50 Hz 720p (750p): fh 45 kHz; fv 60 Hz 1080i (1125i): fh 33.75 kHz; fv 60 Hz 1080i (1125i): fh 28.125 kHz; fv 50 Hz	AUDIO OUT	M3 (L, R) x 1, 0–2.0 Vrms (variable)	Operation range**	Approx. 30 m (98'5")
S-Video/Video	NTSC, NTSC4.43, PAL-M, PAL60: fh 15.75 kHz; fv 60 Hz PAL, SECAM, PAL-N: fh 15.63 kHz; fv 50 Hz	SERIAL	Mini DIN 8-pin x 1 (RS-232C)	Frequency range	2,412 MHz–2,462 MHz
Projection size	33–300 inches/838–7,620 mm diagonally	Power cord length	2 m (6'7")	Channels	1–11 ch
Throw distance	37"–35"5" (1.1 m–10.8 m)	Cabinet material	Moulded material (ABS/PC)	Supplied Accessories	
Optical axis shift	6:1 (fixed)	Dimensions (W x H x D)	12-27/32" x 2-15/16" x 9-5/32" (327 x 75 x 233 mm)	<ul style="list-style-type: none"> Power cord Wireless remote control Batteries for remote control VGA cable Lens cover Carrying bag Wireless Manager ME 3.0 (CD-ROM)*3 	
Keystone correction range	Vertical: ±30°	Weight		Optional Accessories	
On-screen menu	17 languages: English, French, German, Spanish, Italian, Korean, Russian, Chinese, Japanese, Swedish, Norwegian, Danish, Portuguese, Polish, Hungarian, Czech, and Thai	PT-LB60NTU	5.7 lbs. (2.6 kg)	ET-LAB30 Replacement lamp unit	
		PT-LB60U	5.5 lbs. (2.5 kg)	ET-PKB30 Ceiling mount bracket	
		Operating environment		ET-RM300 Full-function wireless remote control	
		Temperature	0°–40°C (32°–104°F)	ET-ADSER Serial adapter (DIN 8-pin/D-sub 9-pin)	
		Humidity	20%–80% (no condensation)		

*1: In AI mode.

*2: Operation range differs depending on the environment.

*3: For the PT-LB60NTU only.

NOTES ON USE

- The projector uses a high-voltage mercury lamp that contains high internal pressure. This lamp may break, emitting a large sound, or fail to illuminate, due to impact or extended use. The length of time that it takes for the lamp to break or fail to illuminate varies greatly depending on individual lamp characteristics and usage conditions.
- The brightness of the lamp will gradually decrease with use.
- The lamp, LCD panel, polarizing plate, and polarizing beam splitter (PBS) are consumable parts. These parts may need to be replaced during the guarantee period if the projector is used for six or more hours per day.
- The replacement cycle of the LCD panel, polarizing plate, and polarizing beam splitter (PBS) will be shortened if the projector is subjected to continuous use for six or more hours. Likewise, the replacement cycle of the lamp will be shortened if the power is frequently turned on and off or the projector is subjected to continuous use for 10 or more hours.
- Interruptions may occur in the wireless connection due to signal interference or PC conditions.

To use wireless functions, a PC is required that meets the conditions given below:

OS:	Microsoft® Windows® 2000 Professional, Windows® XP Professional, Windows® XP Home Edition
CPU:	Pentium® III or higher, or other compatible processor (1 GHz or higher is recommended).
Memory:	256 MB or more
Free hard disk space:	60 MB or more
CD-ROM drive:	CD-ROM drive or DVD drive
Wireless LAN:	IEEE 802.11b/g compatible (built-in wireless LAN system or external IEEE 802.11b/g LAN card must be installed and running normally.) However, some IEEE 802.11g/b wireless LAN may not allow connection to the projector.
Web browser:	Internet Explorer 6.0 or later, Netscape Communicator 7.0 or later
Direct X:	DirectX® 8.1b or later must be installed.

Operation is not guaranteed for all computers that meet the above conditions

Panasonic

Touchboards

205 Westwood Ave, Long Branch, NJ 07740

Phone: 866-94 BOARDS (26273) / (732)-222-1511

Fax: (732)-222-7088 | E-mail: sales@touchboards.com



Weights and dimensions shown are approximate. Specifications are subject to change without notice. Product availability differs depending on region and country. This product may be subject to export control regulations. UHM is a trademark of Matsushita Electric Industrial Co., Ltd. VGA and XGA are trademarks of International Business Machines Corporation. Windows and PowerPoint are either registered trademarks or trademarks of Microsoft Corporation in the United States and/or other countries. All other trademarks are the property of their respective trademark owners. Projection images simulated.

PT-LB60NTU-06APR Printed in Japan.