

StarBoard FX/FX-DUO Wireless Connection Setup Manual (Windows XP SP2)

1. Preface

To establish the wireless connection between StarBoard FX/FX-DUO and the PC, the following devices are necessary:

Wireless USB Device Server: Silex technology SX-2000WG+
USB2.0 WiFi Adapter: Planex GW-US54GXS

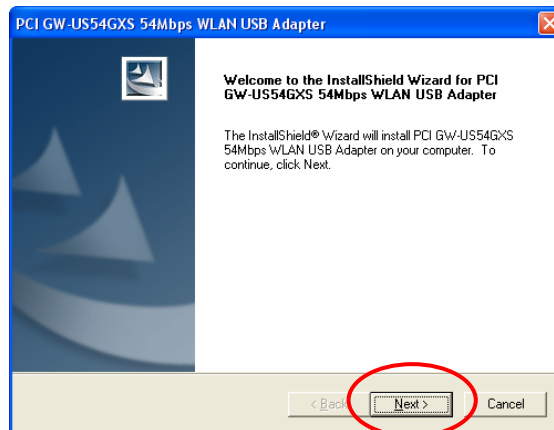
StarBoard Software 8.0/B or higher is necessary prior to setup of the wireless connection. Make sure to select "**FX/FX-DUO**" in the **Board Type** screen during the installation of StarBoard Software.

Installation of GW-US54GXS driver

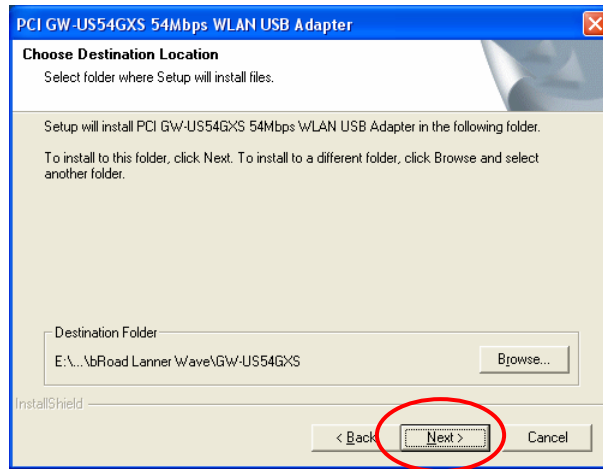
- Log on as Administrator to install.
- Do not plug the USB2.0 WiFi Adapter into the computer until 4(3).
- Disable the firewall on Windows XP and commercial security software during installation.

2. GW-US54GXS Setup

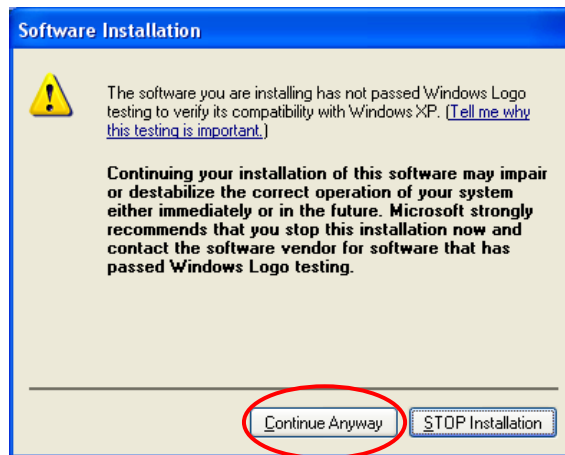
- (1) Run the installer of FW-US54GXS. If the menu is not displayed automatically, double-click on "GW-US54GXS_Windows_v6.17.0000_CE.exe" in the CD-ROM root.
- (2) Select "Next".



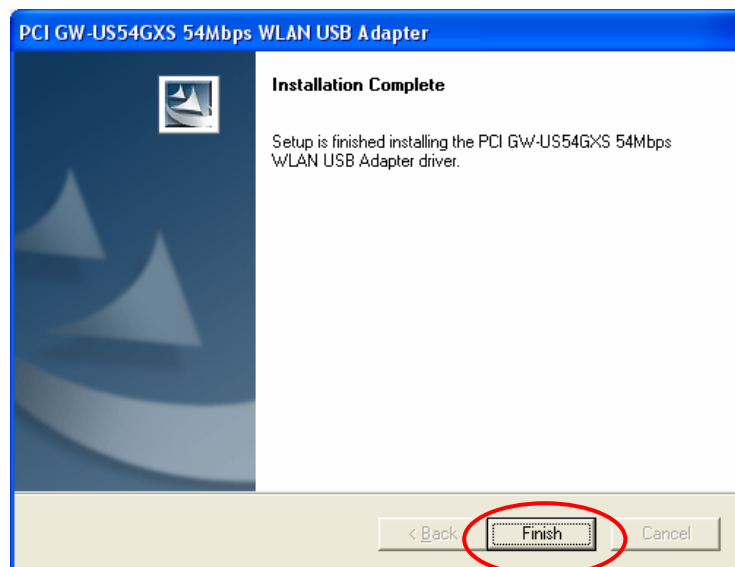
(3) Select "Next".



(4) Select "Continue Anyway".



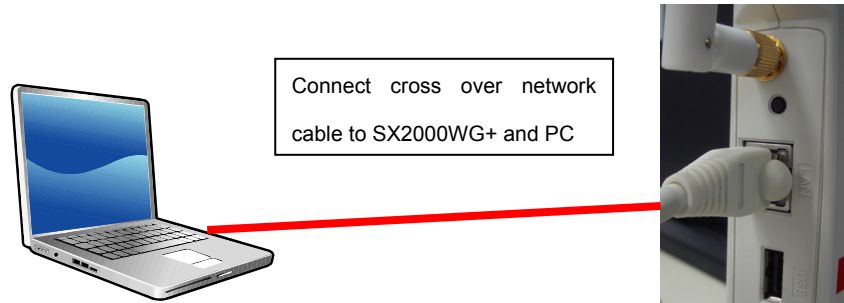
(5) Select "Finish".



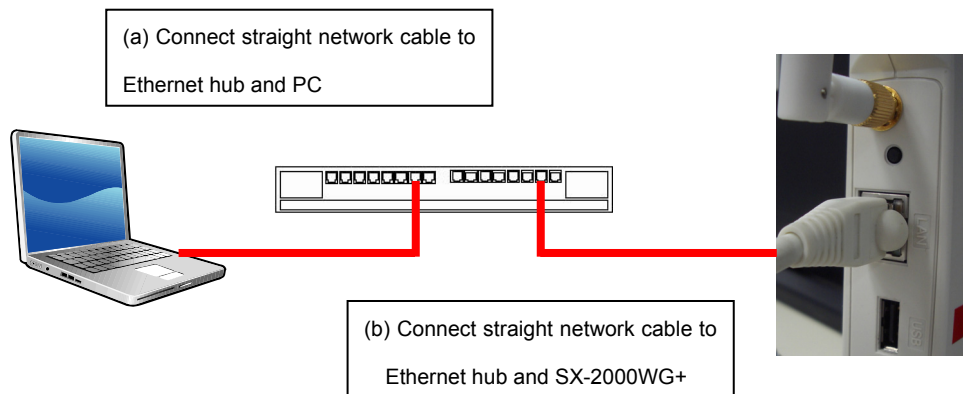
3. Device Server SX-2000WG+ Setup

(1) Please connect SX-2000WG+ and the PC with one of the following methods:

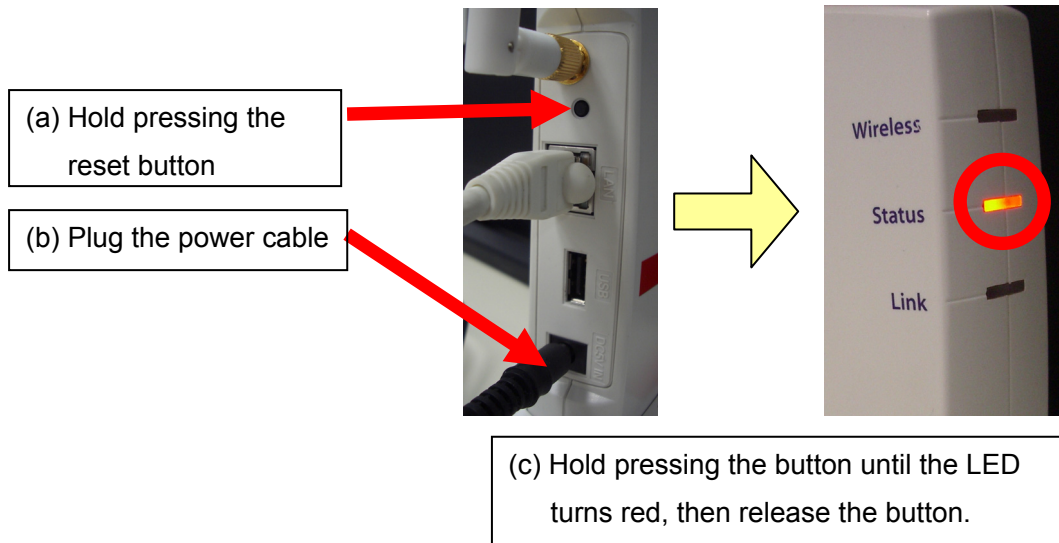
(a) Prepare a network cross over cable to connect SX-2000WG+ and PC



(b) Prepare two network straight cables and an Ethernet hub to connect SX-2000WG+ and PC

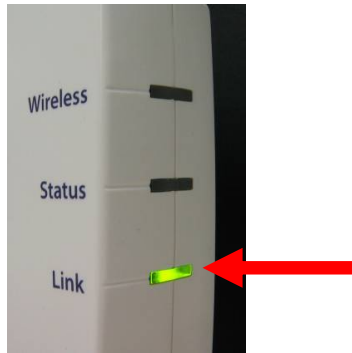


(2) Reset SX-2000WG+ as shown below

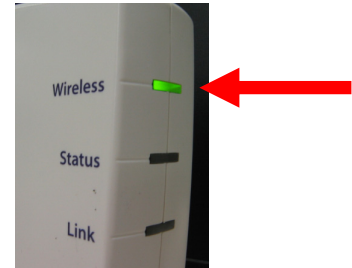


(3) And then, make sure the bottom LED is solid green.

If the LED shows wireless

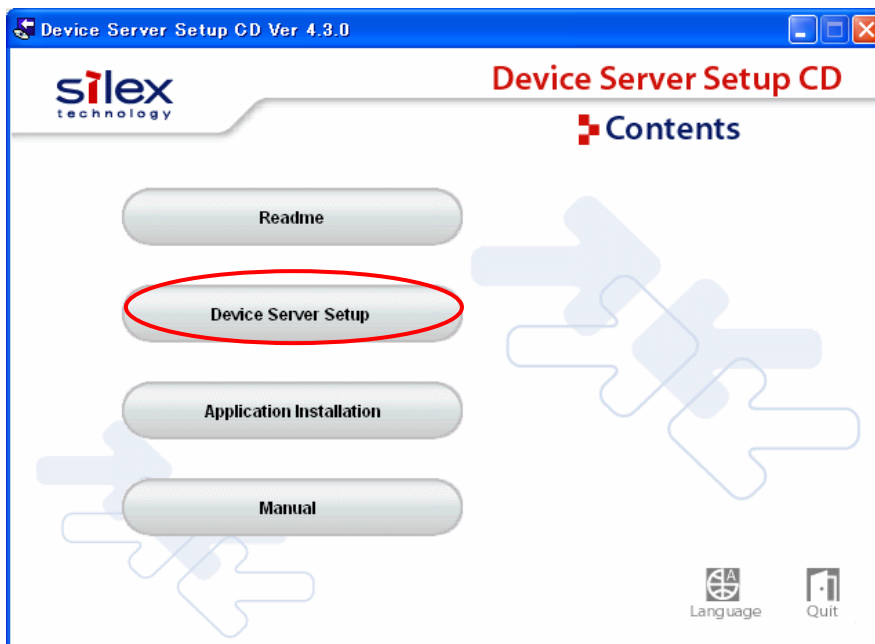


If the LED is blinking green (wireless connection) as shown below, follow (a)-(c) in the section 3(2)

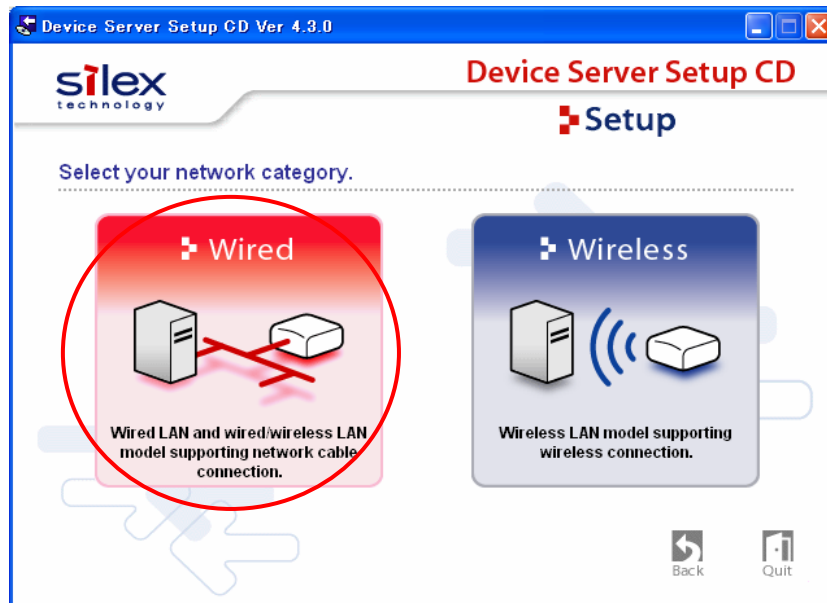


If still not good, refer to Trouble shooting 7(1)

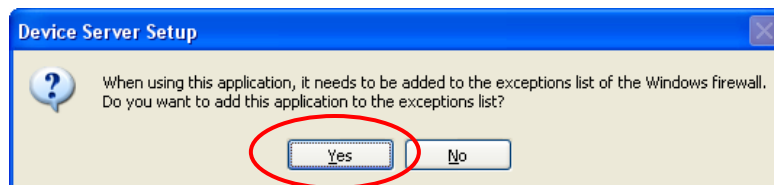
(4) Insert the CD-ROM bundled with SX-2000WG+ into the PC and select “Device Server Setup”. If the menu is not displayed automatically, double-click on “Autorun” in the CD-ROM root.



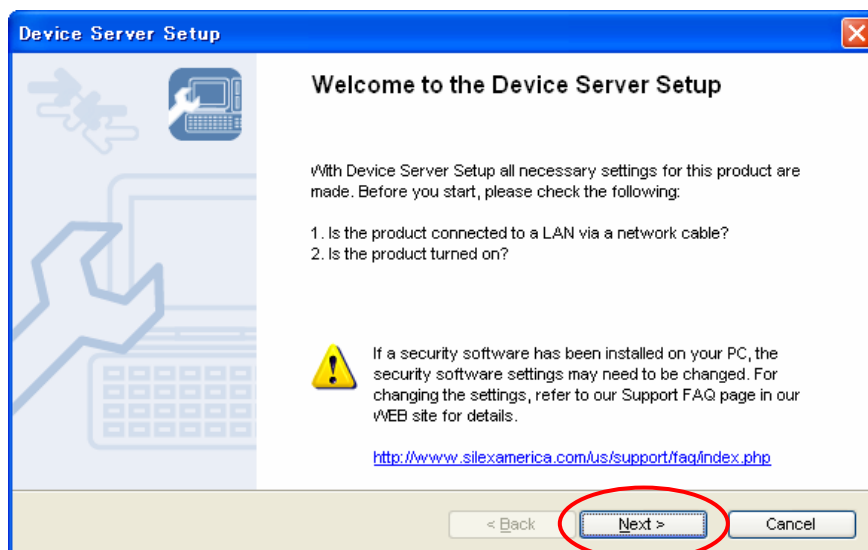
(5) Select "Wired".



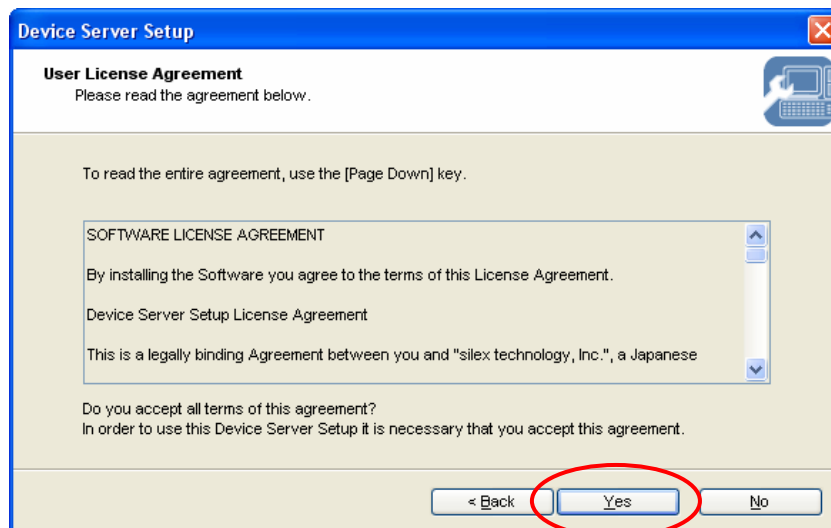
(6) Select "Yes".



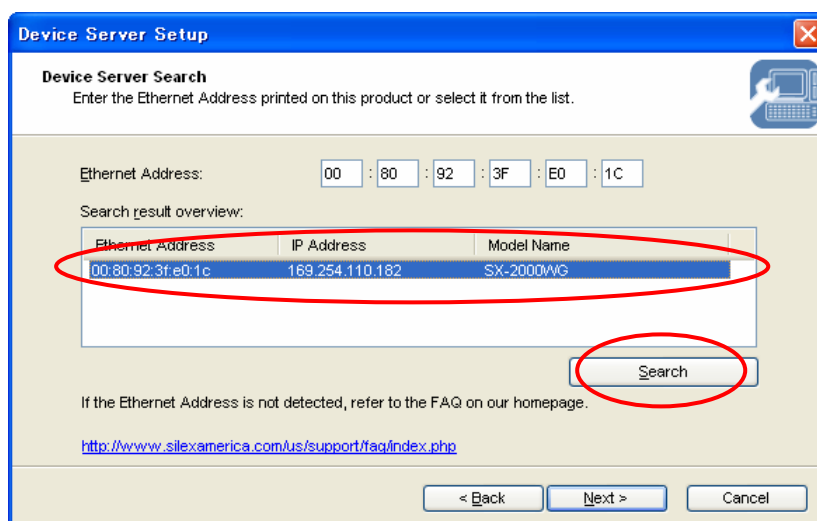
(7) Select "Next".



(8) Select "Yes".



(9) After a while, SX-2000WG+ is listed in the window. Click on the entry required and select "Next".

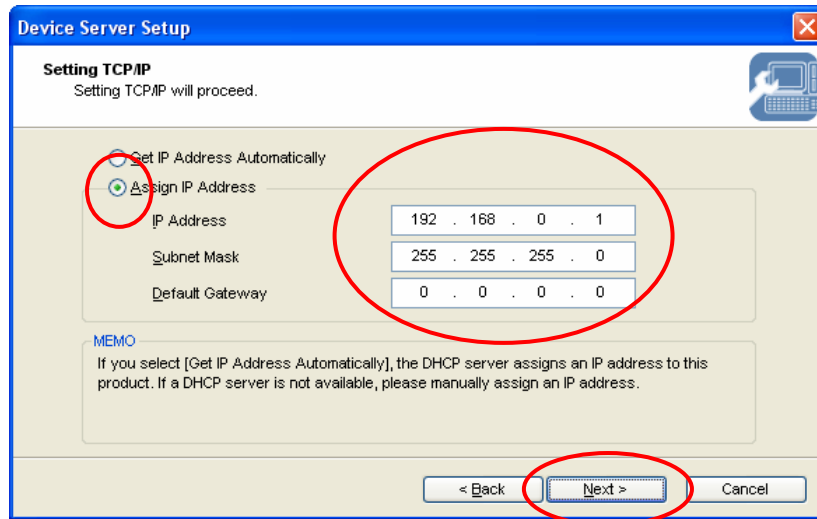


SX-2000WG+ is not listed

1. If SX-2000WG+ is still not listed in the window, click on the "Search" button and wait for 1 minutes.
2. If still not listed, please disconnect and connect the network cable, and restart the device Server (Disconnect and connect the power cable). Please wait 2 minutes to configurate wireless connection.
3. If still not listed, please go back to Step (a)-(c) in Section 3(2)

(10) Select "Assign IP Address" and input the default parameters shown below and then select "Next".

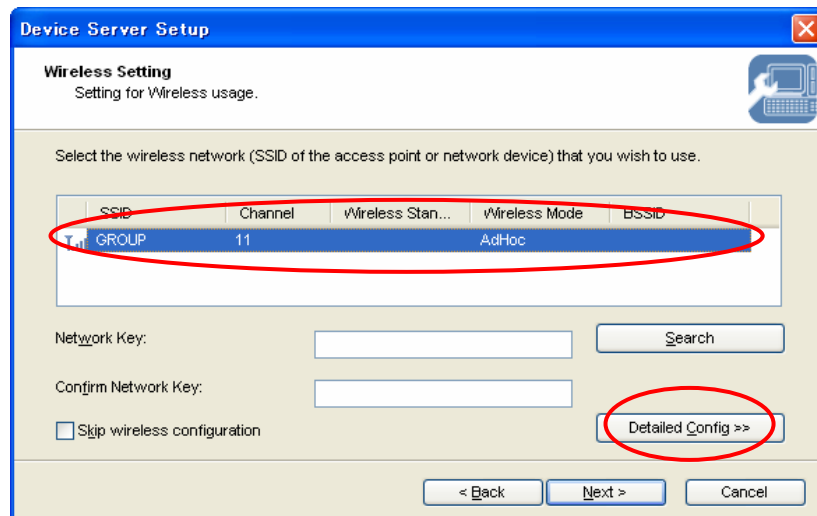
IP Address: 192.168.0.1
Subnet Mask: 255.255.255.0
Default Gateway: 0.0.0.0



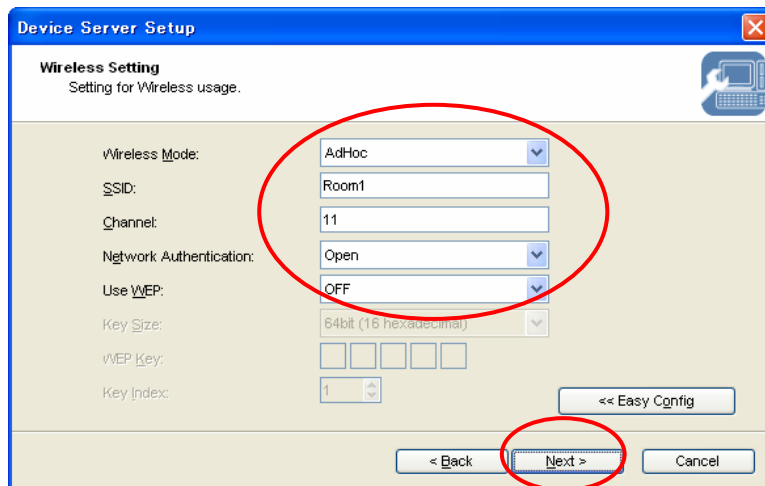
IP Address to be used

If the same parameters are used for other network, use a different subnet address such as 192.168.1.1. If you are not sure, please ask the network administrator.

(11) Select "SSID:GROUP" "Channel:11" and select "Detailed Config".



(12) Input the default parameters shown below and select “Next”.

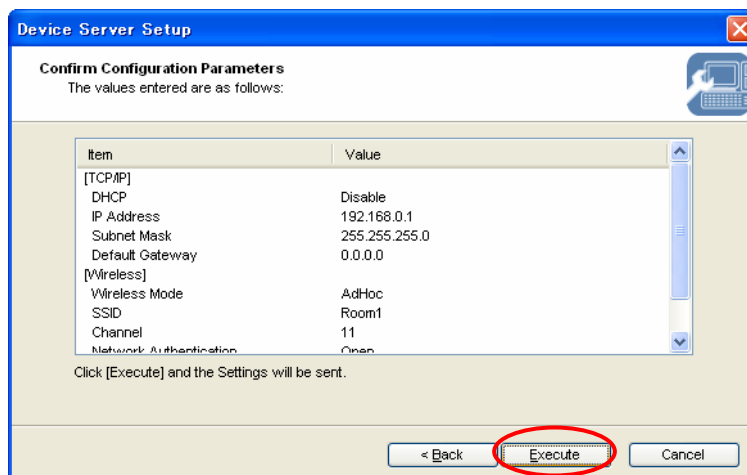


Wireless Mode: AdHoc
SSID: Arbitrary ("Room1" for this manual)
Channel: 11
Network Authentication: Open
Use WEP: OFF

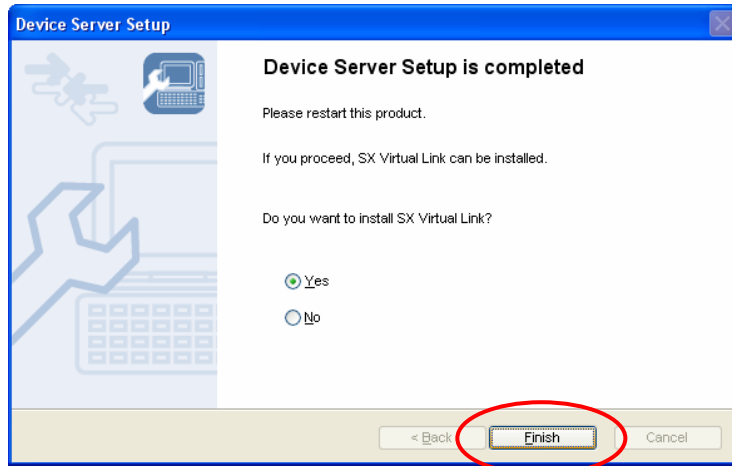
SSID

If you install multiple device servers in a close range, please assign unique SSID for each device server. For example, use the room name and so on.

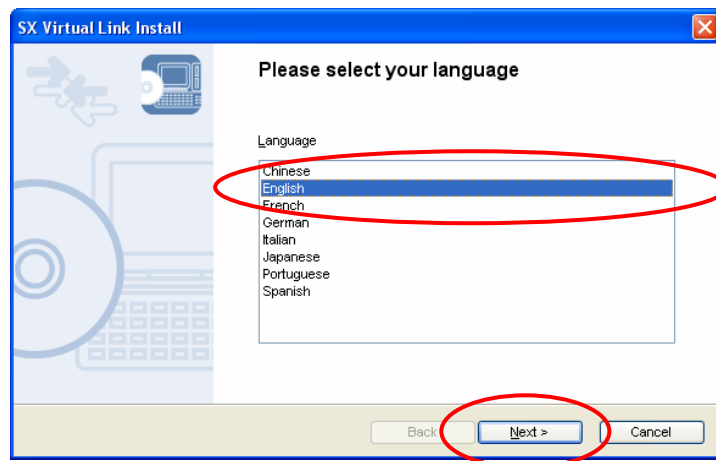
(13) Select “Execute”.



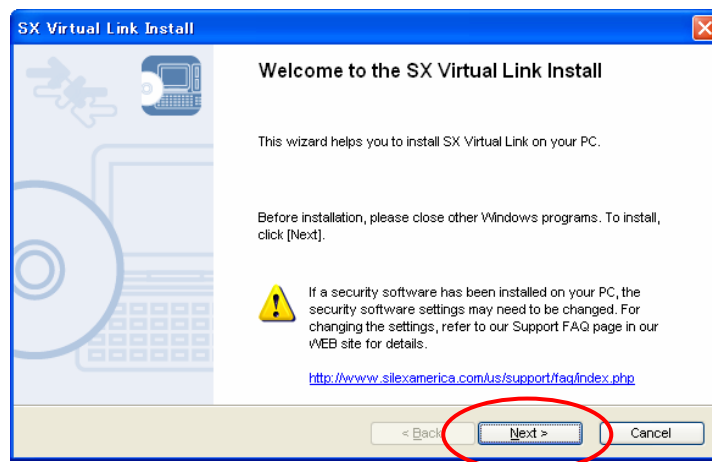
(14) Select "Finish" and install SX Virtual Link.



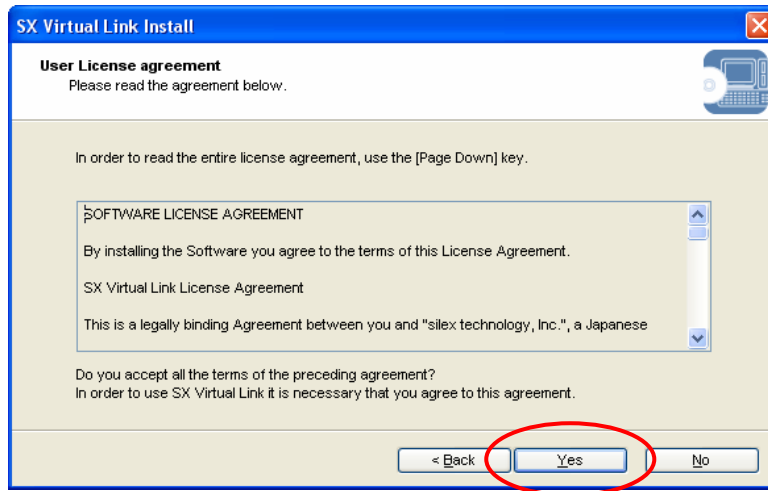
(15) Click on "English" and select "Next". Skip to (16) if the window is not appear.



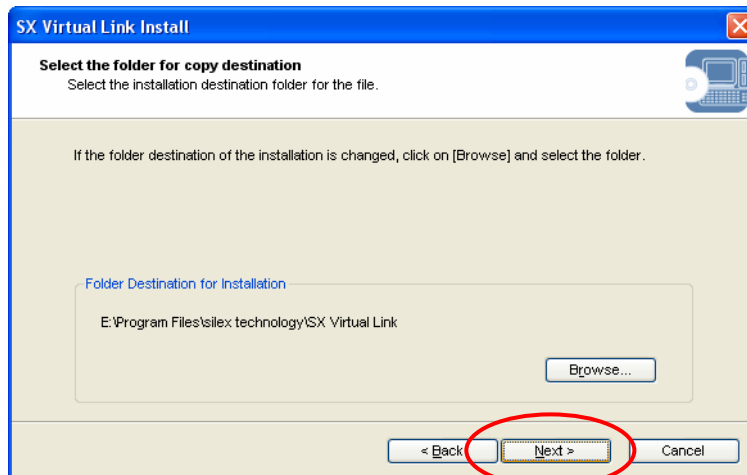
(16) Select "Next".



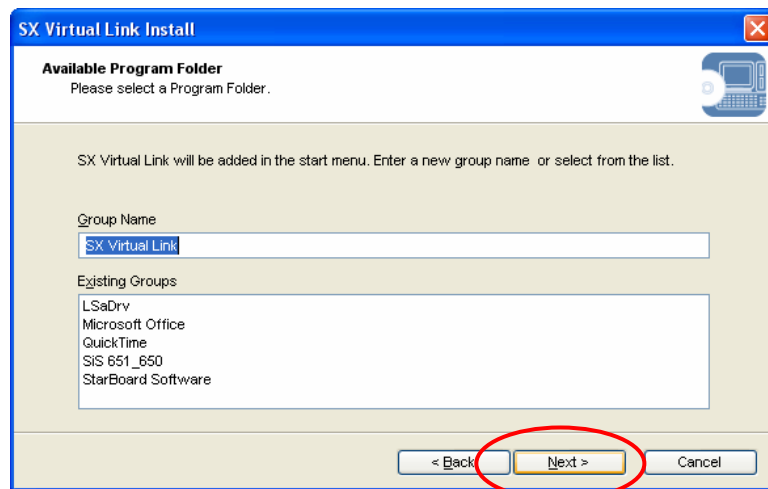
(17) Select "Yes".



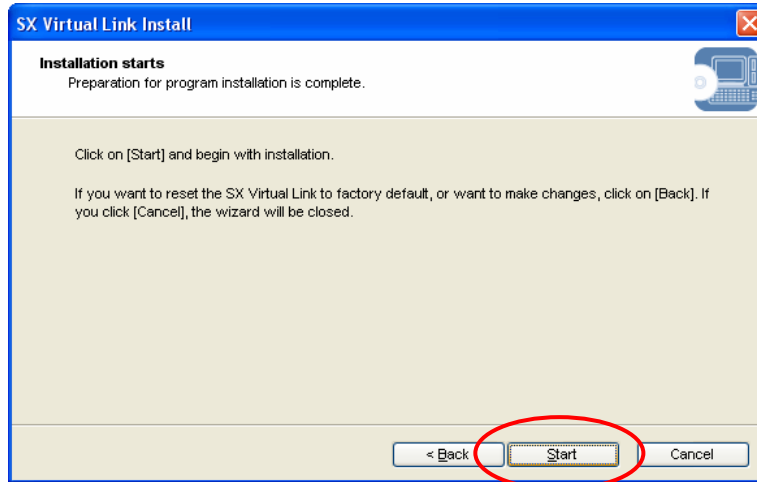
(18) Select "Next".



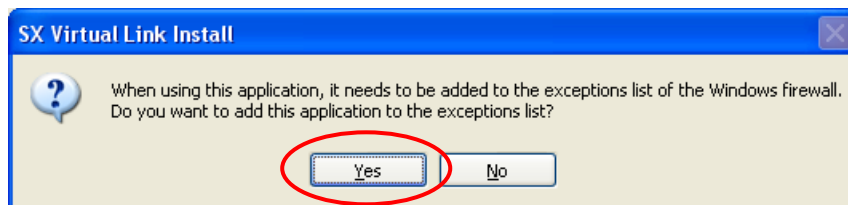
(19) Select "Next".



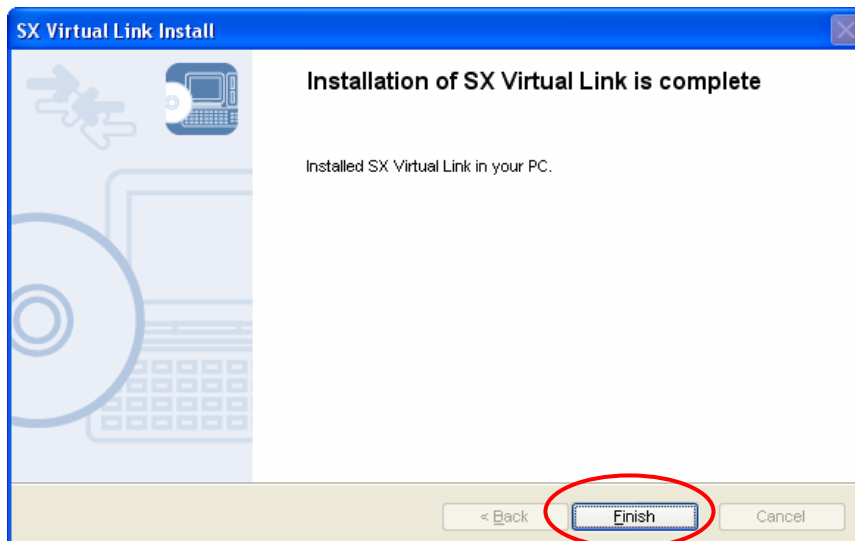
(20) Select "Start"



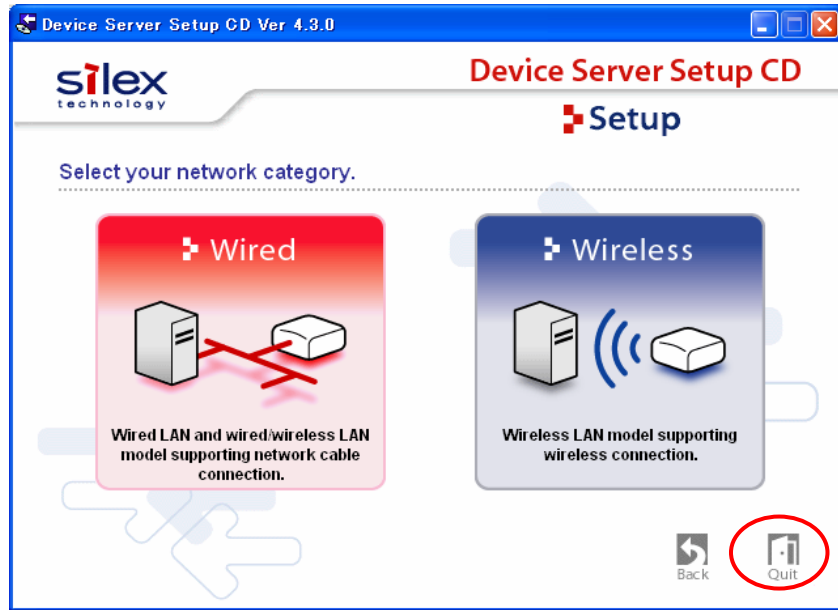
(21) Select "Yes".



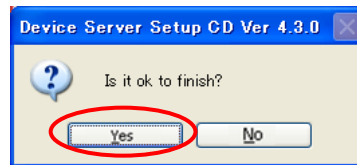
(22) Select "Finish".



(23) Select "Quit"

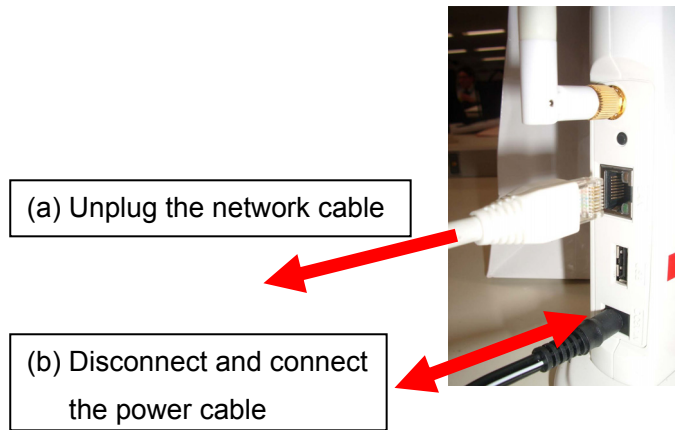


(24) Select "Yes"

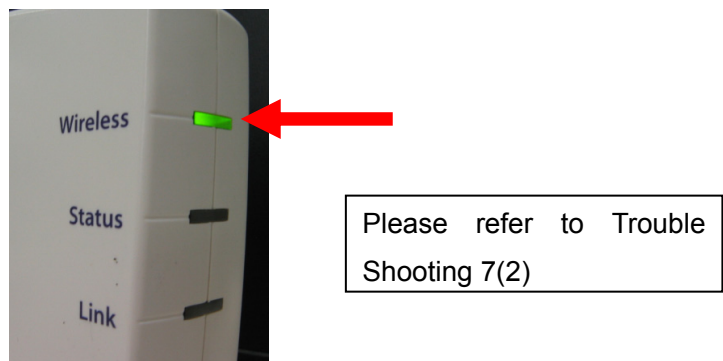


4. Planex GW-US54GXS Detailed Setup

- (1) Unplug the network cable from SX-2000WG+, and Restart SX-2000WG+ (disconnect and connect the power cable).



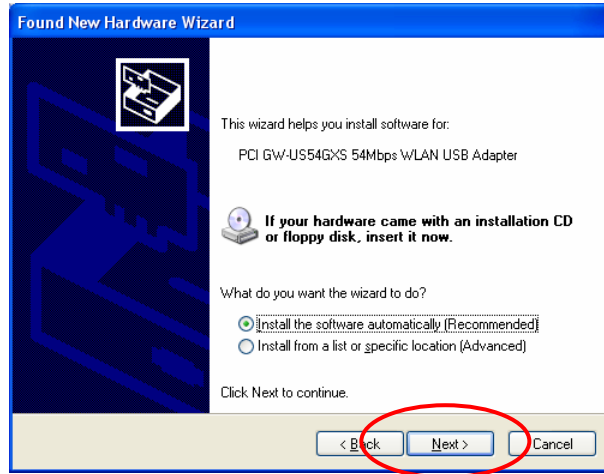
- (2) Please check if the top LED is blinking green.



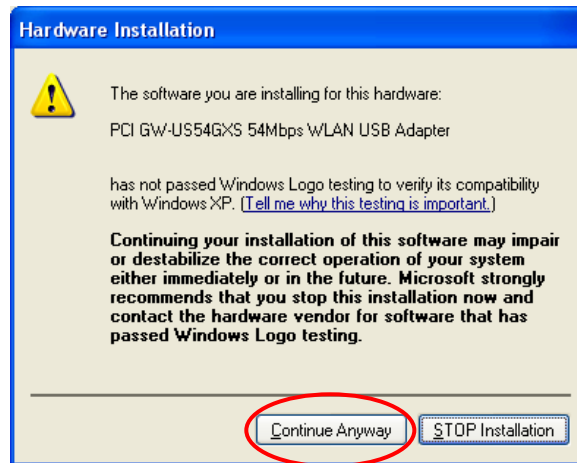
- (3) Plug GW-US54GXS into the PC.
- (4) Click on “No, not this time” and select “Next”.



(5) Select "Next".



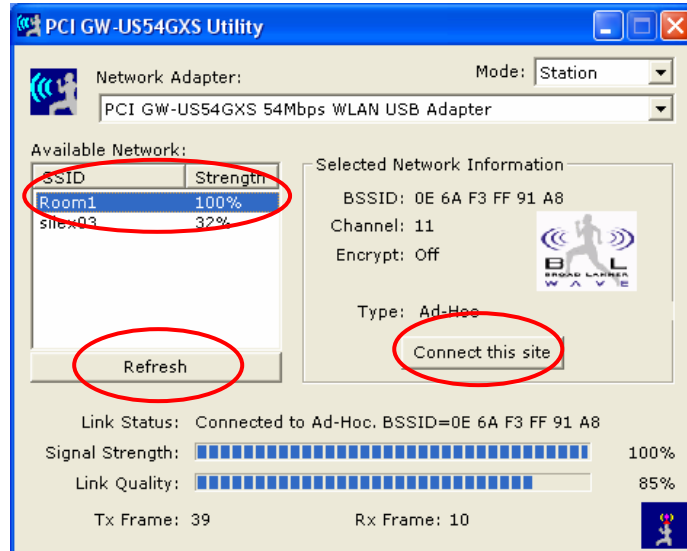
(6) Select "Continue Anyway".



(7) Select "Finish".



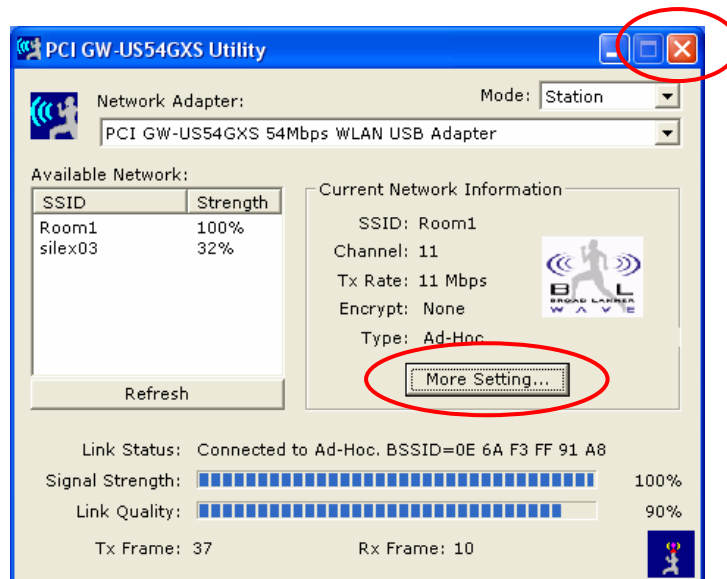
- (8) Run “Start”→”All Programs”→”bRoad Lanner Wave”→” PCI GW-US54GXS Utility”.
- (9) SX-2000WG+ is listed after pressing “Refresh” button. Click on the required SSID (“Room1” for this manual) and select “Connect this site”.



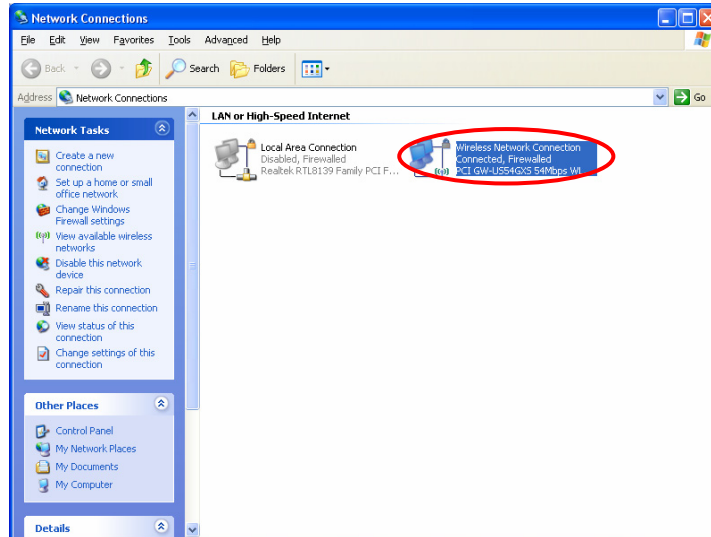
Required SSID is not listed

- If the required SSID is not listed in the window, click on the “Refresh” button and wait for 1 minute.
- If still not listed, please restart the SX-2000WG+ (Disconnect and connect the power cable). Please wait 2 minutes to configurate wireless connection.
- If still not listed, please go back to Step (a)-(c) in Section 3(2)

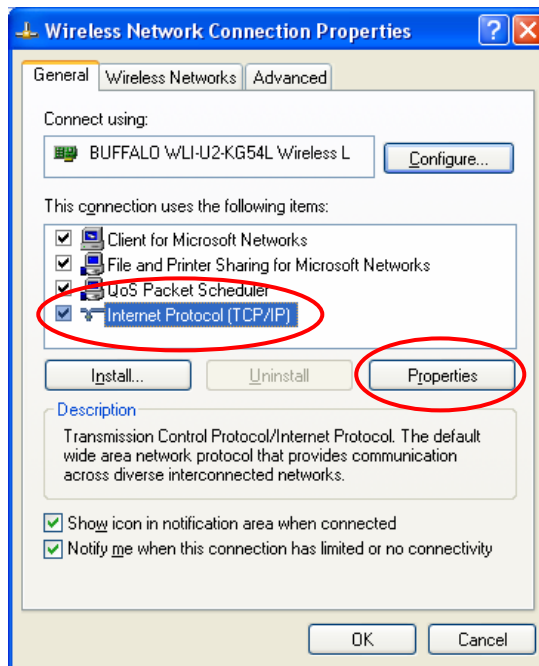
- (10) Check button name was changed to “More Setting”, then click on ”X”



- (11) Click on “Start”→ Right-click on ”My Network Places” and select “Properties”.
- (12) Right-click on the entry for GW-US54GXS and select “Properties”.

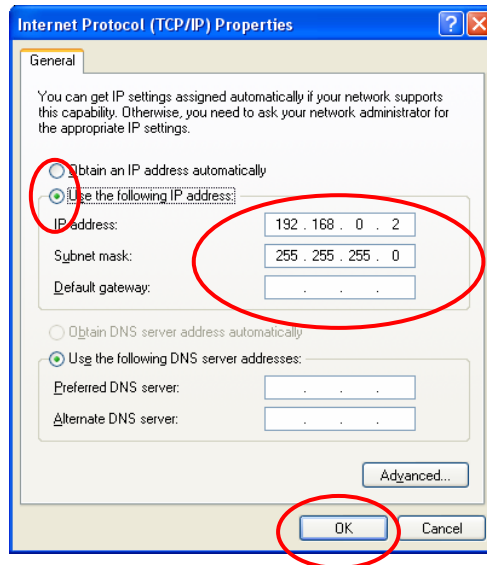


- (13) Click on “Internet Protocol (TCP/IP)” and select “Properties”.



(14) Input the following default parameters and select “OK” and close all windows:

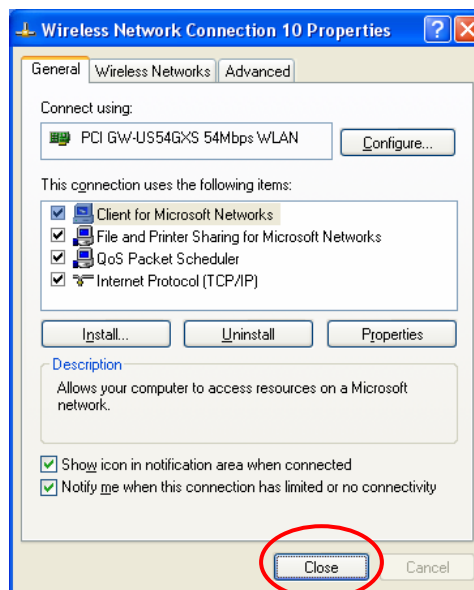
IP Address: 192.168.0.2
Subnet Mask: 255.255.255.0
Default Gateway: Blank



IP Address to be used

If you did not use the default parameters for SX-2000WG+, please use the relevant parameters. If you are not sure, please ask the network administrator.

(15) Select “Close”.



5. FX Setup

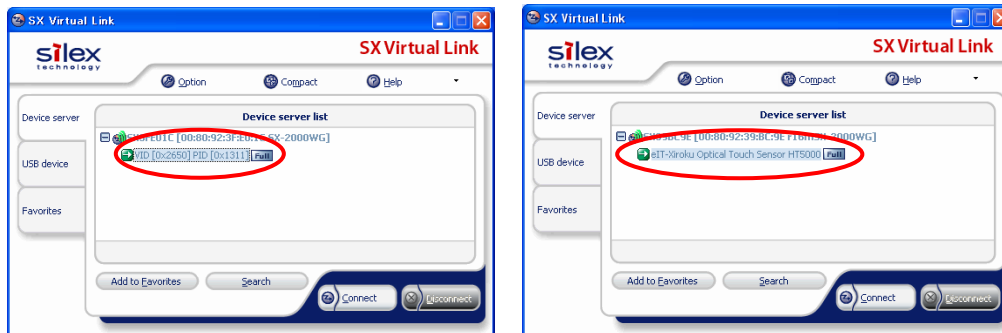
(1) Connect FX/FX-DUO to the USB port of SX-2000WG+ .

Device Connection to SX-2000WG+

If FX/FX-DUO is connected to SX-2000WG+, please do not use a USB hub. Connecting multiple USB devices is not supported if FX/FX-DUO is connected.

(2) Run “Start”→”All Programs”→”SX Virtual Link”→”SX Virtual Link”.

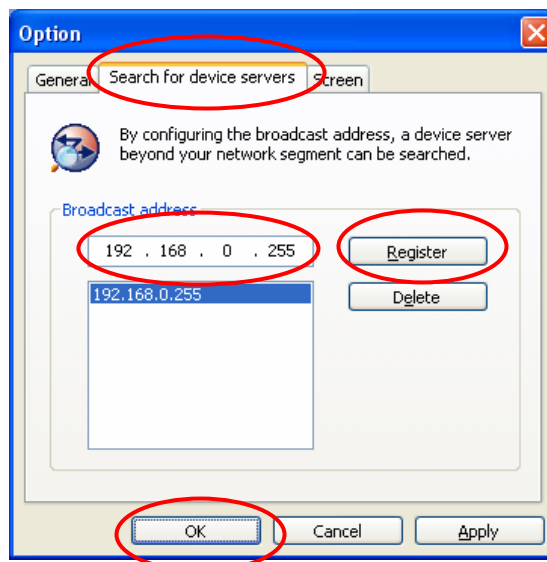
(3) Select “Option”.



FX

FX-DUO

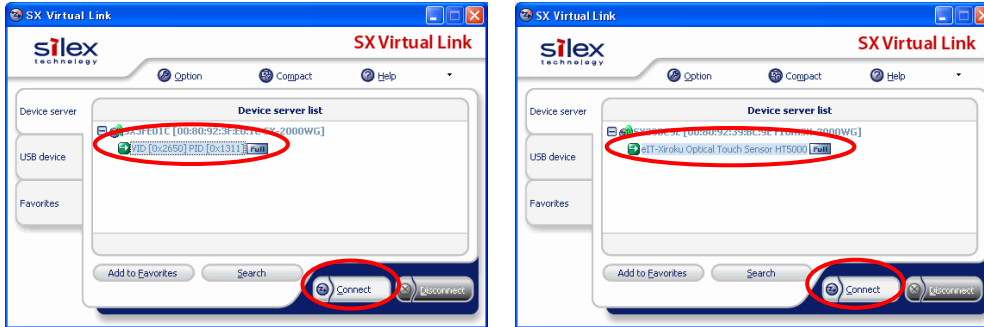
(4) Click on “Search for device servers” and input “192.168.0.255” and select “Register” as shown below and select “OK”.



Broadcast Address to be used

If you did not use the default parameters for SX-2000WG+, please use the relevant broadcast address. If you are not sure, please ask the network administrator.

(5) Click on the USB device entry listed in the window and select “Connect”.



FX

FX-DUO

SX-2000WG+ is not listed

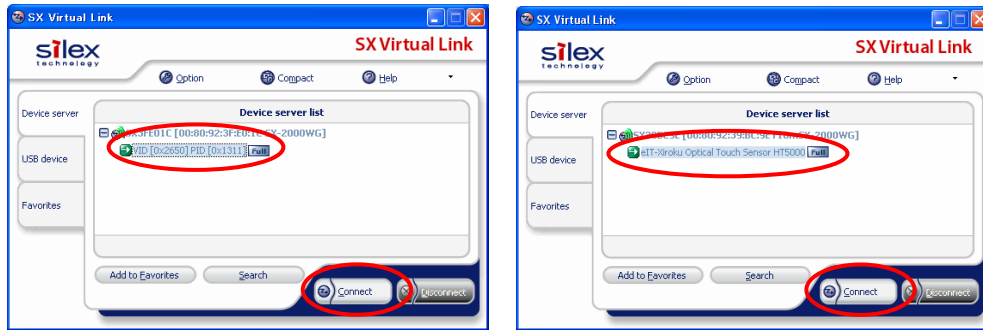
If SX-2000WG+ is not listed in the window, please refer to Trouble Shooting 7(2) to make sure the device server is working and the connection is established. If the ping command does not work properly, please check the settings of SX-2000WG+ and GW-US54GXS.

(6) Run “Start”→”All Programs”→” StarBoard Software”→” StarBoard Software”.You can see if FX/FX-DUO is connected by the task tray icon.



6. How to reconnect

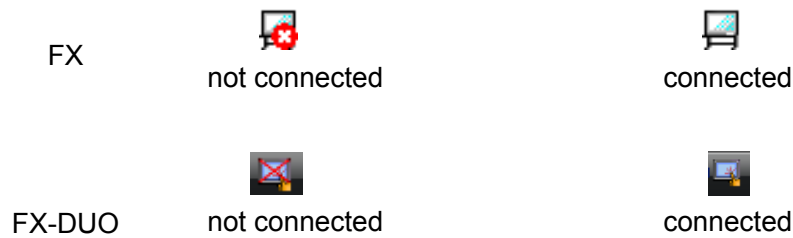
- (1) Make sure GW-US54GXS is connected to the PC.
- (2) Run “Start”→”All Programs”→”SX Virtual Link”→”SX Virtual Link”.
- (3) Click on the USB device entry listed in the window and select “Connect”.



FX

FX-DUO

- (4) You can see if FX/FX-DUO is connected by the task tray icon.

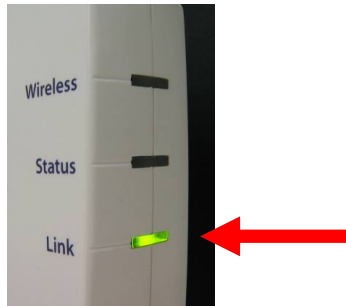


7. Trouble Shooting

(1) SX-2000WG+ is not displayed for initial settings (wired connection)

(a) Check the LED

If SX-2000WG+ is working with the wired mode, the bottom LED is solid green.

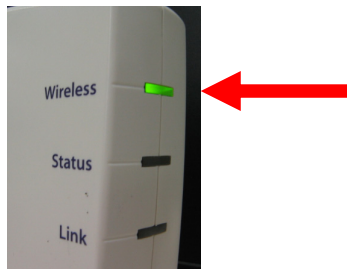


If not, please check if the hub and the cable are not faulty, and make sure the connection and restart SX-2000WG+ (disconnect and connect the power cable). If the LED is not still solid green, the unit might be faulty and contact the support for SX-2000WG+. Please refer to “Device Server Setup CD” for support center information.

(2) Connection not established (wireless connection)

(a) Check the LED

If the settings for wireless connection are configured properly, the LED is blinking green.



If not, please disconnect the network cable and restart the SX-2000WG+ (disconnect and connect the power cable).

If the LED is not still blinking green, please go back to Section 3 and set up again.

If still not, the unit might be faulty and contact the support for SX-2000WG+. Please refer to “Device Server Setup CD” for support center information.

(b) ping command

Run "Start"→"All Programs"→"Accessories"→"Command Prompt" and input "ping 192.168.0.1(IP address for SX-2000WG+) and press enter key.

```
E:\WINDOWS\system32\cmd.exe
C:\>ping 192.168.0.1
Pinging 192.168.0.1 with 32 bytes of data:
Reply from 192.168.0.1: bytes=32 time=1ms TTL=255
Reply from 192.168.0.1: bytes=32 time=1ms TTL=255
Reply from 192.168.0.1: bytes=32 time=1ms TTL=255
Reply from 192.168.0.1: bytes=32 time=1ms TTL=255

Ping statistics for 192.168.0.1:
    Packets: Sent = 4, Received = 4, Lost = 0 (<0% loss>),
    Approximate round trip times in milli-seconds:
        Minimum = 1ms, Maximum = 1ms, Average = 1ms

C:\>
```

Network Connection Established

```
E:\WINDOWS\system32\cmd.exe
C:\>ping 192.168.0.1
Pinging 192.168.0.1 with 32 bytes of data:
Request timed out.
Request timed out.
Request timed out.
Request timed out.

Ping statistics for 192.168.0.1:
    Packets: Sent = 4, Received = 0, Lost = 4 (<100% loss>),

C:\>
```

Network Connection Not Established.

After trying all the trouble shooting, please contact the support for SX-2000WG+.

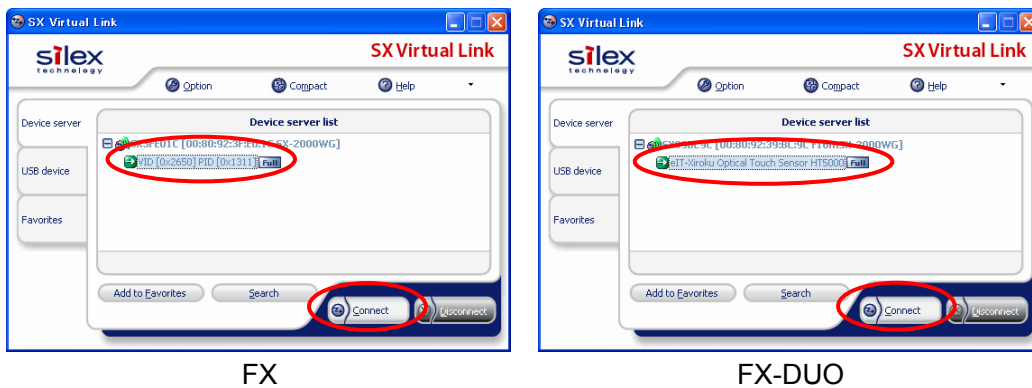
(3) FX/FX-DUO can not work correctly

If FX/FX-DUO can not work correctly, please try following recovery process.

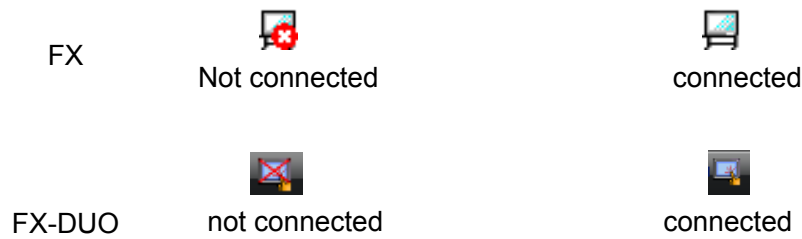
- (a) Unplug USB cable from SX-2000WG+, then the USB device entry listed in the window will be disappeared after 30 seconds.



- (b) Plug USB cable from SX-2000WG+ again, and the USB device will be listed in the window. Then click "Connect"



(c) You can see if FX/FX-DUO is connected by the task tray icon.



(d) If still not have troubles, please restart the SX-2000WG+ (Disconnect and connect the power cable). Please wait 2 minutes to configurate wireless connection. Then follow to section 6 to reconnect.

(e) If still not work correctly, reboot PC

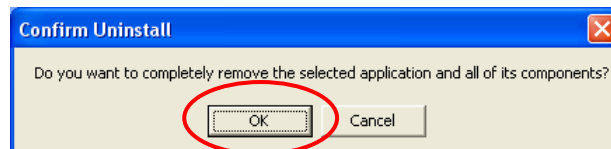
(4) How to re-setup USB GW-US54GXS

In order to re-setup GW-US54GXS, please uninstall the driver and install it again in accordance with following instruction.

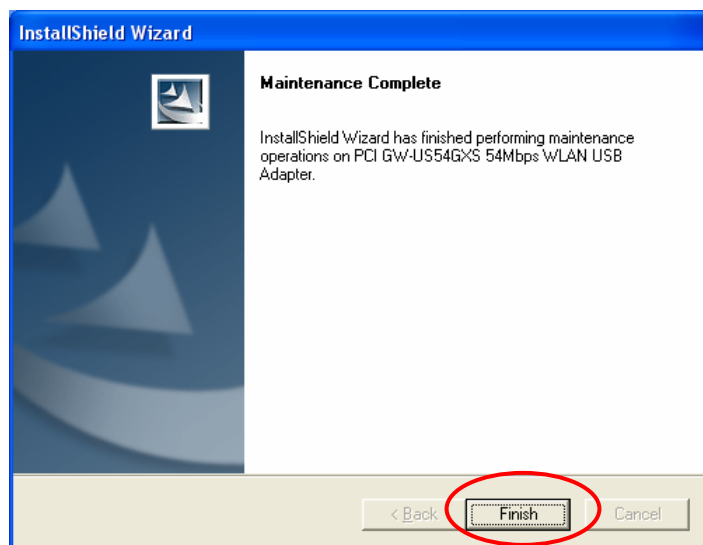
(a) Confirm GW-US54GXS is plugged on PC.

(b) Run “Start”→”All Programs”→”bRoad Lanner Wave”→” Uninstall GW-US54GXS Utility”.

(c) Select “OK”, then uninstall start.



(d) Installation wizard window will be appeared, then select "Finish"



(e) Unplug GW-US54GXS from PC

(f) Follow section 2 "GW-US54GXS Setup" to setup

-end of file-