



mimioBoard

mimio
flipChart™

mimio™

Think it. Share it.™

Step by Step Guide
to your
mimio Technology System
on Windows

Touchboards

205 Westwood Ave, Long Branch, NJ 07740

Phone: 866-94 BOARDS (26273) / (732)-222-1511

Fax: (732)-222-7088 | E-mail: sales@touchboards.com

About this manual

Congratulations on your ownership of a mimio system. mimio turns your ordinary whiteboard or flip chart into a digital information capture and presentation platform. Whether teaching, training, or collaborating, the valuable information on your board can now be an integral part of your digital information environment. That information can be shared real time or on demand, viewed locally or remotely, on the LAN, WAN, or via the Internet, as printed or shared as files stand-alone or embedded in documents from your favorite software applications.

The purpose of this manual is to provide you with a comprehensive understanding of the remarkable tool now in your possession through a detailed description of the varied and powerful features of your mimio system, from the most basic to the most elaborate. These features are made possible through the richness and power of the mimio software application. With the release of mimio version 2.7, any mimio technology based hardware systems can now be run from this latest and most advanced mimio software version.

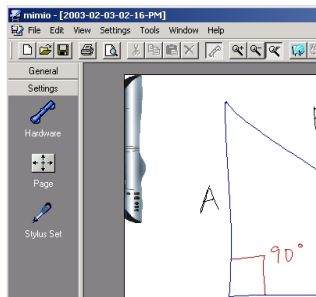
We highly recommend, if your currently installed mimio software is not version 2.7.2 or later, that you obtain a copy of the installation v. 2.7.2 CD or go to

<http://www.mimio.com/software> where you can download the installer for free.

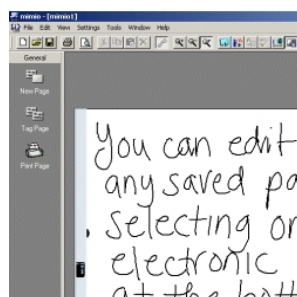
Installation is simple and straightforward. If you have registered optional software plug-ins such as classRoom, writingRecognition, or boardCast please be aware they will need to be re-installed, after installing the base mimio 2.7 application, using the originally supplied usernames and serial numbers. ***Note: Windows 95 and NT, which do not support USB, must install mimio v. 2.1 software also available for download at the same location.***

The majority of this manual describes and depicts mimio software being used with mimio Xi, the most advanced mimio technology solution. If you use the Xi technology-based mimioBoard or the original mimio for Windows (now referred to as “mimio classic”) or mimio flipChart there are some differences noted in the body of this document. For details of Box Contents and the Device Interface for mimioBoard, mimio (classic) for Windows and mimio flipChart, see the Appendices at the end of this document. Unless otherwise noted, you can assume that features are essentially the same for any mimio product used.

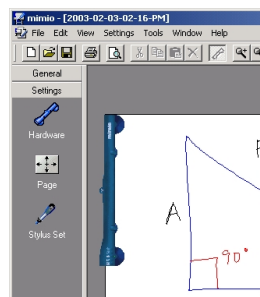
The mimio software application is designed to automatically detect the type of mimio device connected to your PC. The appropriate software icon display and interface will be shown as indicated below.



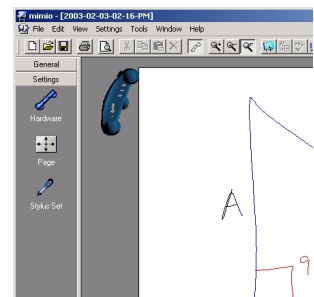
mimio Xi



mimioBoard



mimio “classic”



mimio flipChart

Table of Contents (with [hyperlinks](#))

• Box Contents – mimio Xi	Page 4
• Mimio Xi Interface	Page 5
• mimio Xi Equipment Set Up	Page 6
• mimio Xi Modes of Operation	Page 9
○ Stand-alone mode	
○ Downloading data	
○ Connected Mode	
• Getting Started	Page 12
○ General File Settings	
○ Settings - Page	
• Working with mimio	Page 14
○ General	
○ Navigating the mimio software	
○ Control Panels	
○ Views	
○ Full screen mode: Virtual Whiteboard	
○ Notes Tab	
○ Editing Pages	
○ Saving mimio files	
○ Copy and Paste	
○ Exporting data as an image	
○ Exporting data as HTML	
○ Plug-ins	
○ Optional Plug-ins	
• mimioMouse – Interactive Whiteboard Mode	Page 28
○ Getting Started in Interactive Mode	
○ Interactive Mode Features	
○ Mark-up and Annotation	
○ mimio Dual Mode Operation	
• Quick Tips for Optimizing mimio Xi Performance	Page 33
• Frequently Asked Questions	Page 34
•	
Appendix – mimioBoard – Contents & Set-up	Page 35
Appendix – mimio “classic” – Contents & Set-up	Page 37
Appendix – mimio flipChart – Contents & Set-up	Page 39

Box Contents – mimio Xi

Check to make sure that you have all of the Xi components listed.

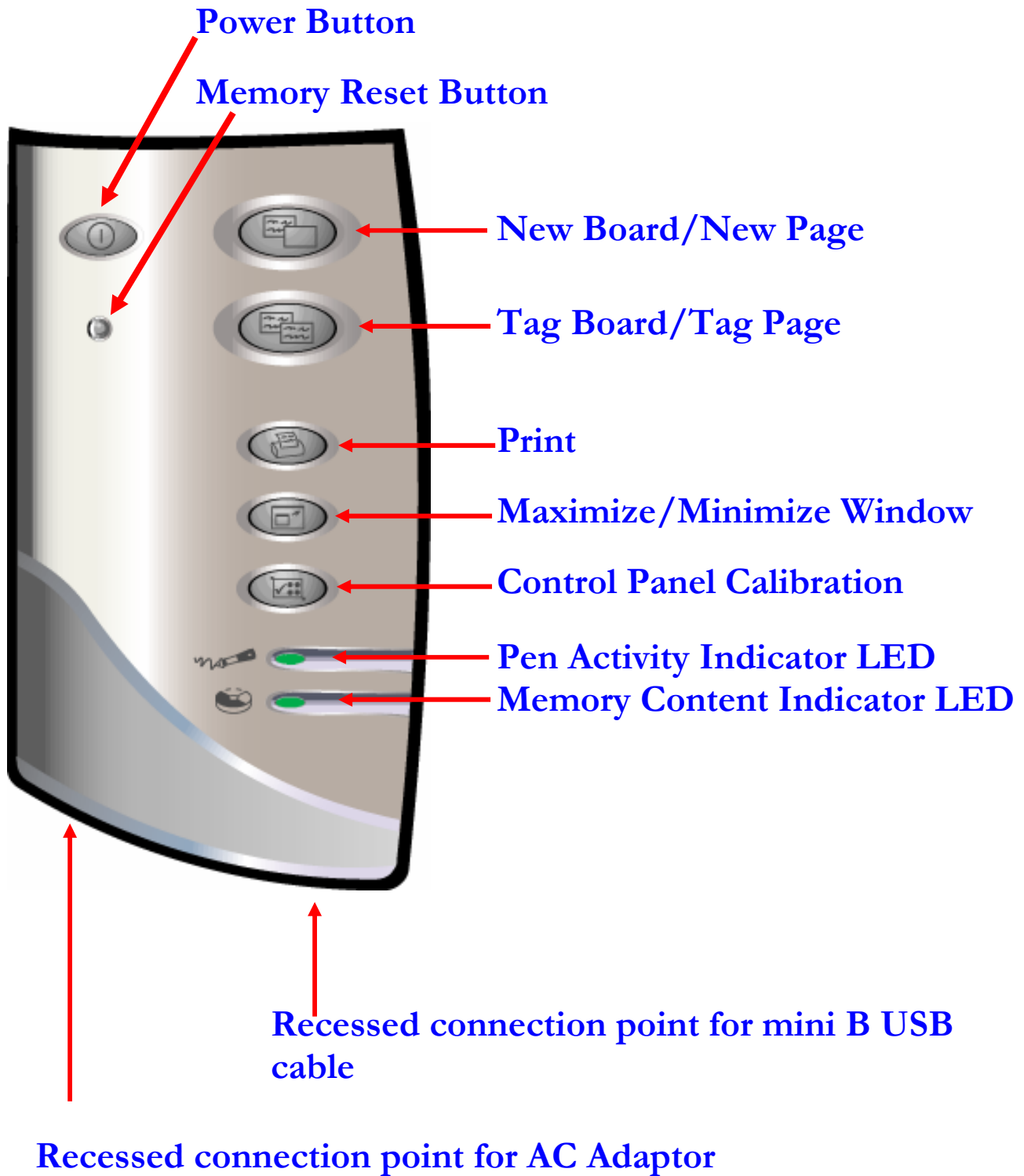
- mimio Xi Capture bar
- 16' (5m) mini-B USB cable
- Four (4) mimio styli, 4 smartCaps (black, blue, green, and red) and four (4) Expo dry-erase markers
- mimio eraser and eraser holder
- One (1) AAA battery for eraser
- Four (4) N-Cell batteries: 1 for each mimio styli
- Four (4) AA batteries for mimio Xi capture bar
- One (1) plastic mimioMouse pen insert
- Two (2) mounting brackets
- “Getting Started Guide” with mimio software CD, linkUSB Reference Card, Technical Support Info card



System Specification:

- MS Windows® 98, 98 SE, 2000 or XP
- Windows compatible PC with Pentium™ II 400 MHz+ processor
- 32 MB RAM minimum (64 MB recommended)
- 15 MB free hard drive space
- CD Rom Drive
- Available USB port

Mimio Xi Interface



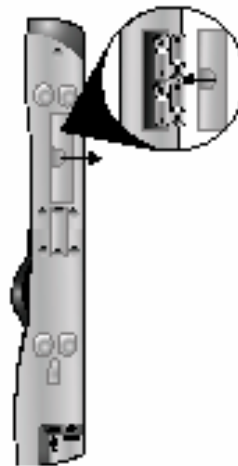
Equipment Set Up

After opening the mimio Xi box, install the 4 AA batteries (included) into the Xi bar.

Unfold the mimio Xi capture bar.

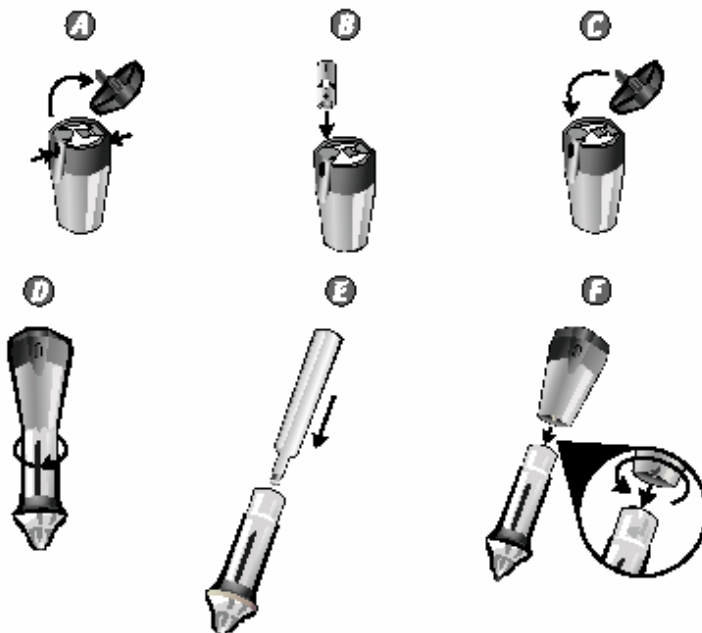


Install four (4) AA batteries.



Second, install the appropriate batteries into the stylus pens and the mimio eraser.

Insert N-cell batteries and markers into the mimio styli.



Insert AAA battery into the eraser.



Note: Put the same color dry erase marker with the same color stylus (match the cap color of the stylus pen). For mimioMouse mode, place the plastic pen insert into the stylus pen of your choice.

Equipment Set Up (cont.)

Install the software from the CD included in the box.

Load the mimio CD into your computer.
Click on "Install mimio software."



After inserting the CD, the browser shown below will appear. Click on "mimio" under "install software". The software is free and can also be downloaded from our web site: www.mimio.com.

mimio®

- Install Software**
 - mimio®
 - Adobe® Acrobat Reader®
 - mimio writingRecognition™ \$
 - mimio boardCast™ \$
- User Guides**
 - mimio Xi™ Getting Started
 - mimioBoard™ Getting Started
- Control Panels**
 - mimioMouse™ Control Panel
 - Calculator Control Panel
- More Info**
 - mimio Xi
 - mimioBoard
 - mimio classRoom™
 - mimio writingRecognition
 - mimio boardCast
- On the Web**
 - mimio Website
 - mimio Store
 - Where to Buy
 - Customer Support
 - Contact
- EXIT**

\$ - Purchase required



mimio Software supports mimio, mimio flipChart, mimio Xi, and mimioBoard.

Copyright© 2003 Virtual Ink Corporation, all rights reserved.™ mimio and Virtual Ink are registered trademarks of Virtual Ink Corporation. mimio Xi, mimioBoard, mimio flipChart, mimio writingRecognition, mimio boardCast, and mimio classRoom are trademarks of Virtual Ink Corporation. Adobe Acrobat Reader is registered trademark of Adobe Systems Incorporated.

Equipment Set Up (cont.)

Attaching mimio Xi to the whiteboard

mimio Xi can be attached to the whiteboard in two ways.

Temporary suction cup attachment:

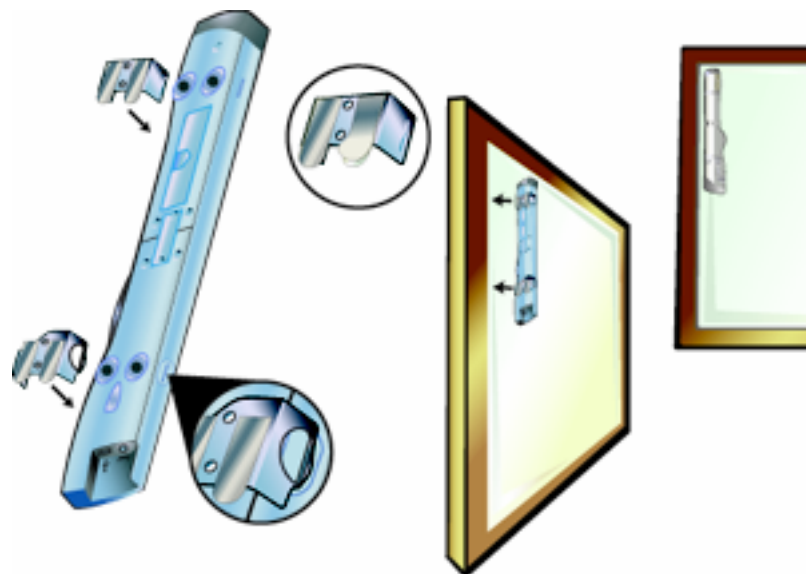
When using mimio Xi on a board in a location where it will not remain for more than a day, the Xi capture bar can be attached using the suction cups. When attaching Xi using suction cups, make sure the board and suction cups are clean (wipe with tissue – clean the suction cups only with water or alcohol – NEVER use solvent cleaners on the suction cups). When cleaning the upper left hand corner of the board, also make sure there are no scratches or surface irregularities that would prevent a secure attachment.

NOTE: After attaching Xi with suction cups, make sure that both the top and bottom sets of cups have fastened properly by applying some lateral force left, right, up and down parallel to the board surface. If the suction cups loosen when doing this, re-clean and re-attach.

Long-term attachment using mounting brackets:

If your Xi will be used frequently on a particular board or if you wish to use Xi on any board for an extended period of time (days or more), it is highly recommended to use the mounting brackets, of which one pair is supplied with your Xi. The mounting brackets can be attached by clipping them onto the Xi bar and then removing the protective slip over the 3M “Command” adhesive strips. Press the bar with the clips onto the upper left corner of the whiteboard in vertical orientation for landscape oriented boards or horizontally for portrait oriented boards. The clips will remain in place but the bar can be easily clipped in and out of the brackets and will remain precisely positioned as long as desired. This fixed positioning can be particularly useful when your Xi is used with the mimioMouse interactive whiteboard feature and a fixed position projector since it permits calibration to be retained and eliminates the need for recalibration each time mimio Xi is used.

NOTE: Additional mounting brackets are available from your mimio reseller or from Virtual Ink.



Modes of Operation

Stand-alone mode

mimio Xi enables you to capture whiteboard data (notes, drawing and diagrams) in 2 modes: **stand-alone** or **connected to a PC**. *Note: mimioBoard, mimio flipchart and mimio classic do not support stand-alone operation.*

A.) Battery power

With mimio Xi's built-in memory and battery power, capturing data is as easy as attaching the bar to the whiteboard, powering on and writing. No computer, no cables ... it's that easy! All of the notes from a meeting or lecture lasting up to 10 hours can be captured without a computer.



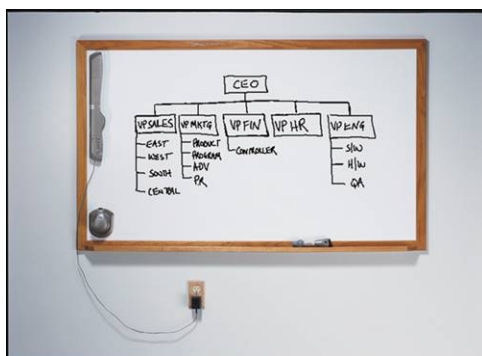
In battery mode, you will need to press the Power Button to turn mimio on. The color of the Power Button indicates the battery life status:

- **Green:** Unit on. Over 5 hours battery life remaining
- **Yellow:** Unit on. Between 1-5 hours battery life remaining
- **Yellow flashing:** Unit on. Battery life under 1 hour remaining

B.) AC Power with optional Adapter

In stand-alone mode, mimio Xi can also be powered from the optional AC Power Adapter, allowing you to conserve batteries. With this option, getting started is as easy as attaching the bar, plugging in the adapter and writing. You never have to press the Power button; it's always on!

NOTE: you can use re-chargeable batteries in your mimio Xi but they are not re-charged by Xi when using the AC Power Adapter.

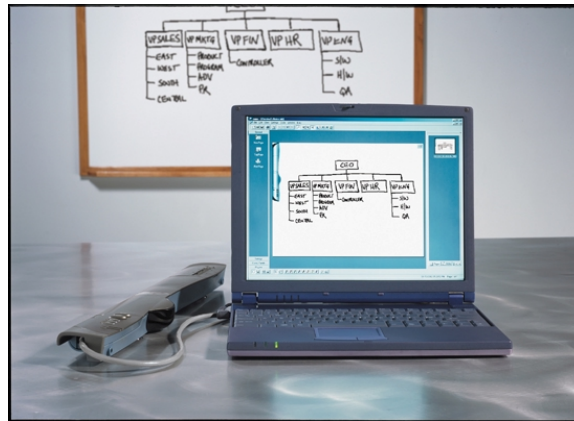


Data Recording Indicators: In stand-alone mode the flashing green **Pen Activity** and **Memory Content LED's** on the capture bar confirm your notes are being recorded and stored.

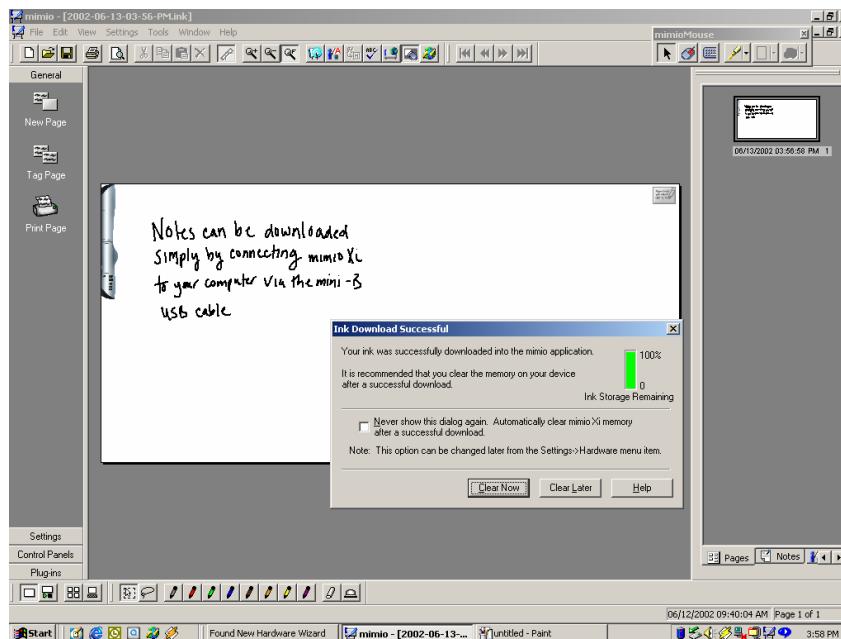
Modes of Operation (cont'd.)

Downloading data

After whiteboard data has been captured in stand-alone mode, it can be downloaded to your computer at your convenience by attaching the mini-B USB cable connector to mimio Xi and USB host connector to the computer. The download process begins automatically.



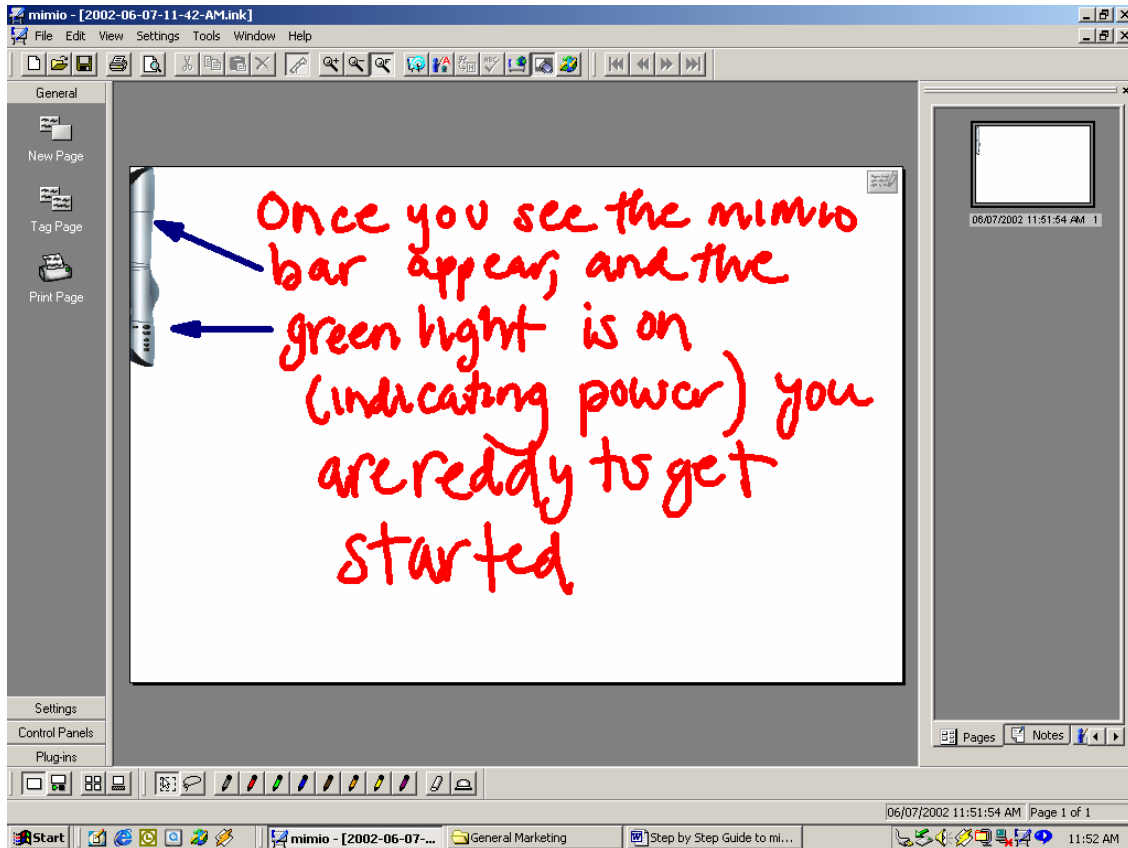
After the whiteboard data has been downloaded to your computer, it can be cleared (**Clear Now**) or retained (**Clear Later**) from the Xi memory. Once downloaded to your PC, data can then be easily saved and then shared. To ensure you always have memory available on your Xi for any session, we recommend that you check the box for “don’t show me this window again” and then press **Clear Now**. Under **Settings–Hardware** in the mimio software, you can preset or change your **Download Options** (see p. 12). You will also find a meter indicating memory remaining in your mimio Xi if you don’t clear it.



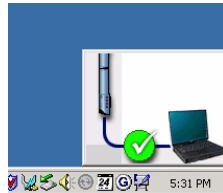
*Note: Data in the Xi bar memory can also be cleared manually by pressing and holding the **Memory Reset Button** on the capture bar for one second with a thin pointed object (i.e. pen or pencil).*

Connected Mode

Once connected to your PC, mimio Xi, mimio classic, and mimio flipChart all allow you to capture whiteboard or flip chart notes in color and in real time within the mimio v. 2.7 software application running on your computer.



When you attach mimio Xi to the whiteboard and connect it to your computer via the mini-B USB cable you will notice that a graphic appears in the lower right hand corner of your screen (as shown) indicating that the bar is connected and communicating with the mimio software.



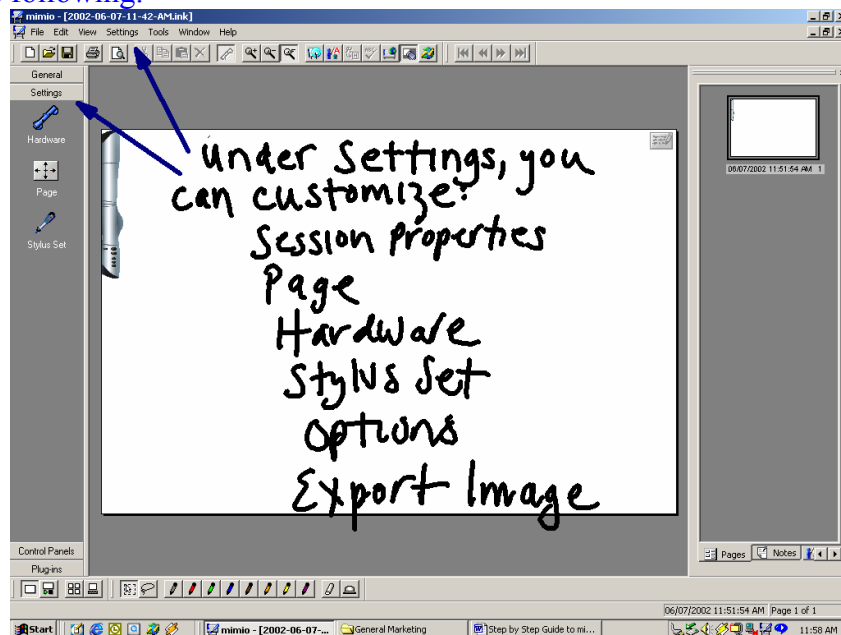
You will also notice that the capture bar appears on the virtual whiteboard in the mimio software. The power button of mimio Xi will illuminate if not already running on battery or AC power. With mimio classic and flipchart, the LED on the capture bar will illuminate yellow when physically connected to the PC and will change to green when communicating with the mimio software. If the mimio Xi capture bar image (or mimio classic or flipChart bar images, when using those devices) does not appear on the virtual whiteboard in the mimio software, you are NOT connected.

Note: When connecting a *serial (no USB) mimio capture device* for the first time with mimio software version 2.7 or higher you will need to right click on the mimio icon in the task bar on the bottom right of your desktop and select **“Detect serial Capture Device”**.

Getting Started

General File Settings

Under the **Settings** menu (located on the main menu bar and on the far left-hand side), you can customize the following:



Session Properties: Add a title to your mimio file; list the attendees of the meeting and a short description of the meeting.

Hardware: You can change the orientation of the capture bar to **vertical** or **horizontal** depending on the orientation of the whiteboard you are using. You can also test for signal interference under **Test Environment**. The most common types of interference are caused by motion detectors and direct sunlight to the mimio bar. If the Test Environment results indicate interference, attempt to position the board and capture bar out of the “line of sight” of such devices or signal sources. Also try positioning the bar horizontally. Under **Download Options**, you can also select your preferences for data downloaded after use of Xi in stand-alone mode.

Page: mimio Xi will “cover” any whiteboard area up to 4’ x 8’ in size. **For page size setting options see page 9.**

Stylus Set: You can change the **color** and **line thickness** of each individual stylus pen.

NOTE: You can change the pen stroke color and thickness for all previous pen strokes by pressing “OK” on the “**Apply to Previous**” box or you can have the changes affect only strokes made after the setting change. Attaching a different **smartCap** to the top of the stylus pen also allows you to change the color of the recorded ink to match the available colors of dry erase markers.

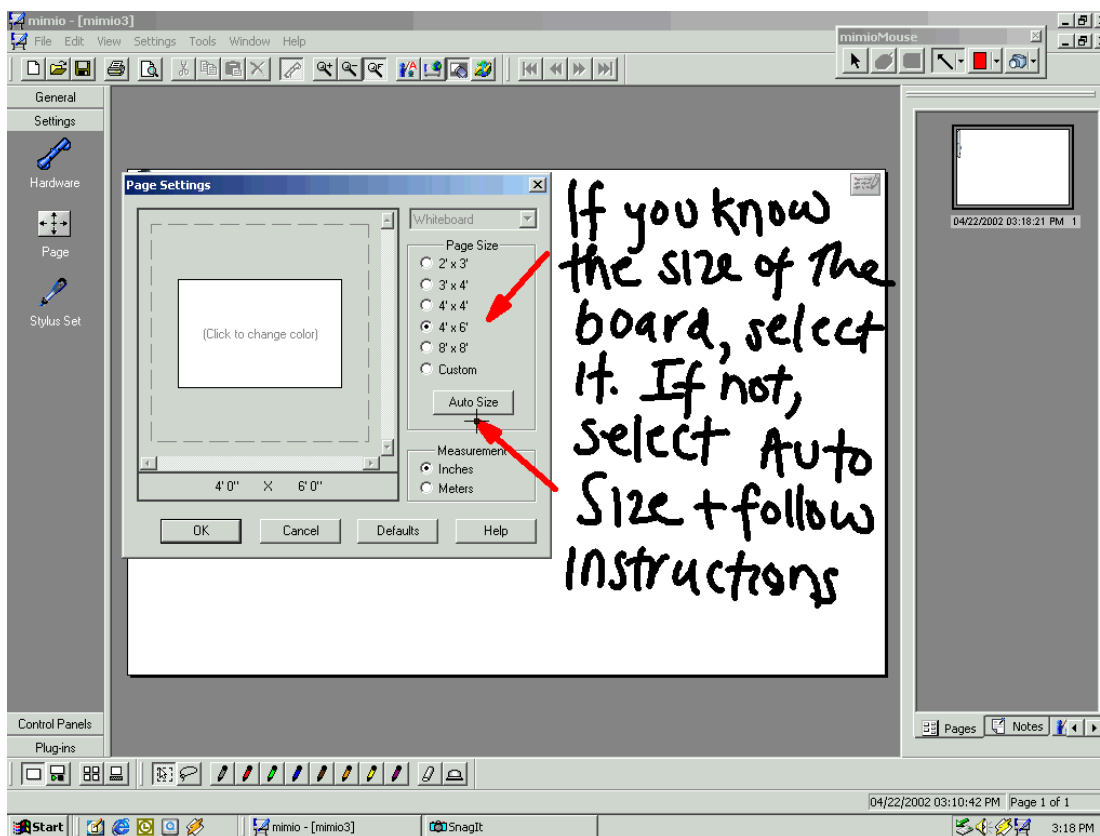
Export Image: You can specify the dimensions/resolution for exporting mimio files as images (bmp, .emf, .wmf.) and also select the file format for copying and pasting (and drag ‘n drop) content from mimio into other applications.

Options: You can customize your Settings (enable audio feedback, connect to last session), Formatting (date and time) and File Saving Features (save recovery files, auto save). These functions are designed to ensure that you will always save and capture your data without any chance of accidentally losing the information on the board.

Getting Started (cont'd.)

Settings - Page

The mimio software will automatically capture all notes, diagrams and drawings on any hard, flat, smooth surface up to a 4' x 8' (1.2m x 2.4m) area in size. If you would like to adjust the size of the virtual whiteboard in the software so that it proportionally matches the actual whiteboard in use, simply go to Settings-Page.



Under **Settings-Page** (located on the main menu bar at the top or at the far left), if you know the size of your board, simply check the appropriate size and click **OK**.

If you don't know the size of your board click **Auto Size** and click with any mimio stylus pen in the lower right-hand corner of the whiteboard. The mimio software automatically sizes to the board you are using.

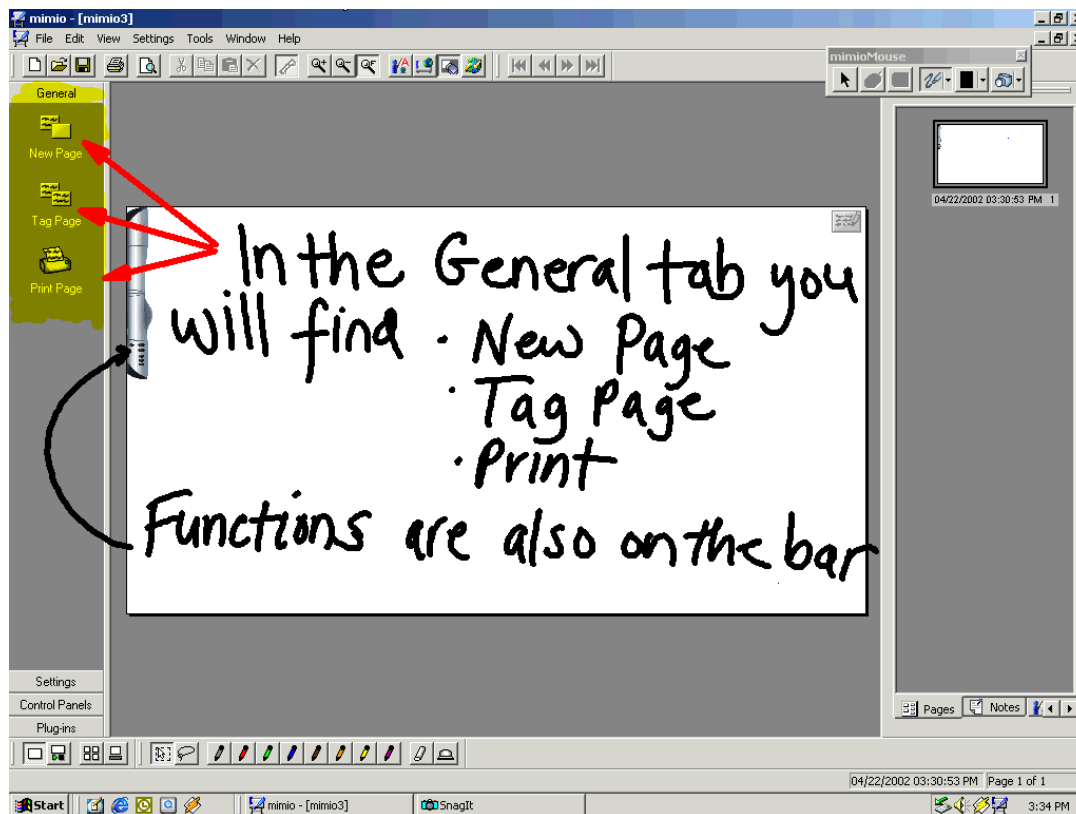
You can also custom size your board by checking the **Custom** box and adjusting the sliders at the side and bottom of the graphic box.

Note: If your whiteboard is portrait oriented (meaning it is taller but not wider than 4' (1.2m), remember to go to **Page-Hardware** and select the horizontal mimio bar orientation.

Working with mimio

General

Some of the most frequently used mimio features/functions are accessible from the “**General**” tab on the left-hand side of the mimio software. These functions are also located on the Xi capture bar (and on the mimioBoard panel) so you can access them directly from the whiteboard or at the computer.



New Page: mimio saves a thumbnail of the current board and adds a new blank board to your recorded whiteboard session. After pressing **New Page**, the actual whiteboard can be erased with either a regular board eraser or mimio eraser. **Note:** after selecting **New Page**, the previous page cannot be edited from the whiteboard but can be edited in the software. (See p.22).

Tag Page: mimio creates a thumbnail of the current board and carries that same board content/concept to a new page allowing you to continue to add to it. Themes, ideas, concepts and/or problems can continue to be developed without having to start from scratch.

NOTE: Pages created by **New Page** and **Tag Page** are individually numbered and are selectable by number (single or in series) for purposes of printing, exporting to HTML and/or emailing.

Print Page: if a printer is installed, mimio will print the current page to the default printer.

The following options are located only on the physical mimio Xi capture bar and mimioBoard:

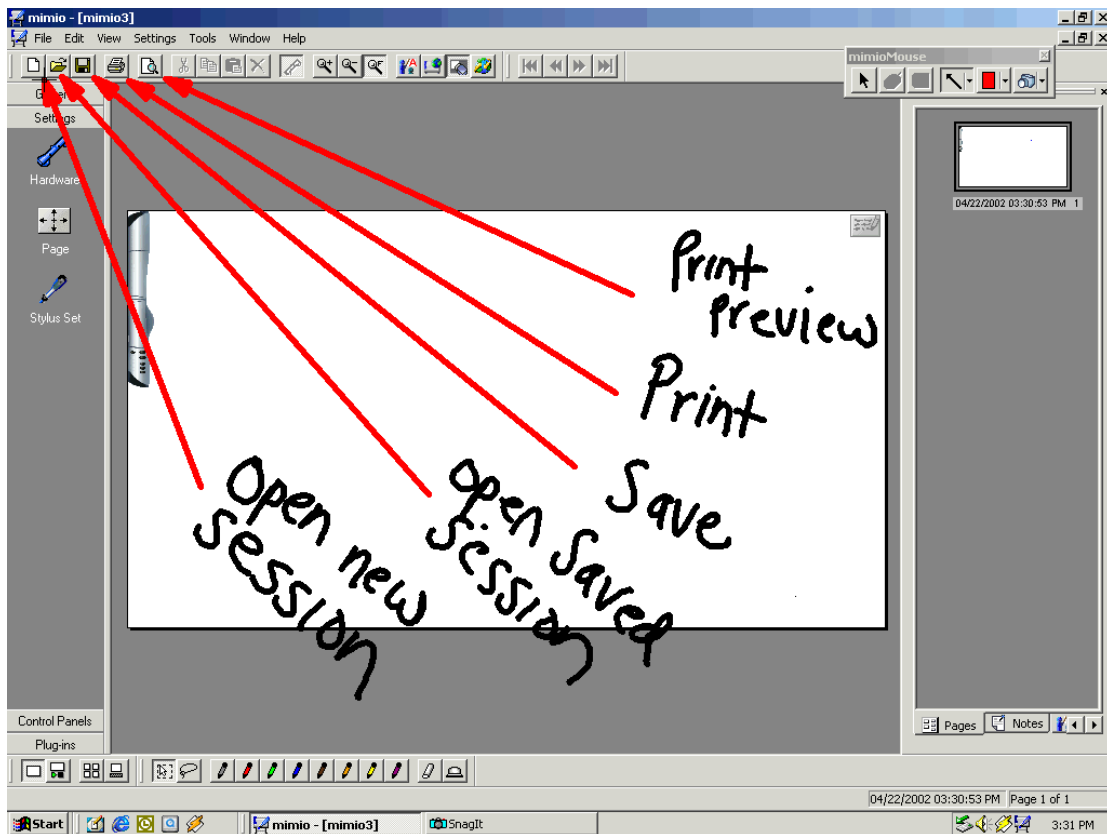
Maximize Board: maximizes / minimizes / restores the mimio application window on your computer screen.

Activate Control Panel: Activates installed Control Panels (e.g., mimioMouse, talking calculator). Your mimio software CD has instructions on downloading and using control panels. (Also see page 11).

Working with mimio (cont'd.)

Navigating the mimio software

You will find that mimio Xi is easy to use and requires no special computer knowledge.



The buttons to the right of **Print Preview**: **Cut**, **Copy**, **Paste** and **Delete** become active when you highlight text in the Notes Tab View or in the optional writingRecognition & classRoom Tab Views.

The buttons to the right of the **Capture bar** toolbar button allow you to select an area of the whiteboard and **Zoom in**, **Zoom out** and return to **Full page**.

The next set of buttons activate the following mimio software plug-ins if installed: **mimio boardCast**, **mimio classRoom**, and **mimio writingRecognition** (See p.27). These plug-ins can also be accessed under the “**Plug-ins**” tab on the left hand mimio bar of the software. To install optional software plug-ins, an individual serial number must be purchased from a reseller, or directly from www.mimio.com/store.

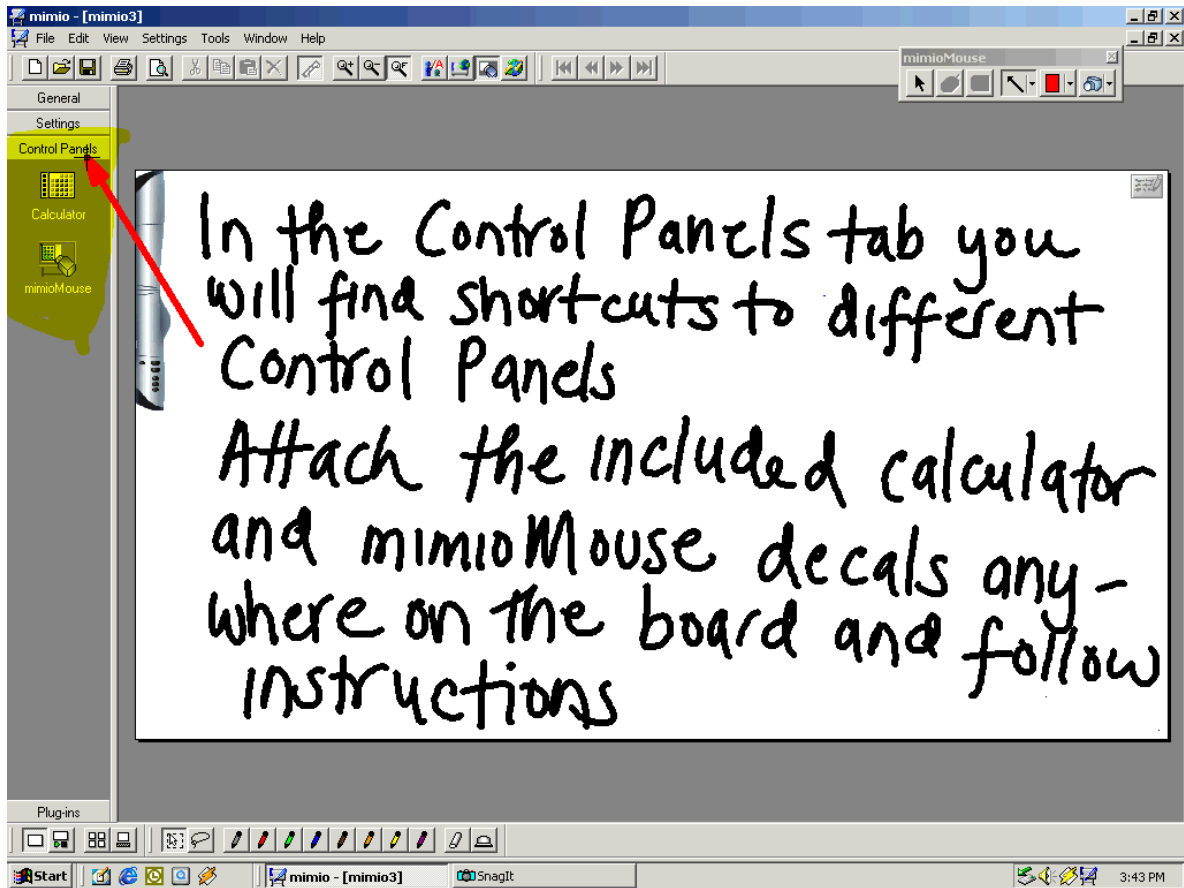
Other standard mimio software plug-ins are also automatically installed with the mimio application: **mimioMouse**, **mimioMeetings** and **NetMeeting** (See p. 26).

Note: Make sure that you have the latest version of mimio software loaded on your computer. If you are not sure what version you currently have, go to Help / Software Updates from the main menu to confirm what version you have and then compare that with the latest version on www.mimio.com/software.

Working with mimio (cont'd.)

Control Panels

The mimio software CD includes template files and instructions for using 2 Control Panels: mimioMouse and Talking Calculator. Electrostatic decals may have been included with your Xi. These Control Panels permit mimio and other computer functions to be operated directly from the whiteboard instead of from the PC.



To calibrate and activate Control Panels, place one or both of the Control Panels anywhere on the mimio whiteboard. Then, push the bottom button located on the mimio Xi capture bar (or under Control Panels in the software) until the Control Panel you wish to activate appears on the screen. Then follow the audio and visual instructions using one of the stylus pens. You may want to place the plastic mimioMouse insert into the stylus for this exercise to avoid marking the Control Panel with ink.

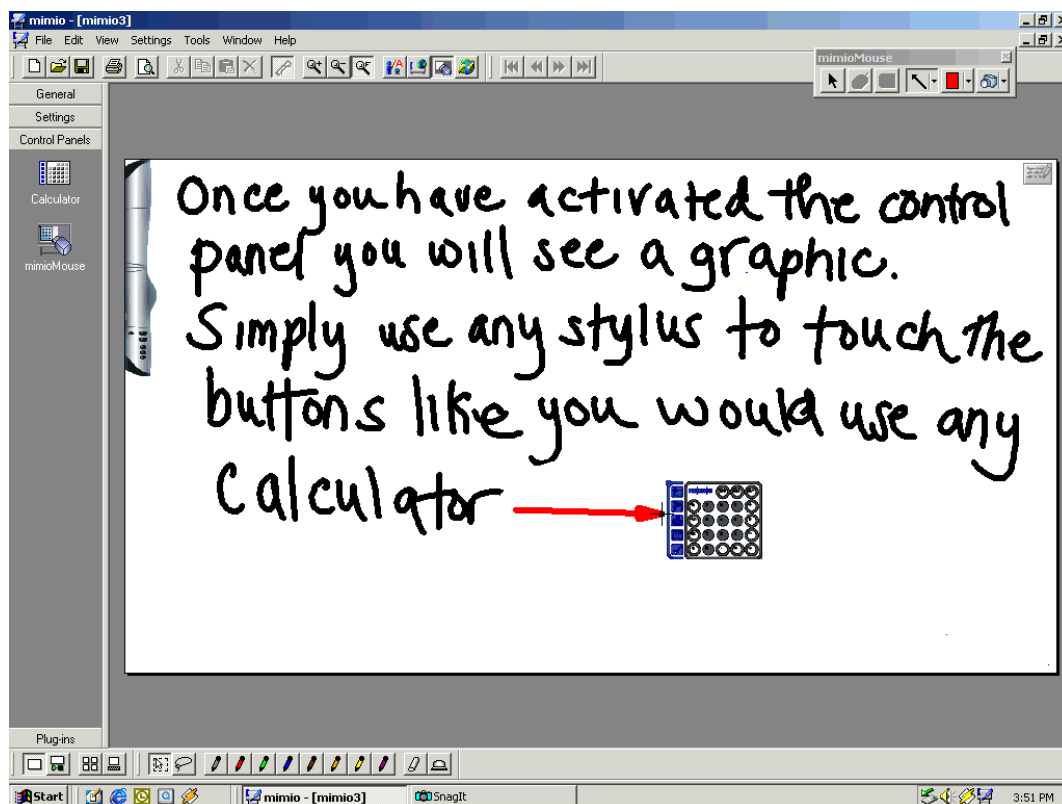
There is a Control Panel API developer's kit available on <http://www.mimio.com/software>, providing all the software tools and information required to design and program custom Control Panels which can be installed with the mimio software application. You can in effect develop interactive "hot keys" for specific functions on your PC controlled from mimio Xi.

NOTE: Computer-programming skills(C++ & Visual Basic) are required in order to use the Control Panel API.

Working with mimio (cont'd.)

Control Panels

Once activated your screen will show the panel(s) that you have installed.



At this point, all of the features and functionality of the Talking Calculator and mimioMouse control panel can be accessed from the location where you have placed the Control Panel. Note: If you are working on a large whiteboard, we recommend placing the Calculator decal on the far right-hand side of the board because it includes a full set of the Xi bar control buttons, eliminating the need to come back to the bar or computer to activate these commands.

The Calculator Control Panel activates a talking calculator function. For example, press the number 5; then the multiplication button; then number 5 again; and then the equal sign on the Control Panel ($5 \times 5 =$).... the calculator will do the rest; activating the calculator application on your PC desktop and voicing the entries, commands, and results through the PC sound system.

The mimioMouse Control Panel (for use when the PC desktop is projected onto all or part of the whiteboard) can be used to control mimioMouse calibration and also provides navigation of the cursor and return key within applications, access to the floating keyboard, mark-up capabilities and archiving. (Please refer to p.28 for more information in mimioMouse) **NOTE: by initiating calibration of the mimioMouse Control Panel from the Xi bar button and then touching the calibration button on the Control Panel, it is possible to obtain at the whiteboard 100% control of all PC functions using mimioMouse without making a single visit to your PC keyboard.**

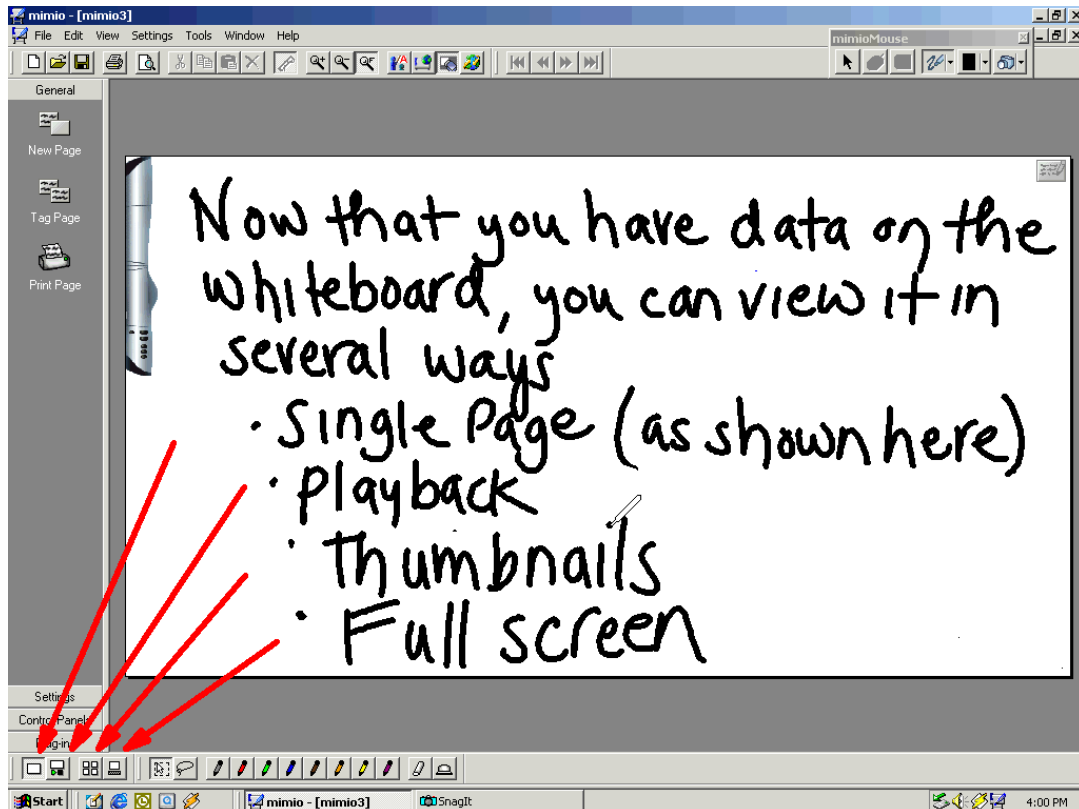
To de-activate Control Panels, click on the icon in the "Control Panels" tab of the mimio software or press the bottom button on the capture bar until the required Control Panel icon appears and its name is voiced. Wait 3 seconds and a voice prompt will confirm that Control Panel is de-activated.

Working with mimio (cont'd.)

Views

You can **customize** the mimio user interface by clicking on **Views** in the mimio software and selecting the various options.

Note: The default Views setting displays all the options under the Views menu except “Capture Page” (which maintains a constant thumbnail display of the active/last page).

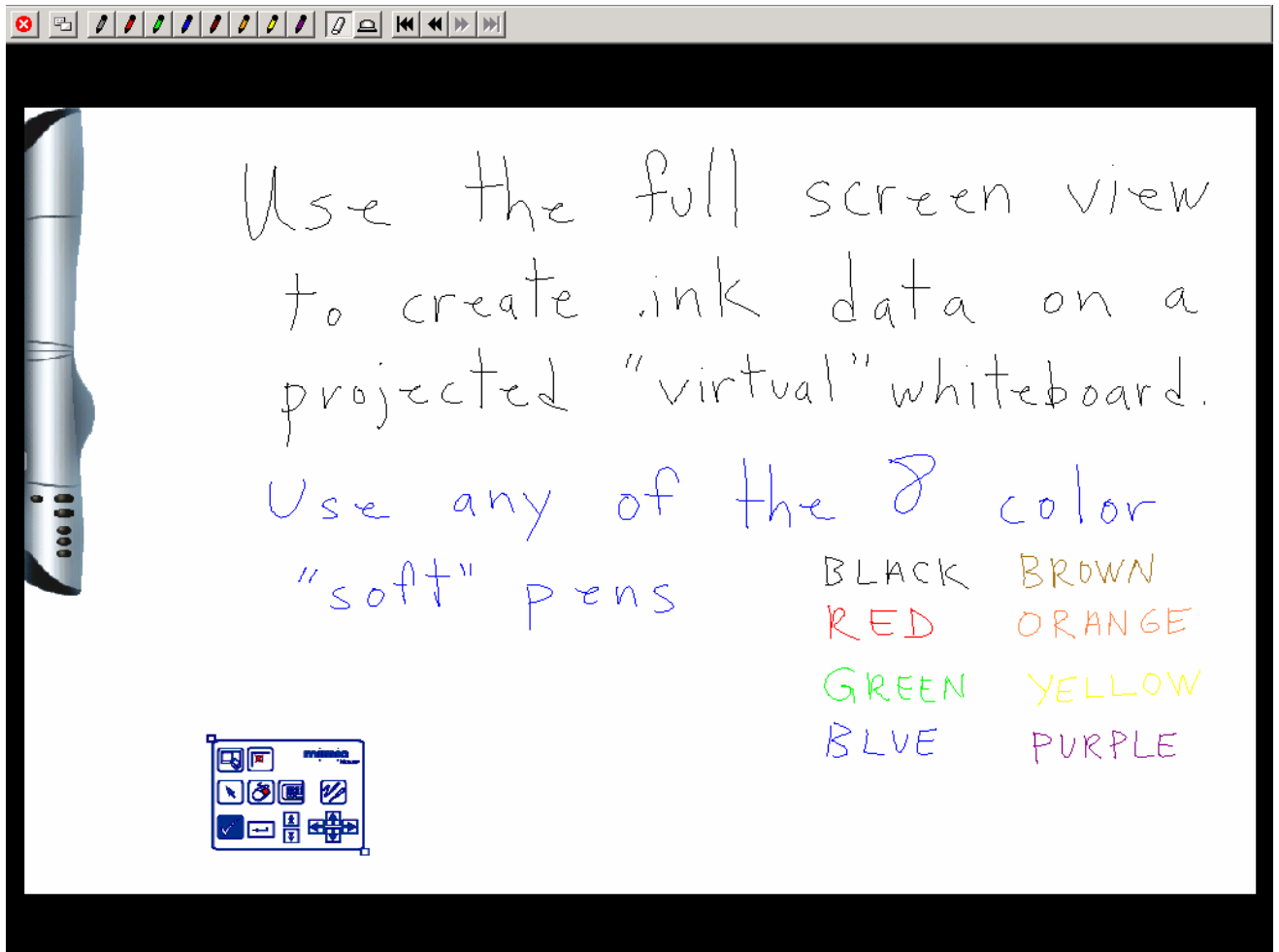


There are also 4 **Display** toolbar buttons located in the lower left-hand corner of the mimio application

- **Single board** – displays current capture page plus all tools and functions.
- **Player** - will play back your session stroke-by-stroke. You can increase/decrease playback speed and also choose to continually loop the playback in the **Settings-Playback-Options** dialog box. *NOTE: You can also right click on the New Page, Tag Page and Notes icons that appear in the upper right hand corner of the mimio whiteboard displayed in Playback View to insert or remove Tag Pages and New Pages at any point of the “timeline” of the mimio ink data file.*
- **Thumbnails** - every page you have created will be displayed on one screen with a date and time stamp. This is useful when reviewing content or creating a training record. Click on any thumbnail and that page will be displayed as the main window. The pen set at the bottom of the mimio application allows you or others to pick up a **pen** or **eraser** from the toolbar and append new “ink” data to the captured data or edit any pages followed by a New Page. Note: pages cannot be re-ordered.
- **Full screen** – fills the PC display with the mimio virtual whiteboard with no application icons or interface except a toolbar providing “soft” pens, erasers and controls. See following page.

Working with mimio (cont'd.)

Full screen mode: Virtual Whiteboard



Full Screen Display is the ideal mimio application display mode for projection of the whiteboard onto a large screen for lecture theatre or auditorium audiences, capturing and displaying whiteboard notes in real time.

When operating in **mimioMouse** mode (see p.28) Full Screen display mode will permit you to select with your mimioMouse any of the 8 color soft pens or the wide and narrow eraser tools and write or erase directly to the projected mimio whiteboard image interactively. The mimio .ink file will be created as if you were using stylus pens with real markers but without putting real marker ink on the board. Additional controls on the **Full Screen Navigation Toolbar** allow you to clear the board to start a New Page, scroll Forward and Backwards through Tagged Pages or jump to the beginning or end pages of the file.

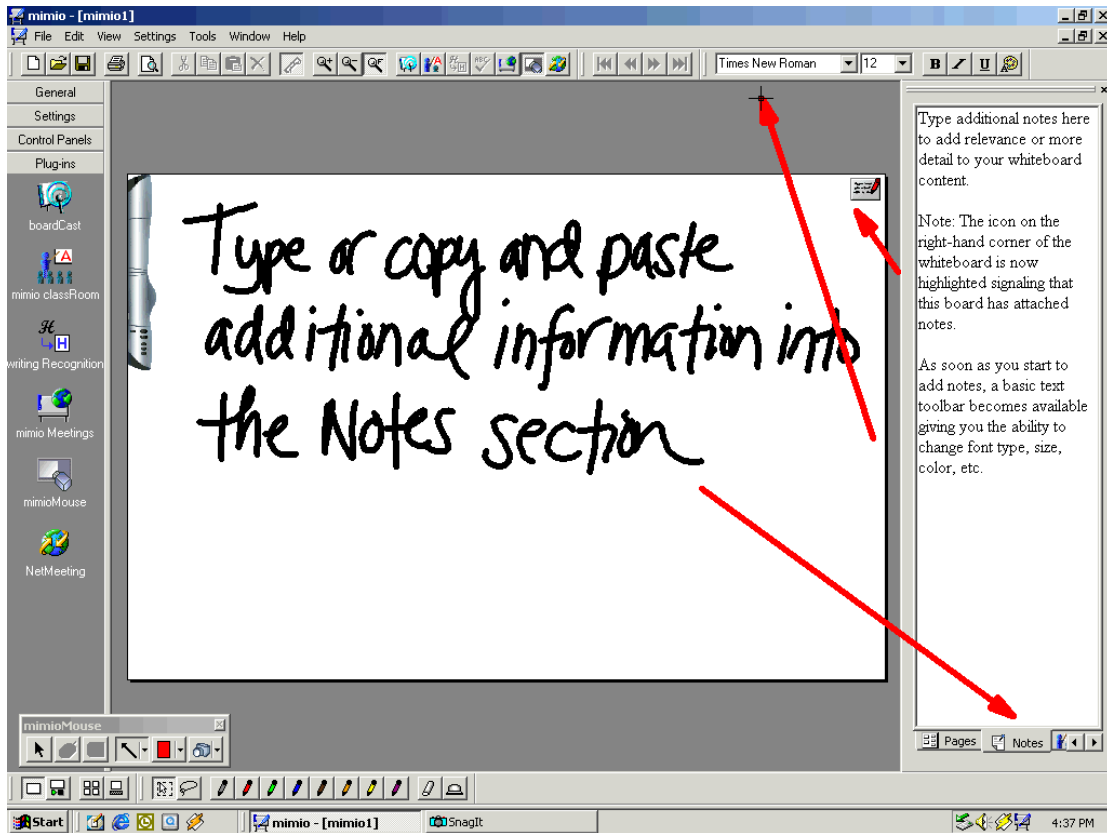
To exit Full Screen display and return to the standard mimio application display just click on the red circle with "X".

Note: If you have been using a soft pen, remember after exiting Full Screen Display to press the cursor icon button in the standard application tool bar so that your mimioMouse does not write unintended "ink".

Working with mimio (cont'd.)

Notes Tab

While the mimio software accurately captures everything that is written and drawn on the mimio enabled board, other parts of the lesson or discussion may not have been recorded. In the “Notes” field, additional information can be entered (typed) or copied from another text sources and saved with the mimio page displayed.



- Click on the **Notes** tab in the Tabbed Views section (located in the lower right-hand of the software) and start typing (or copy and paste) information into the Notes area.
- As soon as you begin to add notes, standard text formatting toolbar icons become active in the main mimio software, enabling you to change the font type, size, color, etc.
- You will also notice that the marker icon in the lower left-hand corner of the virtual whiteboard is now “active” (colored red) – indicating that the board has associated notes (a great visual reminder when reviewing an .ink file at a later time).

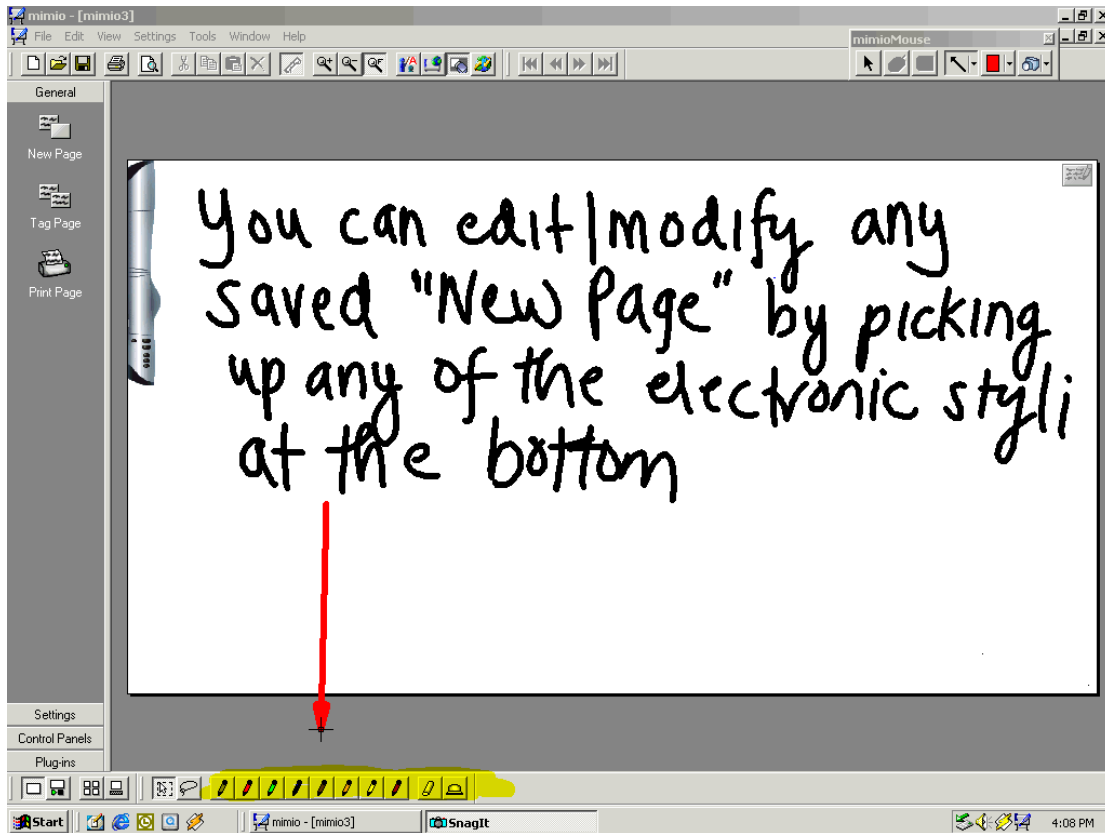
Any mimio Ink files shared and viewed in the mimio software application will retain and display associated notes. The notes from the Notes tab can also be included when mimio Ink file pages are Printed or when they are exported to HTML.

NOTE: To use the Notes feature, make sure that **Tabbed Views** and **Show Page Information** is checked under **Views** (See p. 18).

Working with mimio (cont'd.)

Editing Pages

mimio software faithfully replicates the reality of the whiteboard you are using. Once you have changed or erased the writing on the board, you cannot return in the software to a “Saved” or “Tagged” page and use a mimio stylus pen to add to or edit the Ink data. However, mimio pages can be edited in either of 2 ways:



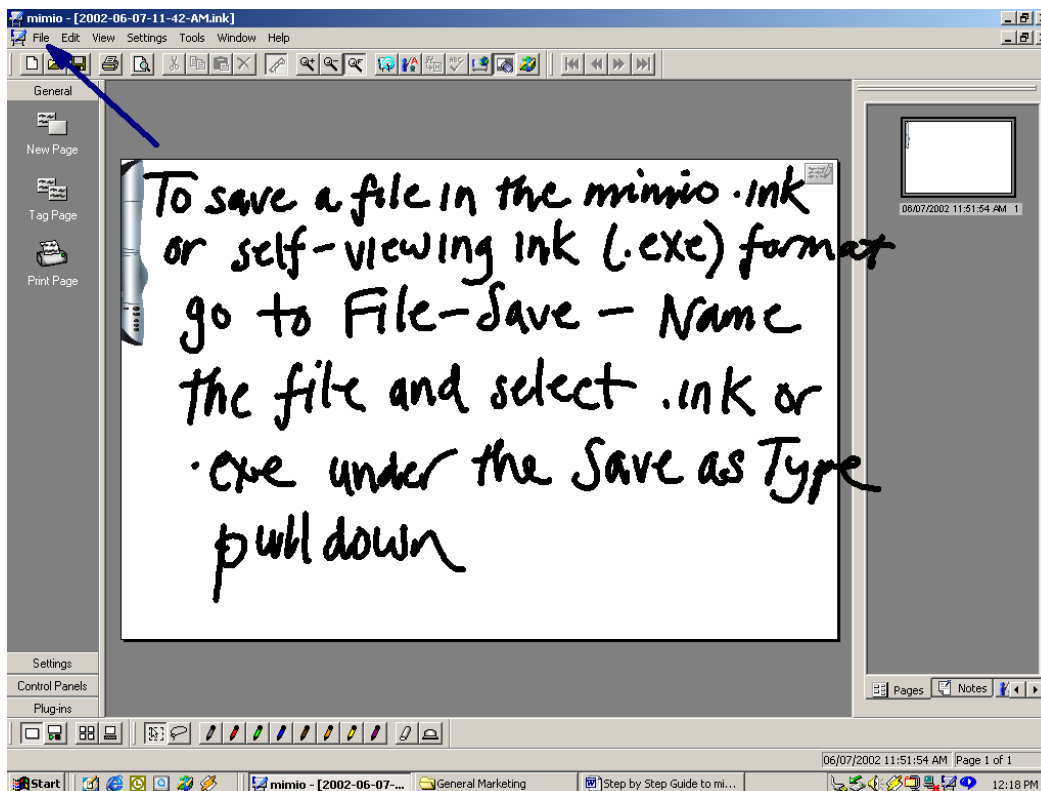
Only if the page you wish to edit is followed by a New Page, you can use your mouse to select one of the eight “soft” stylus or two “soft” eraser toolbar buttons located in the Styli and Erasers toolbar, to edit or add to the ink data on the page.

You can add additional data to any mimio Ink file by simply opening the file on your PC with the mimio Xi or any other mimio capture device (mimioBoard, mimio flipChart, mimio classic, mimio for Mac) connected and writing with any mimio stylus pen.

Working with mimio (cont'd.)

Saving mimio files

Data captured on the whiteboard with mimio Xi can be saved in the mimio native format (.ink) or as a Self-Viewing Ink (.exe) files. Go to **File-Save As** and select either the **mimio Ink (*.ink)** or **Self Viewing Ink (*.exe)** file format from the Save as Type pull down menu.



There are a few benefits to saving and viewing files in the native mimio Ink format:

1. The mimio software is a free download (www.mimio.com/software). Anyone can download and install the mimio software to view mimio Ink files.
2. In the mimio Ink format, all features and functionality of the mimio session data are accessible, including added keyboard Notes & Recognized text as well as playback, page thumbnails, etc.
3. Recipients can also edit the session notes (add or remove Tag or New pages; add ink to pages from soft pens etc.) - and if they have a mimio device, they can further develop and add data and pages to the session. (See p.20)
4. **mimio Ink** files are rendered as vector data, which requires less memory and storage space than bitmap or even jpeg files and therefore easier to email, share & archive.

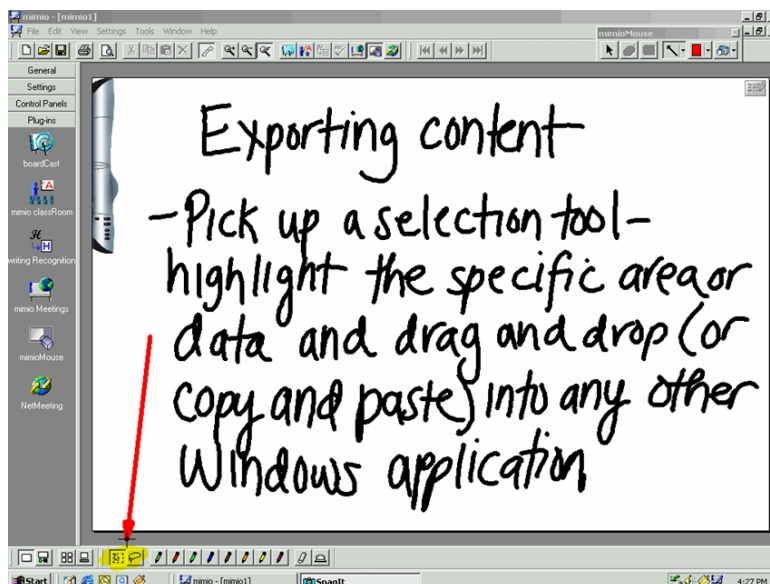
The **Self Viewing Ink** file format combines a viewing application with your ink data in a single executable file that enables the mimio data to be viewed with Page thumbnails, played back and pages printed on any PC without installation of the mimio software application.

*Note: if a recipient of a self-viewing ink file does have the mimio software loaded, the file will automatically open up in the mimio application. **CAUTION: In this age of computer viruses, it is recommended that any Self Viewing Ink executable (.exe) file be Zipped before sending, in order to make sure it clears the anti-virus firewalls of the receiver's network.***

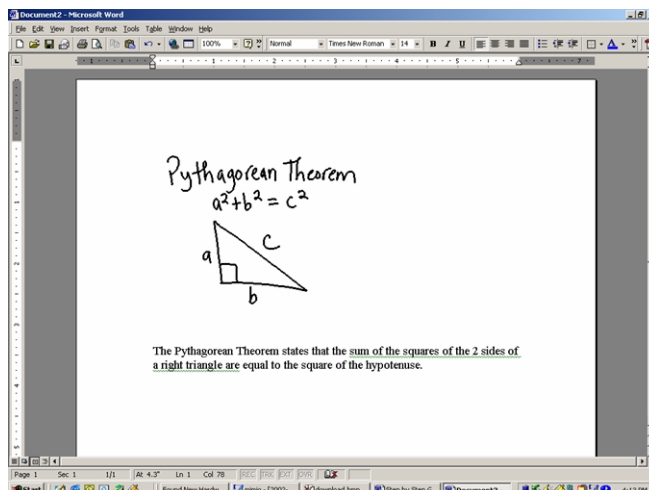
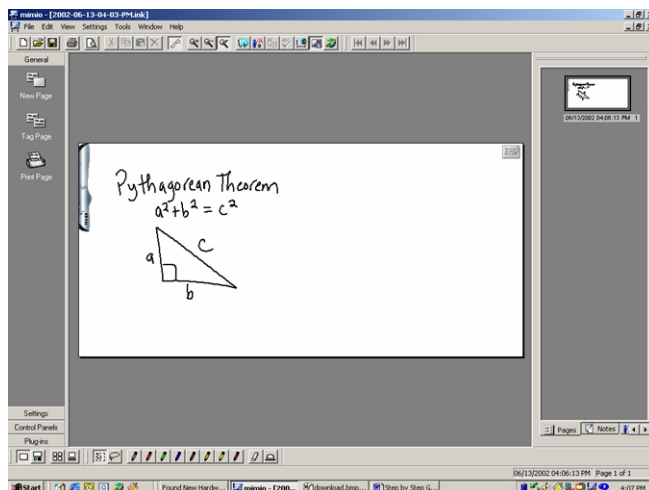
Working with mimio (cont'd.)

Copy and Paste

Data captured from the whiteboard can also be copied and pasted (or dragged and dropped) into any Windows application such as Microsoft Word, PowerPoint, and Excel or directly into Outlook.



Open up the application into which you want to copy mimio data. Then click on one of the selection tools located on the Styli and Erasers tool bar, highlight the area you want to copy and then Copy and Paste (or Drag and Drop) it into the application.



Because mimio Ink is vector data, the copied mimio images are scaleable and can be enlarged or reduced without sacrificing image or print quality.

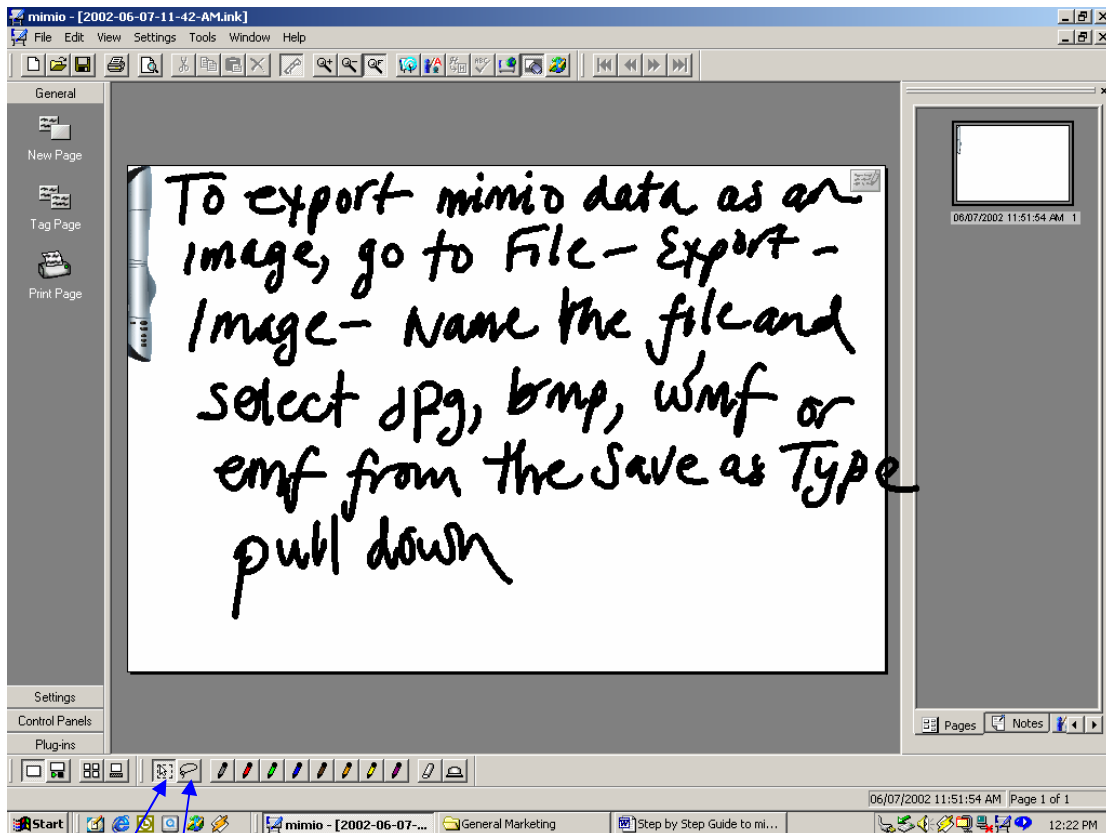
Creating PDF Files from mimio Data – whiteboard data is not typically the final document, so the best way to produce “final” PDF’s incorporating mimio Ink data is to drag & drop or copy/paste the data into Word or similar document and distill that document as a PDF.

NOTE: Under *Settings–Export Image* you can set the pixel resolution for Export Image files and the dimensions and other specifications for Metafile data. You can select under Drag and Drop Files from the following formats: Windows Metafile (.wmf), Enhanced Metafile (.emf), Windows Bitmap (.bmp) and JPEG Bitmap (.jpg).

Working with mimio (cont'd.)

Exporting data as an image

To enable easy integration into other document formats or use with other applications you can **Export** mimio data to **Image** (.jpg, .bmp, .wmf, .emf), **HTML**, **Scalable Vector Graphic** (.svg), or **Encapsulated PostScript** (.eps) file formats.



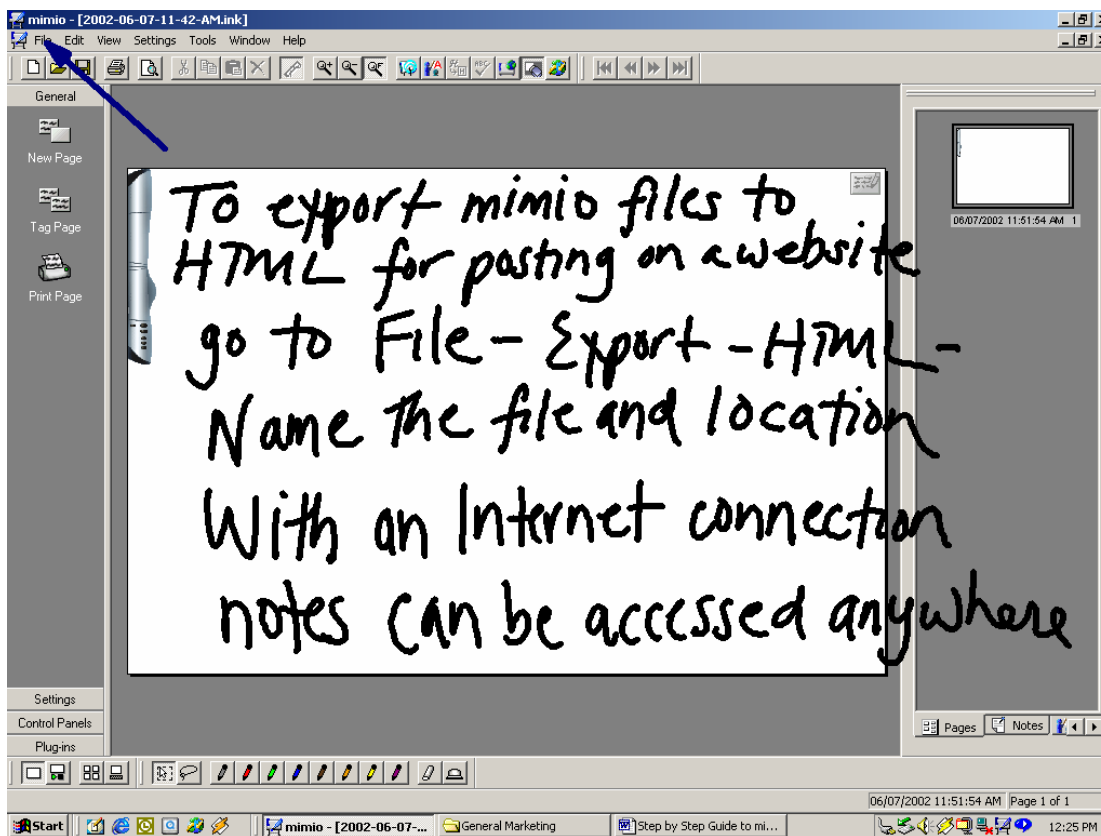
You can export an entire board by clicking on **File-Export-Image** or just a section of it by using the regular/irregular Selection tools located on the Styli and Erasers toolbar.

Depending on the type of file format to which you are exporting, you have the option to specify resolution and other attributes of the mimio data in the exported format.

Working with mimio (cont'd.)

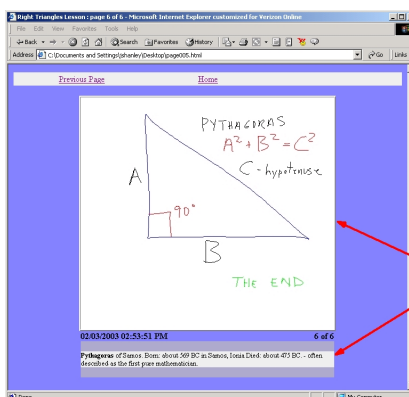
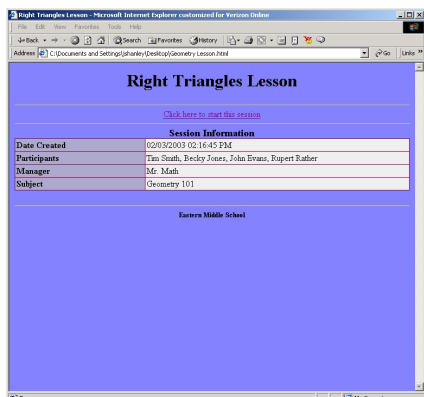
Exporting data as HTML

Data can be exported to HTML and posted to a website in seconds, allowing easy access for students or others to whiteboard notes from any Internet web browser anywhere, anytime.



Simply go to **File-Export-HTML**, name the file and location where you would like to save it and mimio automatically renders the mimio Ink pages in HTML for instant posting or uploading to web pages. Numbered mimio Ink pages can be exported by selected page numbers, or as an entire session with all pages, generating a sequenced “storyboard” of the whiteboard notes viewable in any web browser. Colleagues, clients, customers and students benefit from being able to view your mimio whiteboard notes - wherever and whenever – with a simple Internet connection.

Note: If you have added notes in the Notes tab (See p. 20), these notes can be selected in HTML Export-Set-up to also appear, along with Session Properties data, in exported HTML page

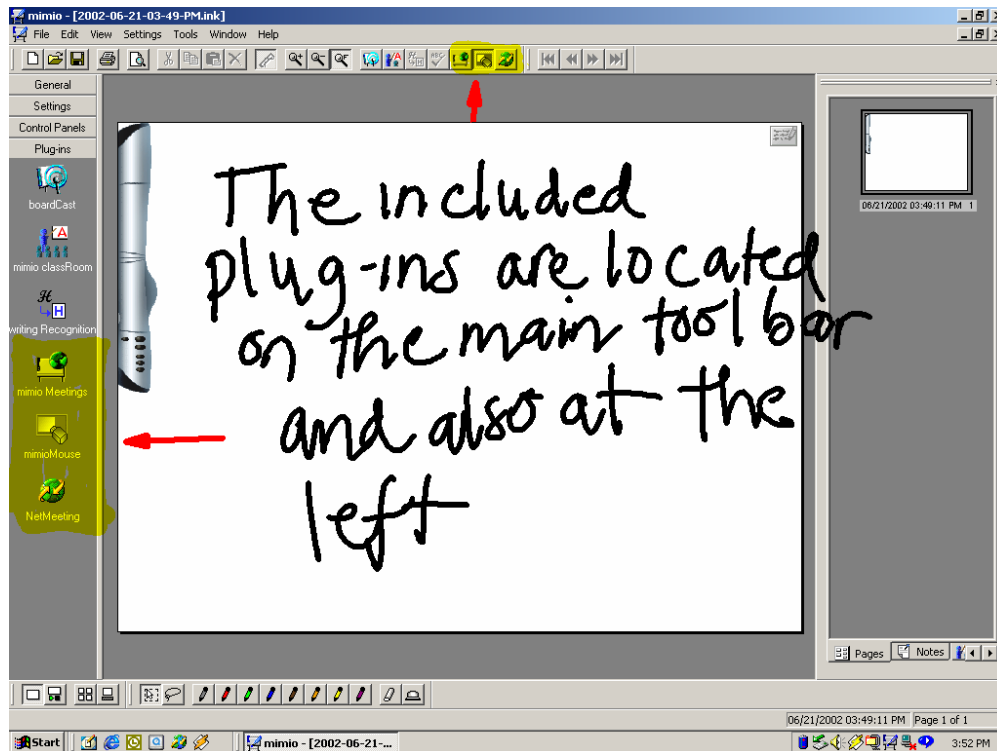


Whiteboard notes
Keyboard notes

Working with mimio (cont'd.)

Plug-ins

mimio software is installed with **plug-ins** which extend functions and links to other applications.



mimioMeetings – clicking on the mimioMeetings plug-in icon when connected to the internet will open your web browser to <http://www.mimio.com/meetings/index.html> where you will find links to Glance.net and other third party online conferencing solutions which will permit shared viewing of your mimio whiteboard over the internet. As a shared application with these third party solutions, mimio is the ideal tool to bring a real whiteboard into the view of all meeting, training, or classroom participants regardless of location.

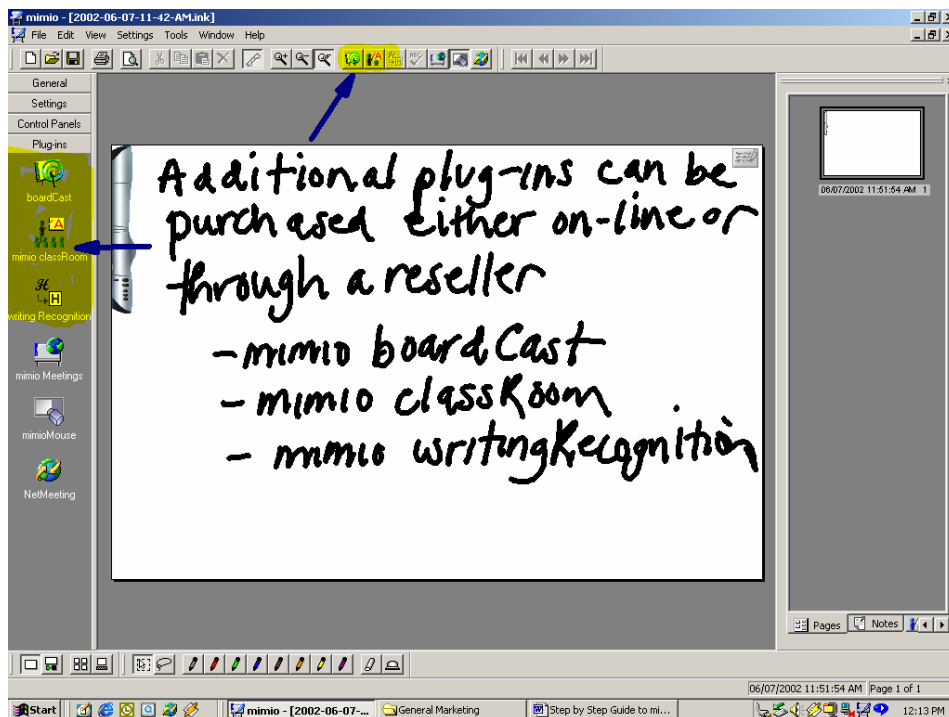
mimioMouse – this built-in feature enables you to turn your mimioBoard into an **interactive touchscreen**. Simply connect mimio Xi and a multi-media projector to your PC and project the PC desktop onto any area of your whiteboard (mimioMouse can support an 80” diagonal display area). Place the plastic mimioMouse insert into any mimio stylus; initiate mimioMouse calibration (by clicking on the mimioMouse plug-in icon of the software or from the mimioMouse Control Panel) and use the stylus like a cordless mouse to click, double click, drag and drop and otherwise control your PC from the whiteboard. Browse the Internet, scroll through a PowerPoint presentations or open a spreadsheet. mimioMouse includes a floating palette of mark-up and screen capture tools which can be accessed either from the onscreen toolbar or the mimioMouse control panel. (See p. 28)

NetMeeting – this plug-in permits mimio Xi to work seamlessly with the Microsoft NetMeeting network conferencing solution that is a part of Win 98/200/XP. Any team members, clients or students connected to your location over the internet via NetMeeting can see the actual whiteboard notes written on your mimio enabled whiteboard in real time in the NetMeeting “virtual” whiteboard window of NetMeeting.

Working with mimio (cont'd.)

Optional Plug-ins

The features of the core mimio software application can be further extended by optional software **plug-ins** (writingRecognition, boardCast and classRoom). These **plug-ins** work with the ink data that you are capturing to enable additional functions or create new data types. They can be purchased from Authorized mimio Resellers. North American customers can also purchase from www.mimio.com/software.



Optional mimio software plug-ins:

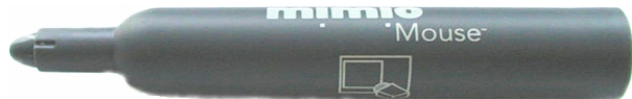
- **mimio writingRecognition** – converts handwritten notes into ready-to-edit text. Recognizes print and cursive, numbers (including basic operation symbols but not scientific notation), letters and punctuation, and requires no training! *Note: writingRecognition works with English language writing only.* Learn more at <http://www.mimio.com/meet/writingrecognition/>.
- **mimio boardCast** – records audio (your voice) in real time with your whiteboard notes to create internet streaming multi-media content which can be archived for on-demand viewing through any Real Player from a web server (Real Server enabled). The highly compact boardCast files can also be recorded directly to hard disk and redistributed by conventional file transfer methods. Learn more at <http://www.mimio.com/meet/boardcast/>.
- **mimio classRoom** – permits network sharing of whiteboard notes with multiple PCs (up to 30) in real time over your existing network. Provides access password security and one-way chat feedback for students or trainees to the Instructor. Ideal for classrooms, labs and training centers. Learn more at <http://www.mimio.com/meet/classroom/>.

mimioMouse

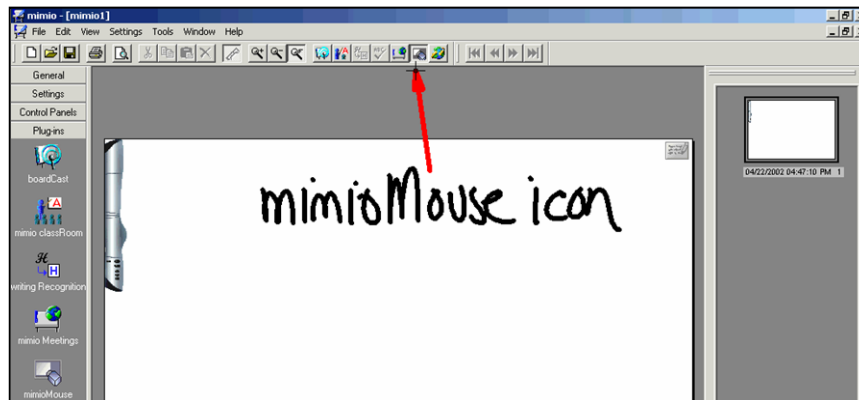
Getting Started in Interactive Mode

The built-in **mimioMouse** feature enables mimio Xi to turn any area of your whiteboard into an **interactive touch screen (also referred to as an Interactive Whiteboard)** – allowing you to control and annotate your PC desktop (Windows) and applications (Word, PowerPoint, web browser) directly from the whiteboard.

To activate mimioMouse, first, connect mimio Xi and a data projector to your PC; then project your desktop onto the whiteboard. The aspect ratio of your projected image will allow a desktop display up to 4' (1.2m) x 5' 4" (1.6m) or approx. 80" diagonal. Maintain a gap of at least 6" between the projected image and the mimio Xi. Next, replace the dry-erase marker in one of the stylus pens with the included **plastic mimioMouse insert**.

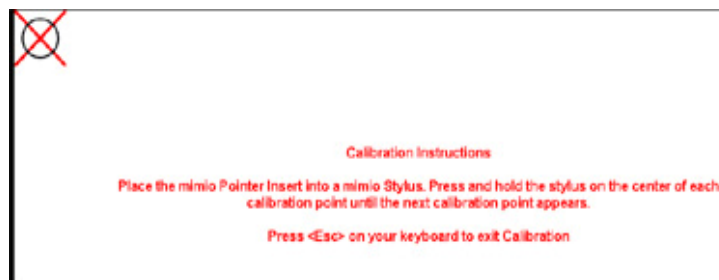


Next, click on the mimioMouse icon located on the upper tool bar, or in **Tools – mimioMouse – Calibrate** or under **Plug-Ins-mimioMouse** (on the far left-hand side). You can also initiate calibration from the mimioMouse Control Panel if activated.



The projected screen image will go white and a target point will appear in the top left-hand corner. There are 9 points in total with the next point appearing once you have pressed the pen on the previous target. Ensure that you hit the target (the center of the “X”) as **precisely** as possible and **for optimum calibration accuracy hold the pen at a 90-degree angle to the board surface.**

***NOTE:** Whichever Stylus Pen is used for the calibration of mimioMouse will become a “cordless mouse”. It will no longer be “seen” by the mimio system as a writing marker. The other stylus pen can be used to continue writing and capturing notes anywhere on the whiteboard (including the mimioMouse projection area).*



After completing the final calibration point, the PC desktop will reappear. You are now ready to use **mimioMouse**. **Note:** If the projector or whiteboard moves during or after calibration, mimioMouse calibration will lose accuracy. If this happens, simply restart the calibration process from any of the menus or icons described above.

mimioMouse (cont'd.)

Interactive Mode Features

The mimioMouse feature enables you to do 3 basic tasks:

- Use the mimio stylus like a cordless mouse to control your projected desktop and applications (e.g., scroll through PowerPoint slides, surf websites, navigate interactive CDs).
- Mark-up any projected image (PowerPoint slides, Word documents, websites, etc.) and save or print those annotated changes.
- Use the mimioMouse interactive feature AND have mimio Xi capturing notes with one of the other stylus pens simultaneously.

Directly on the whiteboard, click the Windows **Start button** on your **Taskbar** and you will see that the mimio stylus now acts like a mouse. The first press of the stylus on the board is the equivalent of a “**left mouse click**”. Press and hold down the stylus for a second and you activate the equivalent of a “**right mouse click**”.

After calibrating mimioMouse, you will notice a floating toolbar appears in the top right hand corner. You can move this by pressing the stylus on the blue title bar area of the mimioMouse bar, holding it down and **dragging** it anywhere on the board.



The mimioMouse Toolbar has 6 buttons.

1. **Cursor** - this becomes inactive once you select one of the 3 mark-up/annotation buttons or capture/print button on the right side. Press this to return to mimioMouse mode.
2. **Right Click** - press this button and the next touch of the stylus on the board changes to **right click** instead of **left click**.
3. **Keyboard** - press this button to activate the virtual keyboard to input data direct into any application or text field from the board. **Note:** If another dialog box is open on your desktop when you press the keyboard button, only an icon in the lower right Windows task bar may appear. In that case, click on that keyboard icon in the task bar to display the keyboard fully on the desktop.



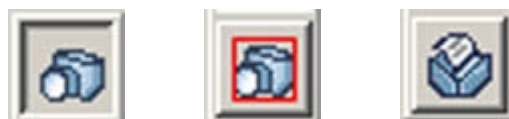
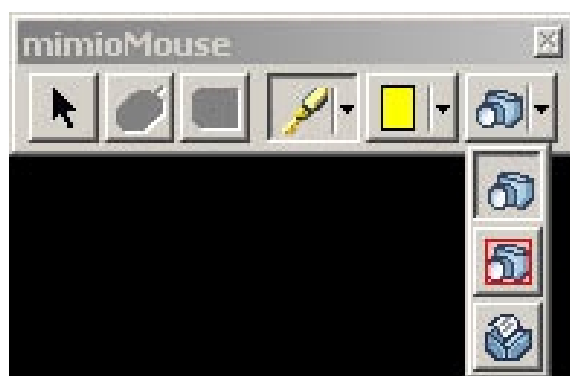
MimioMouse (cont'd.)

Mark-up and Annotation

In addition to using mimioMouse like a cordless mouse to control your desktop and applications, this feature also allows you to mark-up projected images (documents, applications, websites) and save or print those annotated pages or images.



4. **Tools** - press this button to bring up available tools, which include a **pen, highlighter, eraser, arrow, borders and shading blocks**. When you select **Tools** you can **annotate** over documents from any open program (PowerPoint, Word, websites, etc.), windows, dialogs, or your entire active PC desktop. You can also **Save or Print** your mark-ups (see **screen capture** below). In **mark-up mode** your PC screen is “frozen” and you will not be able to operate running applications (ie. click to next PowerPoint slide) or switch between applications or operate any other Windows commands until you **exit** the mark-up mode, at which time all annotations will disappear. To **exit** mark-up mode press the mimioMouse stylus on the cursor arrow and select “**OK**” to “**Remove mark-ups?**”.
5. **Palette** - change the **color properties** and **line thickness** of the tool currently used.
6. **Screen Capture** - this button gives you 3 options for saving a screen capture of your **annotations and mark-ups**.



1

2

3

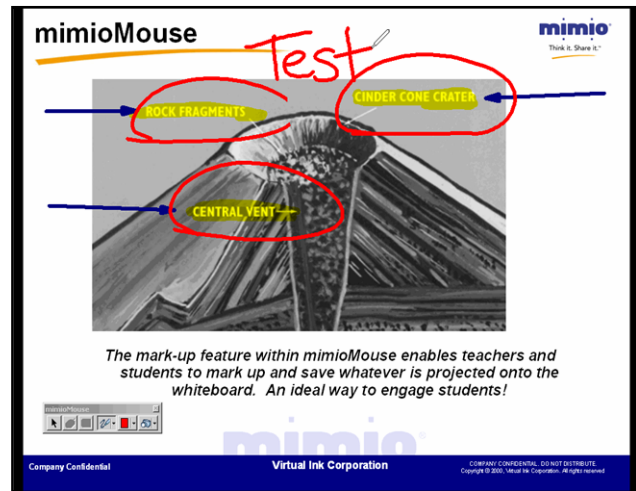
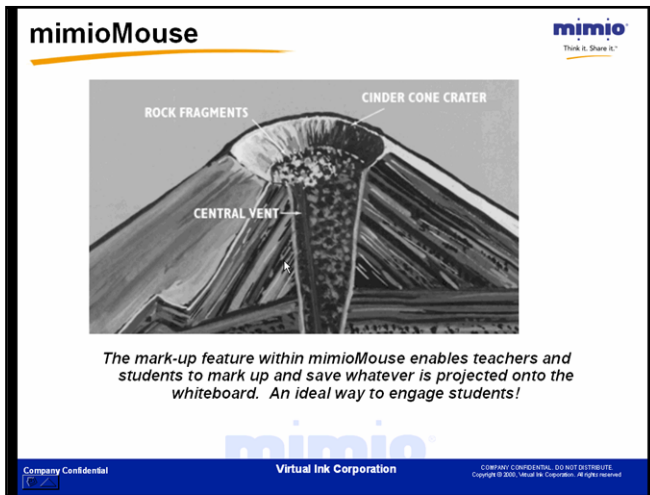
1. First button takes a screen shot of your entire desktop and will ask you where you want to save it. You can “set” the destination of all future saved files by checking “Use this directory without asking”
2. Second button takes a screen shot of a selected area using a rectangular selection tool.
3. Third button sends a screen shot direct to your default connected printer.

Note: you can preset your Screen Capture and Print settings (file format, name, save location, default printer) under **Tools–mimioMouse–Preferences**.

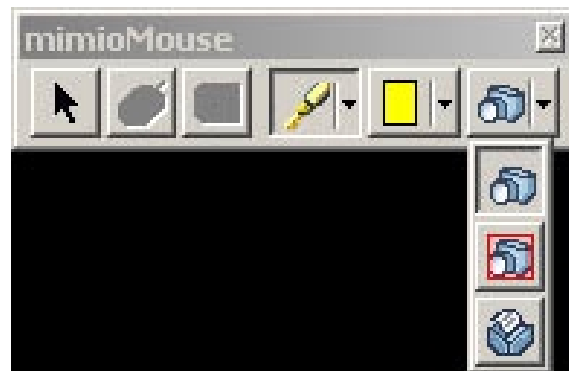
MimioMouse (cont.)

Mark-up & Annotation (cont.)

Example: Open a PowerPoint presentation and run the slide show. Select the highlighter from the mimioMouse Toolbar. Now press the mimioMouse pen over a selected area to highlight it as you would with a regular highlight marker. Then, select the pen tool and add notes to the slide.



Once you have completed your highlighting and writing, press the Screen Capture icon (the camera on the floating mimioMouse toolbar), select where you want to save it (make sure to remember file name and location) and click OK.



You will hear a sound similar to a camera snapshot and the screen will flash. This indicates that the screen has been captured. At this point, click the **Cursor toolbar button**, select OK to “Remove all mark ups,” exit mark-up mode and go to the location on your PC where you saved the screen capture. Double click on that file and the screen capture including your annotations on the PowerPoint slide will appear. This image can then be copied pasted into other applications.

Note: You can also activate the mimioMouse control panel, which provides additional control from the board of mimioMouse and your active applications.

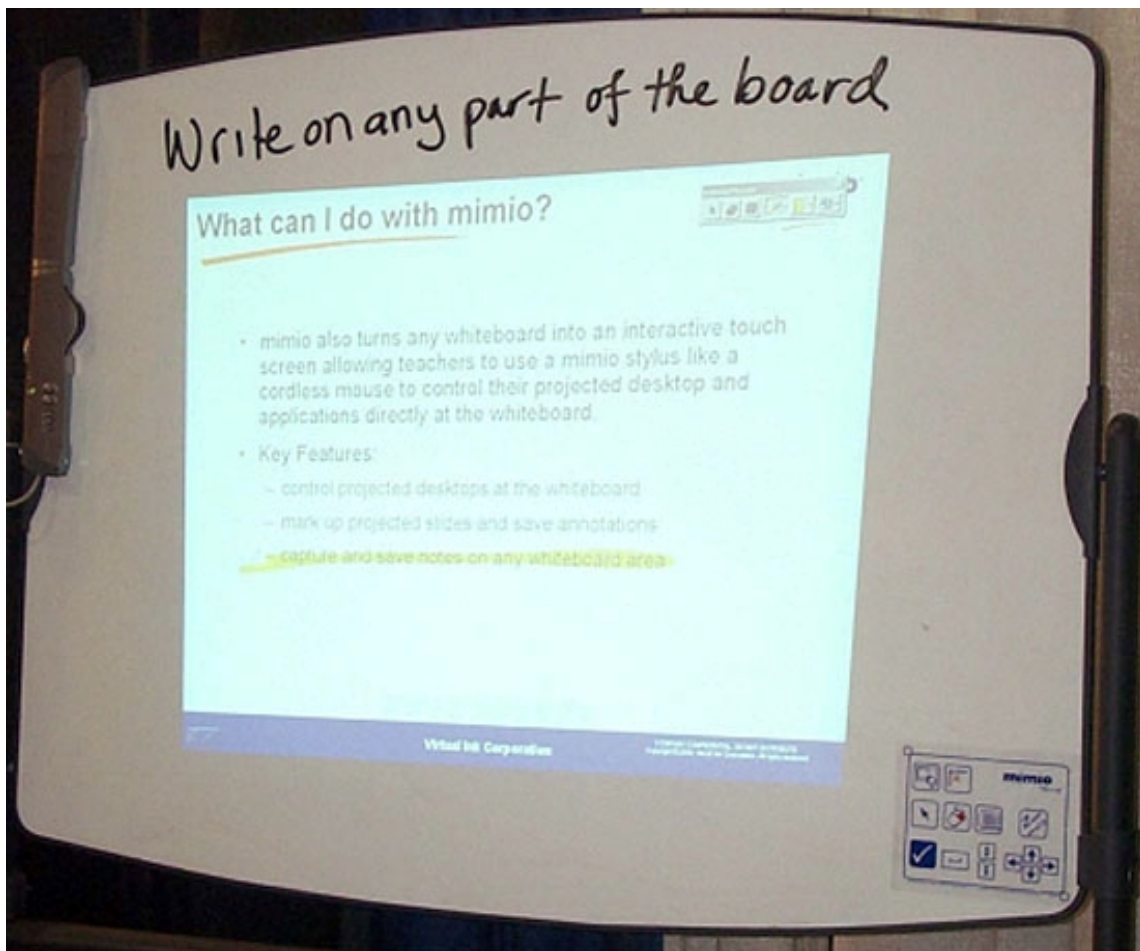
mimioMouse (cont'd)

mimio Dual Mode Operation

You have seen how mimio Xi allows you to capture, save and share whiteboard data and you have seen how mimioMouse permits your whiteboard to become an interactive touch screen. **You can do both simultaneously!**

Project your PC desktop onto an area of your whiteboard (preferably the right side). Depending on the size of your board, you can have an interactive projected display area up to 4' (1.2m) x 5' 4" (1.6m) and still have an area 4' (1.2m) x 2' 8" (0.8m) available for writing and capturing notes.

Next, open up PowerPoint or any other application; pick up the mimioMouse stylus (with the plastic mimioMouse insert) and scroll through presentations or documents. While still in mimioMouse mode, pick up the other mimio stylus (with a dry-erase marker) and start writing in the non-projected area of your board.



Even though you are in mimioMouse mode, all other mimio application are operative, allowing you to simultaneously record whiteboard notes using any stylus pens other than the color stylus being used as the mimioMouse.

Note: While mimioMouse allows you to operate in 2 modes simultaneously, the mimio capture device will only recognize one mimio stylus (writing or mouse) at a time.

Quick Tips for Optimizing mimio Xi Performance

- Keep the mimio stylus you are using as close to a **90-degree angle** to the board as possible.
- **Maintain** a firm but even pressure with the stylus on the board. If you can hear the “**buzzing**” noise, the stylus is generating a signal and mimio Xi will capture what you write.
- When replacing the marker pens **chisel tips** are better for fine work than bullet tip markers. (Most office supplies outlets stock both types).
- Every now and then use a **quality whiteboard cleaner** on the board to remove acculated Ink residue.
- The more **accurately** you calibrate the board when in mimioMouse mode the easier you will find using drag and drop functions from the board, etc.
- You can **use** your mimio Xi and software as a tool for creating annotated screen shots or printouts of computer screen images. All the annotated screenshot images in this manual were created on the PC by opening mimio, attaching the capture bar, running the mimioMouse calibration and then using the mimioMouse tools from the to annotate the computer screens with highlights, arrows (from whiteboard or keyboard). Use the camera icon to save the screen captures as jpeg or .bmp files, which can be embedded in a document.
- **When** working with mimioMouse always make sure that the stylus is in **rectangle selection tool** mode when not using the soft pens to ensure that you do not create electronic ink when you attempt to pick up something for export with the Mouse stylus. **This is particularly important when exiting Full Screen mode in the mimio software.**
- When using a projected image to display captured ink from the whiteboard adjust the **line thickness** to suit in the Stylus Set so that the captured ink is bolder.
- Once you have used screen capture and no longer need the original mark up, **delete** them from your computer since they are bitmaps and take up a lot of memory.
- Always remember to **replace** caps on the mimio styli – the markers will dry up the same as any other dry-erase marker when not capped.
- **Never** place the permanent eraser holder in the line of site of the capture bar. We recommend that you place it directly **underneath** the capture bar so that it does overlap any active area of the mimio-enabled whiteboard.
- **Remember** that you cannot use **more than one mimio stylus** or the mimio eraser at the same moment. The capture bar can only recognize one signal source at a time.
- **Ensure** that the styli and erasers are **not** generating a signal when not in use (i.e. depressing the nib of a stylus in your hand while using another one) for the same reason as above.
- **If you have any problems call our technical support team (877.846.3721 in the US or +44 (0) 870 458 3355 in the UK or your local Master Distributor (Asia Pacific)).**
- **Ensure that all cables are safely placed and shielded** to avoid accidents.
- The styli are designed so that if you drop them they will **not** land nib first. However care should be taken to **avoid** excessive dropping to avoid possibility of damage and required replacement.
- AC Adapters (Xi only), Stylus Pens, Extended Color smartCaps, USB Cables, USB Active Extension Cables, additional Mounting Brackets and Eraser Felt Pads are among **replaceable or optional accessories** available from your mimio dealer.
- The main consumables are **batteries** and dry-erase **marker pens**.
- A **mimio Xi carry case**, only slightly larger than a typical laptop case can be purchased from your reseller, designed to hold all mimio Xi system components securely in one place.

Frequently Asked Questions

Q: How does mimio technology work?

A: mimio's tracking technology uses a combination of infrared and ultrasound to communicate and relay information from the Styli to the capture bar. When you press to write with the Stylus, it emits infrared and ultrasound signals in all directions (so that you don't have to worry about rotation of the Pen). The Infrared signal (travelling at the speed of light) reaches the capture bar first and starts a timing process. This signal is also coded uniquely for each signalling device (i.e.. Red, Green Pen, Small or Large Eraser etc.) so that the system knows what kind of stroke has been made on the board. The Ultrasound wave (travelling at the speed of sound) flows over the surface of the board. Sensors at each end of mimio bar detect it. Timing the sound wave from the Pen to the Bar, the system triangulates location of the Pen 87 times per second and converts the resulting series of x,y coordinates points into mimio's native ".ink" file format.

Q: How does mimio Xi communicate with the PC?

A: mimio Xi captures the information written or drawn on the whiteboard and processes it into a proprietary "ink" data format that can be transferred to the PC in real-time or stored in flash memory and downloaded later to the PC via USB cable.

Q: What is the power source for mimio Xi?

A: mimio Xi has three power options to offer the greatest ease of use and flexibility – 4 x AA batteries, USB cable, or an optional AC power adapter.

Q: How long will the batteries last in the mimio Xi bar?

A: Approximately 40 hours of actual usage. The system will go to sleep when not used for extended periods and the power LED on the bar will change color to indicate low battery condition well before the system ceases to operate.

Q: In stand-alone mode, how much whiteboard information can I store in the flash memory before I need to download to my computer?

A: The bar has enough memory (500KB) to hold approximately 10 hours of meeting notes (assuming actual writing time equal to 15 – 20% of the meeting).

Q: What size boards will mimio Xi work with?

A: ANY standard whiteboard ranging in size from 2' x 3' (.6m x .9m) to 4' x 8' (1.2m x 2.4m).

Q: Do I need special markers?

A: mimio uses Sanford Expo® or Expo2 size dry-erase whiteboard markers. mimio branded markers of the same size are available from your mimio dealer.

Q: Do I need a special eraser?

A: To "erase" digital data when erasing the actual board, you must use the mimio eraser. The mimio eraser utilizes the same stylus-tracking technology. The mimio eraser allows you to erase both wide and narrow areas with 2 different-sized felt pads: 4" and 3/4".

Q: Can I share ink files with others who have previous version of mimio software?

A: Yes. Mimio .ink files can be shared with users who have previous versions of the software.

Q: With what operating systems will mimio Xi work?

A: mimio Xi will work with recent versions of Windows, including Windows 98, 98SE, Me, 2000, and XP. It does not work on Windows 95 or NT. It does not work on a Macintosh at this time.

Q: What mimio systems will operate with Windows 95 and NT?

A: mimio "classic" and mimio flipChart using the serial interface cable can be used with Windows 95 and Windows NT, which do not support USB.

Q: What mimio systems will operate with Apple Macintosh?

A: mimio "classic" with a mimio USB Adapter will operate with USB enabled Macintosh computers using mimio for Macintosh software v. 1.5 (for OS 9.x) or v. 1.6 (for OSX).

A full list of dealers can be found on <http://www.mimio.com/buy/index.html>

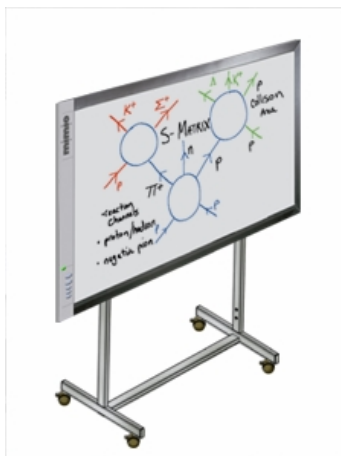
Box Contents- mimioBoard

Check to make sure that you have all of the mimioBoard components listed.

- 16' (5m) USB cable
- 2 - mimio stylus pens (Black & Red)
- 2 - mimio smartCaps (Blue & Green)
- 4 - Expo dry-erase markers
- 1 - mimio eraser and eraser holder
- 1 - AAA battery for eraser
- 4 - N-Cell batteries
- 1 - plastic mimioMouse pen insert
- 1 - set of wall mounting brackets for mimioBoard
- 1 - CD including mimio software, "Getting Started Guide" and installation instructions

System Specification:

- MS Windows® 98, 98 SE, 2000 or XP
- IBM compatible – 256 MHz minimum
- 32 MB RAM minimum (64 MB recommended)
- 15 MB free hard drive space
- CD Rom Drive
- Available USB port



Setting-Up mimioBoard

1. Unpack your **mimioBoard** and mount in the desired location on the wall, using inclosed brackets and fitting or assemble the optional **mimioBoard stand** and fit the mimioBoard on the stand as indicated in the instructions.
2. Follow the guidelines on pages 6 and 7 of this User Guide for setting up pens and installing mimio software.
3. Connect mimioBoard to your PC using the supplied USB peripheral cable which connects to the USB port on the side of the aluminum housing on the left side of the board.

Open the mimio program on your PC and follow the guidelines described in this manual

Box Contents – mimio “classic” for Windows

Check to make sure that you have all of the mimio components listed.

- Capture bar
- 10 ft (3m) Serial Cable connected to your PC with pass through PS2 connector for power
- 4 mimio stylus Pen cases
- 1 mimio eraser
- 1 mimio eraser holder
- 4 whiteboard markers
- 1 plastic mimioMouse insert
- 5 AAA batteries
- 2 metal permanent mounting brackets with screws
- 1 calculator control panel
- Installation poster
- Warranty and Registration Card
- Getting started guide
- mimio software installation CD (or downloaded v. 2.7 from <http://www.mimio.com/software>)



Setting-Up mimio classic for Windows

4. Unpack the box and check that you have all of the components listed.
5. Install the supplied **batteries** and marker pens in the **styli cases** and supplied **battery** in the **eraser**. You do this as follows:
 - a. **Pens**-remove the **clear plastic cover** by pressing the end of the pen. Remove the **green switch cover** by lifting the cover at the nib end and slide down. Insert one AAA battery and replace the switch cover. Insert the corresponding colour marker to the styli case. Replace the clear plastic cover. Do this for all 4 pens.
 - b. **Eraser**-remove the top cover by pressing the sides close to the thin felt pad. Insert one AAA battery and replace the top cover.
6. Load the operating software onto your PC. If your PC does not auto start the set-up program after placing the **CD** in your CD-ROM drive press **Start/Run** type **D:\setup.exe (enter)** in the **Run** dialogue box (where D:\ is the location of your CD-ROM drive). Then follow the onscreen instructions.
7. **Attach the capture bar** to the top left hand corner of your whiteboard. Ensure that the 2 hinged flaps are out. Press the bar firmly to the board and close both flaps-you will hear an audible click. (The flaps pull the suction cups upwards creating a strong 'vacuum' adhesion)
8. **Connect the capture bar** to your PC using the supplied **serial cable**.

NOTE: You must connect the PS2 mouse pass through connector as well as the serial connector- this draws power to the bar.

Open the mimio program on your PC

Box Contents – mimio flipChart for Windows

Check to make sure that you have all of the mimio components listed.

- Flipchart Capture bar
- 16 ft (5m) Serial Cable with min DIN connector and serial connector & pass through PS2 connector for power
- 16 ft (5m) USB Cable with mini DIN connector
- 2 mimio stylus Pen2
- 4 color smartCaps (Red, Blue, Black, Green)
- 1 flipChart Capture bar mounting clip bracket/holder
- 1 mimio stylus clip bracket/holder
- 4 flipchart markers
- 4 N cell batteries
- Warranty and Registration Card
- Getting started guide
- mimio flipchart software installation CD (or downloaded v. 2.7 from <http://www.mimio.com/software>)



Setting-Up mimio flipChart for Windows

9. Unpack the box and check that you have all of the components listed (next page).
10. Install the supplied **batteries** and marker pens in the **Pen2 styli** and the **eraser**. You do this as follows:
 - a. **Pens** – follow the same procedures described at the beginning of this document for set up the pens.
 - b. **Eraser**-remove the top cover by pressing the sides close to the thin felt pad. Insert one AAA battery and replace the top cover.
11. Load the operating software onto your PC. If your PC does not auto start the set-up program after placing the **CD** in your CD-ROM drive press **Start/Run** type **D:\setup.exe (enter)** in the **Run** dialogue box (where D:\ is the location of your CD-ROM drive). Then follow the onscreen instructions. **It is recommended to download and install the latest mimio software application from www.mimio.com/software.**
12. **Attach the flipchart capture bar** by first attaching the bracket/holder to the backing card or last sheets of paper of the flip chart pad being used. The flipChart bar will sit in the bracket.
13. **Connect the flipChart bar** to your PC using the supplied **serial or USB cable**.

NOTE: When using serial cable, you must connect the PS2 mouse pass through connector as well as the serial connector- this draws power to the bar.

Open the mimio program on your PC