

Touchboards

205 Westwood Ave, Long Branch, NJ 07740

Phone: 866-94 BOARDS (26273) / (732)-222-1511

Fax: (732)-222-7088 | E-mail: sales@touchboards.com



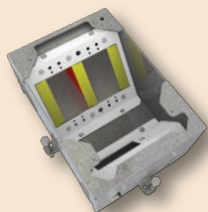
FLOOR BOXES



Bringing Elegant Cable Access To Your Infrastructure

Created to Amaze

CONCRETE



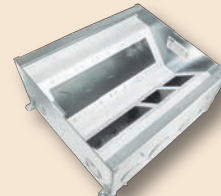
Model # FL-200
Size: 8 3/4" X 6"
Depth: 3", 4"
Cover Size: 8 3/4" X 6" X 1/8"
Knockouts: Range - 3/4" to 1 1/4"
Brackets: 1 Sloping field transformable,
 1 Sloping Decora Opening
Floor Type: Concrete



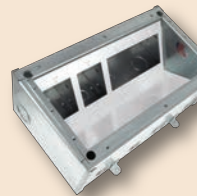
Model # FL-500P (*)
Size: 10" X 12"
Depth: 2 1/4", 3", 4", 6", 8", 10"
Cover Size: 10 1/2" X 12 1/2" X 1/8"
Knockouts: Range - 3/4" to 1 1/2"
Brackets: 2 Sloping field transformable
Floor Type: Concrete



Model # FL-540P
Size: 10" X 12"
Depth: 4", 6", 8", 10"
Cover Size: 10" X 12" X 1/8"
Knockouts: Range - 3/4" to 1 1/2"
Brackets: 2 Sloping field transformable
Floor Type: Raised access, stage & computer floors

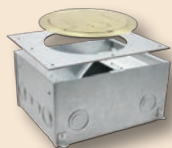


Model # FL-600P (*)
Size: 13 1/2" X 12"
Depth: 3", 4", 6", 8, 10
Cover Size: 14" X 12 1/2" X 1/8"
Brackets: 2 Sloping field transformable
Knockouts: Range - 3/4" to 2"
Floor Type: Concrete



Model # FL-640P
Size: 18" X 12"
Depth: 5", 6", 8", 10
Cover Size: 18" X 12 1/2" X 1/8"
Knockouts: 6" Range - 3/4" to 2"
Brackets: 2 Sloping field transformable
Floor Type: Concrete

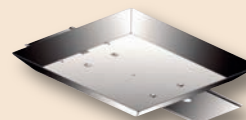
FL-500P, 540P, 600P and 640P have reconfigurable internal brackets. 6" and deeper back boxes also have cable "pass-through" capability.



8" Round Cover option for FL-500/540 & 600/640 Floor Boxes

Pour Pan

If your application is a poured concrete floor and the box rests on soil, rock or gravel, you must first install the Pour Pan.



A temporary cover is included and protects the floor boxes interior during installation. Order your finished cover separately.

(*) These boxes are designed for the new UL safety standard for scrub water. The standard only applies to boxes installed in concrete, not raised access boxes.

RAISED ACCESS



FSR's Raised Access Floor Boxes are designed to handle a variety of connections and applications.

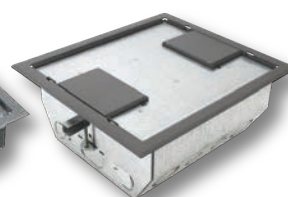
The RFL Series of Floor Boxes is available in many sizes and depths. The all-metal construction is built to handle the rigors of a floor environment, yet blends into the floor pattern.

The beveled steel carpet rim is available standard in gray, black or clay. We will provide custom finishes to match your design. Covers are available with one or two access doors, or a solid metal cover.

The RFL-AVs



RFL-QAV-BLK



RFL-QAV-CLYDD

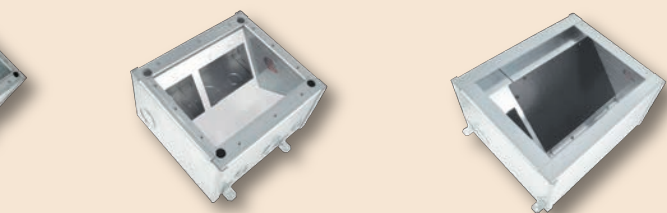


RFL-DAV-SLGRY



Steel construction makes FSR back boxes virtually indestructible. They are your solution for power, audio, video, telecommunications and data.

FIRE RATED



Model # FL-710 (*)
Size: 8" X 9"
Depth: 5 1/4"
Cover Size: 8" X 9" X 1/8"
Knockouts: 6 either 1/2" and 3/4"
Brackets: 1 Sloping
Floor Type: Concrete

Model # FL-2000
Size: 10" X 12"
Depth: 6"
Cover Size: 10 1/2" X 12 1/2"
Knockouts: 2 total in AC section:
1 rear either 1/2" and 3/4"
4 total in AV section:
3 rear and 1 right side either 1" and 1 1/4"
Brackets: 1 Sloping
Floor Type: Concrete



SmartFit Series

Designed for use in fire-rated floors, these sturdy core hole products are available in 4", 6" and 8" diameters. All models offer flexibility via mounting bracketry to accommodate a wide assortment of power, data and audio video connection options. A complete line of sub-plates for device mounting and connectors is available.

Available covers finishes:

- Brushed Aluminum
- Brushed Brass
- Black

The cover technology exceeds UL scrub water testing requirements. Individual spec sheets and drawings available on the FSR website.

One piece all welded design providing both strength and ease of installation. Cover is painted with Sandtex for a non-skid finish, available in black or oak.

STAGE



Model # FP-2-BLK
Size: 7 3/4" X 5 3/4"
Depth: 4 3/4"
Cover Size: 7 3/4" X 5 3/4" X 1/8"
Knockouts: Open area for a two gang box. (Customer supplied)
Brackets: 1 Sloping
Floor Type: Raised access, stage & computer floors



Model # FL-1200
Size: 3 3/4" X 4 3/4"
Depth: 4 1/2"
Cover Size: 4 3/4" X 6" X 1/8"
Knockouts: 1 rear either 1/2" and 3/4"
1 bottom either 1/2" and 3/4"
Brackets: 1 Sloping
Floor Type: Raised access, stage & computer floors



Model # FL-1300
Size: 5 1/8" X 7 1/8"
Depth: 4 7/8"
Cover Size: 6 1/8" X 8 1/2" X 1/8"
Knockouts: 2 rear concentric either 1/2" and 3/4"
1 bottom concentric either 1/2" and 3/4"
1 each left and right sides concentric 1/2" and 3/4"
Brackets: 1 Sloping
Floor Type: Raised access, stage & computer floors



Model # FL-1500
Size: 11 1/8" X 8"
Depth: 6"
Cover Size: 13 1/2" X 9 1/2" X 3/16"
Knockouts: 4 rear either 1" and 1 1/4", 4 bottom either 1" and 1 1/4"
Brackets: 1 Sloping
Floor Type: Raised access, stage & computer floors



P: 800.332.FSR1 • W: fsrinc.com • E: sales@fsrinc.com



RESIDENTIAL

SmartFit™ (Poke-Thru)

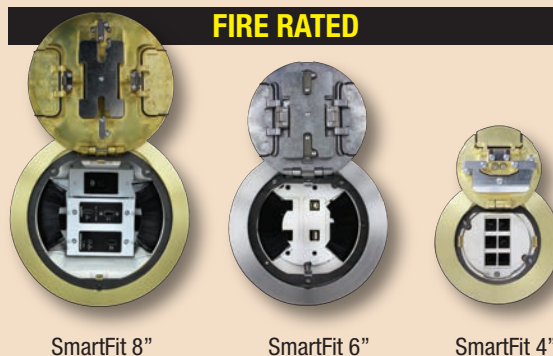


It's Not Just Power Anymore

FSR SmartFit is an innovative system that provides flexible power and AV solutions for fire rated Poke-Thrus'. The SmartFit system features a universal cover assembly and multiple sub-plates that install in the fire rated Poke-Thrus' and are now available in 4", 6", and 8" sizes.

The system offers three architectural finishes: Aluminum, Brass, and Black, providing an attractive appearance with superior durability.

With the SmartFit system, FSR delivers one consistent look for installations with power and audio/video requirements. There are sub-plates available in the SmartFit line, including a Dual Decora and 3-IPS-insert sub-plate.



SmartFit 8"

SmartFit 6"

SmartFit 4"

Cover finishes:
Brass, Aluminum or Black



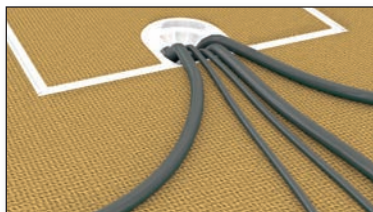
SF-IPS-PB Kit with a SF-BLKT-CV Cover

HEAVY-LOAD



The FLH20 Heavy-Load Capacity Floor Box combines rugged construction and elegant design for carpeted and non-carpeted floors.

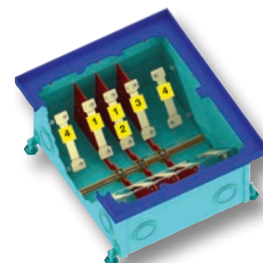
Perfect for Hotels, Ballrooms, Stages, Convention Centers, Museums, Warehouses, Showrooms, and Lobbies.



Compartment Dividers:
Remove or arrange as needed to isolate compartments.



Center Dividers:
Remove to run cables across compartments.



Field Configurable Interior



P: 800.332.FSR1 • W: fsrinc.com • E: sales@fsrinc.com

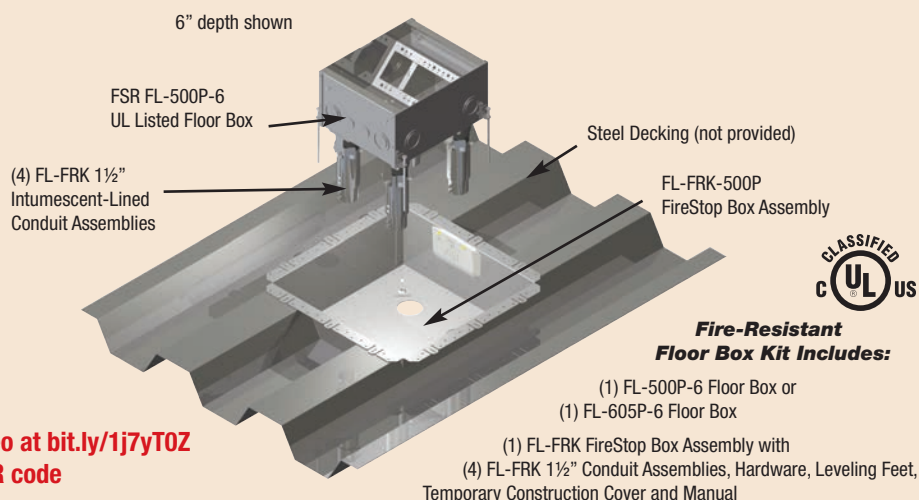


FIRE-RATED

The Fire-Resistant Kit is offered in two sizes: the FL-500P-6-FRK and FL-605P-6-FRK. Both models include a UL listed 3-hour Fire-Resistant Floor Box system comprised of a FireStop box, and four FL-FRK 1½" Intumescent-Lined Conduit Assemblies, hardware and installation instructions. A temporary construction cover is included to protect the floor box interior during installation. Order your finished cover separately.



Watch the video at bit.ly/1j7yT0Z or scan this QR code



ALL SURFACES



Built for all Venues and all Surfaces

- Easily accessible floor boxes provide practical solutions for cable storage.
- Large hinged section of the cover allows full access to internal cables & connector plates.
- A smaller hinged trap door fastens back to create an efficient cable exit.
- Cable storage in the box allows unencumbered travel. ADA compliant.
- Brass or aluminum low-profile edging blends seamlessly into decor.
- Hand mitered carpet edges provide elegant finishing touches.
- 11 gauge steel covers installed flush with floor. Only hand mitered trim is visible when covers are in place.
- All Steel construction.



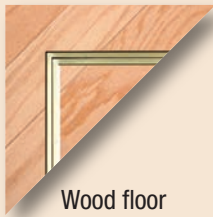
INTELLIGENT PLATE SOLUTIONS



The IPS family of interconnect solutions offers a comprehensive selection of accessories, available in white, ivory or black. Simply select a plate that fits your application and available space. Then select your internal connector plate. IPS Plates come with a lifetime warranty. We offer FREE standard labeling. Visit our web site and drag and drop your solutions with IPS Designer.

COVER FINISHES

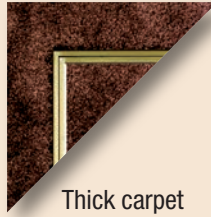
Elegant hand-mitered edging on covers blend with any decor or color combination. For use with virtually all choices of floor covering.



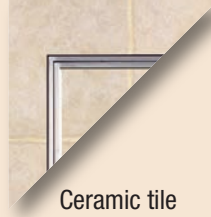
Wood floor installation using 1/2" brass edging on cover



Industrial carpet installed using 1/4" low profile aluminum edging on cover



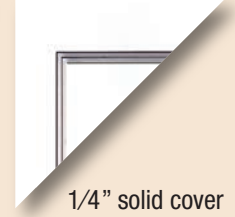
Thick carpet installation using 1/2" brass edging on cover



Ceramic tile installed using 1/2" aluminum edging on cover



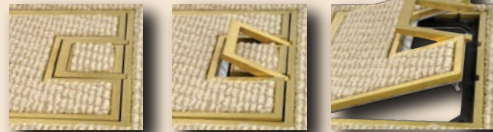
1/4" painted edging with industrial carpet



1/4" solid cover in anodized aluminum or painted gray, clay or black



Available in brass, aluminum or painted edging to compliment floor covering.



The new U-Access cover design features a handle to easily lift the cover. All corner fasteners have been removed.

See a larger view at bit.ly/1aKZzT6 or scan this QR Code



FACILITIES USING FSR FLOOR BOXES

Apple, Cupertino, CA
 Facebook, Palo Alto, CA
 Howard Hughes Institute, Chevy Chase, MD
 Bank of America, Boston, MA
 Kennedy Center of Performing Arts, Wash., DC
 FBI, Chantilly, VA
 UT Museum of Natural History, Salt Lake City
 ESPN Zone, Las Vegas, NV
 Seminole Hard Rock Casino, Hollywood, FL
 Merck & Company, Rahway, NJ
 Federal Reserve Bank, Chicago, IL
 PIXAR Animation, Emeryville, CA
 Mastercard International, MO
 Princeton University, Princeton, NJ
 San Joaquin County Office of Education, Stockton, CA
 Oregon Museum of Science & Industry, Portland, OR

All FSR Table, Floor, Wall and Ceiling Box CAD drawings and BIM objects are available on our website. For assistance in selecting the proper box to hold your power, data, voice, video, etc., please call us at 1-800-332-FSR1 (3771).

A complete BIM Object Library of all our products is on the ARCAT website (www.ARCAT.com) and is also available embedded in MasterSpec and software.



Hershey Convention Center
Hershey, PA



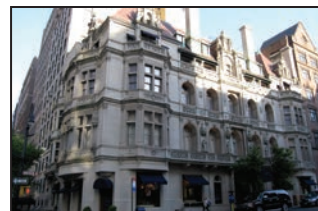
Harvard Law School
Cambridge, MA



Tiger Woods Learning Center
Orange Cty., CA



Marriott Marquis Hotel, NYC



Ralph Lauren, NY



Google, CA



244 Bergen Boulevard · Woodland Park, NJ 07424
 800.332.FSR1 · 973.785.4347 · F: 973.785.3318
 W: fsrinc.com · E: sales@fsrinc.com

LIT1189K

© 2016 FSR, Inc. All Rights Reserved



Specifications are subject to change without notice.