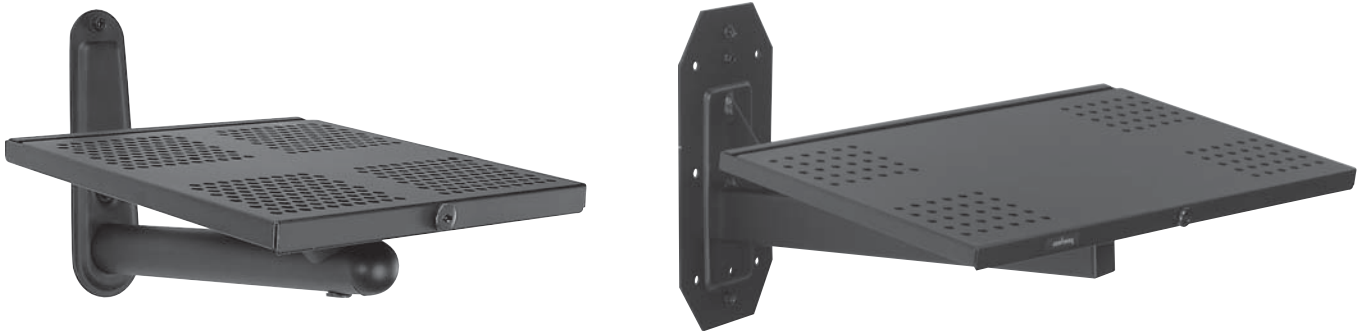


Slimline™ Series Wall Mounts for 9" to 27" TV's

Touchboards

205 Westwood Ave, Long Branch, NJ 07740
Phone: 866-94 BOARDS (26273) / (732)-222-1511
Fax: (732)-222-7088 | E-mail: sales@touchboards.com



The Slimline Wall Mounts provide an alternative to the Jumbo Mount for installations with limited space. These shelf style wall mounts offer an attractive, low profile design that is unparalleled in strength and safety. Models LWB 375CB and LWB 375TCB are specifically designed for mounting 25" to 27" TVs on concrete block (cinder block) walls. The small Slimline Wall Mounts (SWM models) offer an attractive low profile design that is both functional and affordable for 9" to 17" TV screens.

- Two-piece security tray with key lock (Except for WB models)
- Optional Fixed 10° tilt trays
- Attractive low profile design for limited space installations
- 360° swivel

SWM Models
LWB Models
WB Models

Slimline™ Series Wall Mount for 9" to 27" TV's



Model Numbers

SWM310	for 9" - 13" TV screen
SWM314	for 13" - 16" TV screen
SWM334	for 15" - 17" TV screen
LWB530, LWB530T, WB20T	for 19" - 20" TV screen (Rectangular Wall Arm)
LWB375, LWB375T, LWB375CB, LWB375TCB, WB27T	for 25" - 27" TV screen (Tapered Wall Arm)

Product Specifications

- Two-piece security tray with key lock (Except for WB models)
- Optional fixed 10° tilt tray
- Attractive low profile design for limited space installations
- Models LWB375CB and LWB375TCB available for cinder block installations
- 360° swivel
- Includes fasteners for wood stud mounting
- Multiple perforated hole pattern for attachment of TV

FEATURES

TRAY DEPTH

WB20T, WB27T	10" (25.4 cm)
SWM310	11.5" (29.2 cm)
SWM334	12" (30.5 cm)
SWM314	12.5" (31.8 cm)
LWB530, LWB 530T	13" (33 cm)
LWB375, LWB 375T, LWB375CB, LWB375TCB	15" (38.1 cm)

TRAY WIDTH

SWM310	10.5" (26.7 cm)
SWM314	13" (33 cm)
SWM334	17" (43.2 cm)
WB20T, WB27T	20" (50.8 cm)
LWB530, LWB530T	22" (55.9 cm)
LWB375, LWB375T, LWB375CB, LWB375TCB	24.25" (61.5 cm)

OVERALL REACH

SWM310	14.5" (36.8 cm)
SWM314, SWM334	18.25" (46.5 cm)
WB20T	19.75" (50.2 cm)
LWB530, LWB530T	20.5" (52.1 cm)
WB27T	23" (58.4 cm)
LWB375, LWB375T, LWB375CB, LWB375TCB	25" (63.5 cm)

FINISH AVAILABLE COLORS ACCESSORIES

Scratch Resistant Fused Epoxy
Black
Metal and Concrete Fasteners, VCR/DVD/DVR Mounts, Safety Belt and Wall Plates

Package Specifications

PACKAGE CONTENTS

Mounting Hardware, Tray and Arm

PACKAGE SIZE

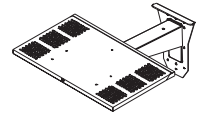
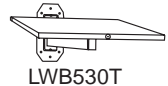
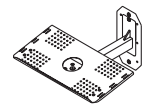
SWM310/314/334:	18.625"(L) x 12.75"(W) x 6.125"(H) (47.31 x 32.39 x 15.56 cm)
LWB375/375T/375CB/375TCB/530/530T:	24.875"(L) x 15.75"(W) x 6.125"(H) (63.18 x 40.01 x 15.56 cm)
WB27T:	36.6"(L) x 15"(W) x 1"(H) (92.96 x 38.1 x 2.54 cm)

PACKAGE SHIP WEIGHT

SWM310:	9 lbs (4.1 kg)	LWB530T:	21 lbs (9.5 kg)
SWM314:	11 lbs (5 kg)	LWB530:	22 lbs (10 kg)
SWM334:	13 lbs (5.9 kg)	LWB375/375CB:	27 lbs (12.3 kg)
WB20T:	16 lbs (7.3 kg)	LWB375T:	28 lbs (12.7 kg)
WB27T:	20.9 lbs (9.5 kg)	LWB375TCB:	29 lbs (13.2 kg)

PACKAGE UPC CODE

SWM310:	735029195870	LWB530T:	735029190240
SWM314:	735029195887	LWB375:	735029193234
SWM334:	735029195894	LWB375T:	735029193241
WB20T:	735029198086	LWB75CB:	735029206026
WB27T:	735029198093	LWB375TCB:	735029206033
LWB530:	735029190233		



LIMITED 5-YR. WARRANTY

(800) 865-2112

www.peerlessindustries.com

Touchboards

205 Westwood Ave, Long Branch, NJ 07740
Phone: 866-94 BOARDS (26273) / (732)-222-1511
Fax: (732)-222-7088 | E-mail: sales@touchboards.com