



## WiPS710-ENT Quick User Guide (Ver 1.1.1)

### Wireless/over IP Interactive Presentation- Mirroring Receiver for Windows, Mac, iOS & Android OS

WiPS710-ENT is Teq AVIT's Wireless Interactive Presentation-mirroring Receiver for Computer and mobile devices screen video and audio with optional built-in access point for wireless network and Ethernet port for wired LAN. It connects laptops, notebook, Ultrabooks or mobile devices like iPad, iPhones, Android tablets or Smartphones to any projector or LCD/Plasma display for presenting high quality presentations or mirroring screens. It is compatible with Windows, Mac OS, iOS and Android OS. With its unique Plug-and-Show token, Split screen Collaboration mode, Conference Control mode, free Mobile Apps and Remote Control-desktop feature, the WiPS710-ENT is an integral part of conference room, meeting room, training or classroom.

## Hardware Mounting

Put WiPS710-ENT flat horizontally on a stable surface like shelf or counter top. It can be mounted behind flat panel LCD or LED or Plasma displays on wall using provided bracket. It can be attached to surface of bracket or pipe for Projector or its mount using Adhesive tape or Velcro tape. The unit surface can get warm when operational, so it is recommended to secure it by cable ties.

**Display Connection.** Connect HDMI output of WiPS710-ENT into HDMI input of LCD/Plasma display or Projector or to input of a switcher/splitter/extender. Default output is HDMI output, however it can be connected to VGA-XGA display via HD-15 VGA connector after reconfiguring it via admin webpage. Connect Audio output from WiPS710-ENT into speakers of display or audio system of mixer/amplifier.

**Network Connection / AP Client mode.** If WiPS710-ENT needs to be on existing network infrastructure via Ethernet connection for accessing internet or network resources, connect a network cable from switch or router to the RJ-45 connector.

If WiPS710-ENT needs to be on existing Wireless Access point (non-controller based) for wireless connection for internet/network resources, configure AP Client mode settings for SSID and encryption keys for existing wireless access point.

By default internal access point WiPS is active at power on and it can be used for connection to WiPS710-ENT device. If WiPS710-ENT is connected to LAN and internal WiPS AP is left active then it allows only internet access by default. One can disable internet traffic or all network traffic via Gatekeeper function if needed.

**Screen Mirroring via computers** There are three methods of connecting to the

display through WiPS710-ENT from any computer with Windows or Mac OS:

**ConnectNpresent:** For routine users by installing WIPS App on the computer and launching that App.

**ClickNpresent:** For routine users, mirror/project screen with a single click direct connect to a specified WiPS710-ENT/display after installing WIPS App and creating Association file.

**PlugNpresent:** For Visitors or guests without installing App by running WIPS App from provided PNS Token (USB disk) or designated network location.

## App Installation


Depending on your network connection, get connected to WiPS710-ENT via the wireless or wired network in the facility. Open up web browser and type in the web-address shown on your display without http:// www. From the webpage of WiPS710-ENT, Enter the password (default is Download) and click login button. One can click Download button next to OS of the connected computer. Run or Save the WiPS.exe for Windows OS or WiPS.pkg file for Mac OS. When the downloaded files are saved then open the location and double-click to install.



Make sure the computer's firewall or Smartscreen filter allows WIPS app to pass through and complete installation by following on screen instructions. After install the program, WIPS shortcut will be placed on desktop.

## Operation Client App & User Interface



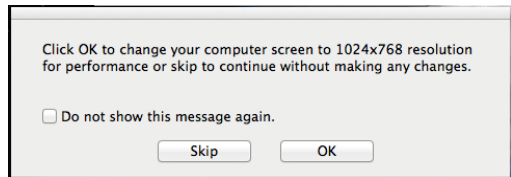
Click WIPS shortcut on desktop or UI  Alternatively locate WIPS App from Program List or Search window via Start button on Windows OS. On Mac OS locate WIPS app on desktop or dock or Application list in Finder. A new window / UI box labeled as "Connect to Receiver Device" will appear on screen.



In this UI box click box next to scan to discover the list of WIPS devices on the network or click the folder button on the top right to enable Room List feature.

Click on connect button on screen, enter 4-digit login code seen on the right side of the screen. Click “Ok” button next or hit enter key.

In WIPS user interface box press Play button in center to show full screen image. Press 1 through 4 to show in respective corner for Collaboration mode.



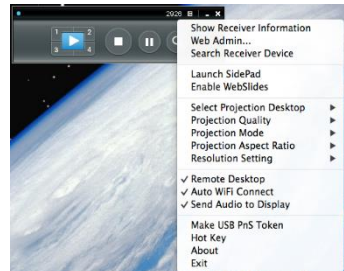
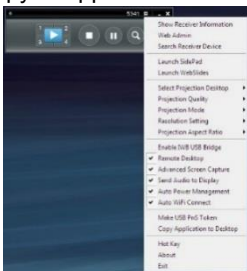
The default resolution for WIPS710-ENT is 1080p on HDMI or XGA (1024x768) if using VGA connection so if connected computer’s resolution is different than window will appear with message to adjust computer screen size. Press Skip button so WIPS710-ENT will scale or adjust itself rather than adjusting display settings of the connected computer.

If the computer is not on same VLAN or IP address range -subnet mask of WIPS710-ENT device then enter IP address in UI. If WIPS app fails to connect to WIPS710-ENT device, then put WIPS710-ENT on same network or click Reconnect button.

## Configuration > UI Menu

Click  icon to open Option menu to manage: **Main / Extended screen projection**

Quality and aspect ratio of screen mirroring, Graphics / Video mode, advanced screen capture of surface windows, audio projection, make a new Plug N Show token or get a copy of application.



## Configuration > Admin Web Page

Teq AVIT WIPS710-ENT is pre-configured at factory for default settings. Following settings are allowed to be modified using administration web page by entering IP address of WIPS710-ENT device in any standard browser and selecting Admin menu. Default Admin login password is Admin&11. The Admin webpage can alternatively be accessed via Option menu button of User interface.

System status page provides information about WIPS710-ENT settings.

- Network setup ( Static / DHCP IP address, DHCP server, Wireless access point, Security/Encryption, AP Client mode, Gateway setup)
- Projection Setup (Output format selection between VGA /HDMI, video output resolution, Login code format)
- Default OSD background screen setup
- Change passwords for admin and trainer (Conference control mode) login
- Reboot device
- Firmware upgrade (Contact Tech support and upgrade only if advised)

System Status	
Model Name	WIPS710
Versions	
Firmware Version	1.0.0.0
Network Status	
IP Address	192.168.100.10
Subnet Mask	255.255.255.0
Default Gateway	192.168.100.10
Wireless MAC Address	00:12:5F:0B:EE:5C
Wire MAC Address	00:12:5F:0D:AA:AC
Connection Status	
Projecting Status	Projecting
Total Users	1
Code	9452


Copyright © 2007-2014 Teq AVIT. All rights reserved.

## Troubleshooting

Teq AVIT WIPS710-ENT is easy to operate, however if you are receiving error messages or connection problems please see below:

### A) The quality of the image is not sharp.

If connected wirelessly, check that the signal strength is Excellent or Good. This is verified by moving the cursor over the Wireless Network Connection icon in the lower

right-hand corner of the system tray.  You may be too far from the Wireless Receiver or there may be an object or wall obstructing the radio waves. Click on Menu button on WIPS utility and select Better Quality instead of Normal.


**B) The displayed image appears to be cropped.**

If the displayed image appears to be cropped, change the resolution of the transmitting PC in order to avoid this. The display resolution can be changed/verified by right-clicking on the desktop and selecting properties. From the Settings tab the resolution can be changed/ verified.

**C) The image or video displayed is slow.**

The quality of transmission depends largely upon the transmitting PCs CPU performance. Avoid running multiple applications simultaneously while streaming to maximize the CPUs performance.

If streaming wirelessly, check that the signal strength is Excellent or Good. This is verified by moving the cursor over the Wireless Network Connection icon in the lower

right-hand corner of the system tray.  The transfer rate may be slower in some operating environments depending on such factors as the location, radio signal conditions, and/or distances between transmitting PC and Wireless Receiver.

WiPS710-ENT plays full motion video using browser, YouTube or Windows Media Player or QuickTime in Speedy mode, so make sure to activate it by clicking on Video option in menu button in UI (User interface)

**Connection Issues:****H) How do I change or verify the IP settings?**

IP configuration is made through Network Center or Wireless Cards utility.

From the Start menu on your desktop, select Run. The Run dialog box appears. Type cmd. Next, click OK or press enter. A command prompt will appear. Type ipconfig and press enter.

The IP configuration should now be displayed. Also from the command prompt, the IP configuration reset. Type ipconfig /release and press enter to disconnect, then type ipconfig /renew and press enter to reconnect.

**WiPS Application and Firewall**

There are three types of firewall that could stop WiPS application of WiD series from not playing video in Video Playback mode or computer screen in Presentation mode:

- Network equipment Firewall
- Windows Firewall
- Third-party software based firewall

**1. Network equipment Firewall**

For WIPS App open the following ports in network switch or firewall appliance.

Inbound: UDP 1047, 1048, 1049 TCP:1041  
 Outbound: TCP 443, 389, 3286, 80, 21, 515

## 2. Windows Firewall

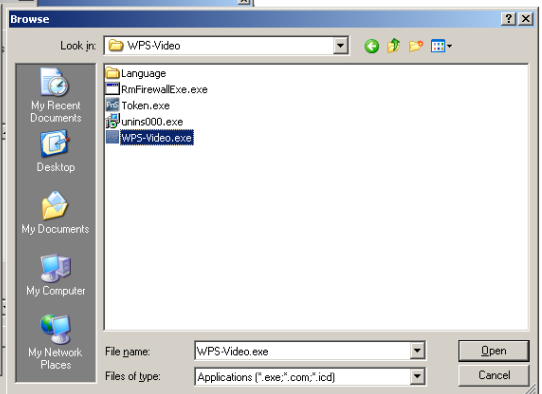
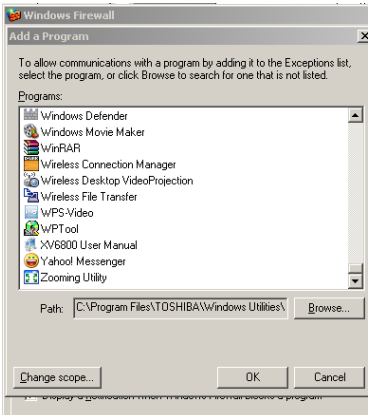
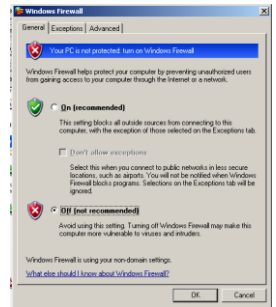
Please check the firewall in **Control Panel->Windows Firewall**

If Firewall is OFF then there would not be problem.  
 If Firewall is ON then click on Exception tab.

Check the exceptions, to see if there is **WIPS** present in the list. If present then put a check-mark in front of it. When WIPS App is running from computer or provided Plug N Show Token (USB-stick) is installed the firewall exception is added and selected automatically unless there are group network policies preventing that.

If **WIPS.exe** is not present the exception list, press the "Add Program" button to add it to the list and follow instructions.

Once WIPS .exe is added from C:/Program Files/WIPS make sure it appears in Exception list and there is a check-mark in front of it. Click OK and start WIPS application.



Inbound Rules					
Name	Group	Profile	Enabled	Action	Override
Mlb2-2196b99f4f6	Mlb2-2196b99f4f6	All	Yes	Allow	None
Mlb2-2196b99f4f6	Mlb2-2196b99f4f6	All	Yes	Allow	None
Mlb2	Mlb2	All	Yes	Allow	None
Mlb2	Mlb2	All	Yes	Allow	None

### 3. Software Firewall

If any software based third-party firewall like Zonealarm, Norton Systemworks, Norton 360, CA Internet Security Suite or McAfee Firewall, then please follow that software developer's documentation about allowing programs to safe list or adding exceptions to the firewall rules for WIPS app.

#### Specifications

<b>Function</b>	Wireless Presentation, Conference Control, Collaboration 4 to 1 split-screen
<b>Output</b>	HDMI port or HD-15 VGA Female connector with Audio on 3.5mm jack (audio on video playback)
<b>Output Resolution Support</b>	720p, 1080i, 1080p, SVGA (800x600) XGA (1024x768) WXGA (1280x768) WXGA+(1280x800 1400x900) UXGA (1600 x 1200)
<b>Hardware Support</b>	LAN, WAN (802.11b/g/n)
<b>Wireless technology</b>	802.11 b/g/N at 2.4 GHz
<b>Transmission Range</b>	150-ft Outdoor, 100-ft Indoor
<b>Transmission Rate</b>	54 Mbps wireless, 100 Mbps wired
<b>Encryption</b>	WEP, WPA, WPA2-PSK 128 or 64-bit
<b>Native OS Support</b>	Windows 8, 7, Vista, XP, 2000, Mac OS 10.6 above
<b>Mobile OS Apps</b>	Windows 8 Pro, iOS, Android
<b>Usability &amp; Security</b>	Auto-redirect, Login Security, Access point
<b>Power Supply</b>	5V DC, 2.0A input with included power adapter
<b>Dimensions (W x L X H)</b>	5.75" x 2.375" x 1" (146 x 137 x 25 mm)
<b>Weight</b>	0.8 lbs. (0.5 kg.)

Specifications are subject to change without notice. Check [www.teqavit.com](http://www.teqavit.com) for latest update and information.

#### Features

- Connect N Show mode with easy to use and fast WIPS app.
- Plug N Show - Convenient USB Token for hassle-free and fast presentation without installing any software on connecting computer.
- Windows 8, 7, Vista, XP, or Mac OS compatible App downloaded from device and installed in less than 10 seconds
- Built-in 802.11 n/g/b Access-point for wireless network client connection using 64/128-bit WEP/WPA security making single device for presentation and networking.
- Built-in Ethernet 10/100 Mbps LAN port to make WiPS710-ENT part of existing network infrastructure
- Conference control feature for moderating and streamlining presentations
- Collaboration mode allows screen of up to 4 participants wirelessly on same display
- Speedy mode for full-motion video playback with minimum lag.

- 1080p/720p HD output on HDMI or VGA-WXGA+ output on HD-15 connector
- Audio & Video transmitted from connected client PC or Mac
- Extended screen projection capability – ideal for PowerPoint presentations
- All-in-one presentation+ wireless access point device or part of existing wired/wireless network infrastructure.



**ConnectNpresent** For users who use frequent connection to WiPS710-ENT, install the WIPS App / client software utility (application specific to OS) from webpage of the WiPS710-ENT or from provided USB Plug & Show USB Token. After initial installation of application it is easy to connect by clicking on WIPS shortcut



**PlugNpresent** With Plug & Show USB Token, wireless presentation becomes easy! Just connect Laptop to WiPS710-ENT (through WLAN or wired network Ethernet), plug the token into a USB port, and locate Shortcut for Windows OS or Alias for Mac OS. There is no need to install drivers or download software or connect to the web like all other wireless video receivers.

**Collaboration using 4-to-1 Split Screen Projection** With this 4-to-1 split screen feature, up to four PC/Mac screens can be shown on display at same time to collaborate, side-by-side comparison, teach, compare and increase productivity. It is easy to switch from Collaboration to show full screen, just with a click without buying expensive video switchers or running complicated cables.

**Conference control** The moderator/instructor can control projection from connected PCs through a web-based control page of WiPS710-ENT. This function is especially useful in teaching environment in classroom at schools, colleges and universities.

**Personalize Default OSD Screen** WiPS710-ENT supports changing default background screen with instructions tailored to the room and client logo.

### WiPS Mobile App for iOS and Android Devices



SidePad



Wifi-Doc



(Optionally Purchase)



MirrorOP Sender



MirrorOP Presenter