



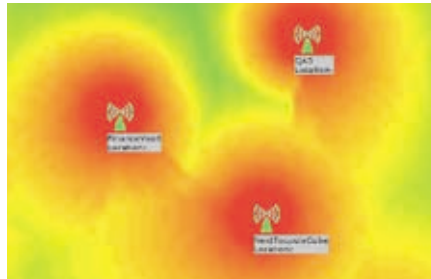
205 Westwood Ave, Long Branch, NJ 07740
 Phone: 866-94-BOARD (26273) / (732)-222-1511
 Fax: (732)-222-7088 | E-mail: sales@touchboards.com

Firetide WLAN Controller FWC 2000 Series

Firetide WLAN Controller 2000 Series is perfectly suited for deployments such as medium sized enterprises, offices, campuses and hospitality. This rack mountable controller supports management and mobility for up to 50 Access Points, expandable up to 150 APs with stacking. With no licensing for AP scaling and features, the controller solution is simple, flexible and ready to deploy. Equipped with rich enterprise features and aggressively priced, this controller offers the best value for the price. Additionally, the controller features Firetide's wireless platform software from our mesh platform that is highly optimized for transporting high performance applications such as video, VOIP over wireless.

Superior Performance and User Experience

The FWC 2000 is an integral part of the Firetide Wi-Fi access solution, which includes HotPoint® access point, HotClient™ customer premises equipment, HotView Pro network management software and Firetide Mobility Controller for client and infrastructure mobility. The FWC 2000 brings in support for 802.11n standard and offers management of up to 50 access points. Building on its extensive experience with wireless mesh



Coverage gap detection tool in Firetide WLAN Controller.

backhaul, where bandwidth is precious, Firetide designed its access solution to distribute intelligence at the edge, resulting in superior coverage and user experience with only a minimal amount of bandwidth taken up by critical control traffic to the centralized WLAN Controller.

No Upsell — Low CAPEX and OPEX

With no licensing and feature upsell, the FWC 2000 series reduces the CAPEX cost of deploying a WLAN solution by more than 50% of the competition. The management of the WLAN is included free of charge with every controller through a simple, intuitive web UI. There are no ongoing maintenance fees for the software or the hardware. This reduces the ongoing costs of maintaining a WLAN.

Easy Scaling Through Stacking/Virtualization

FWC 2000 can scale up to 150 APs in the WLAN by stacking 3 controllers together. Each of these controllers come with support of 50 APs. This enables ease of management of all 150 APs and clients in the WLAN as one network. The stacking feature also enables seamless mobility of Wi-Fi clients across IP and controller domains.

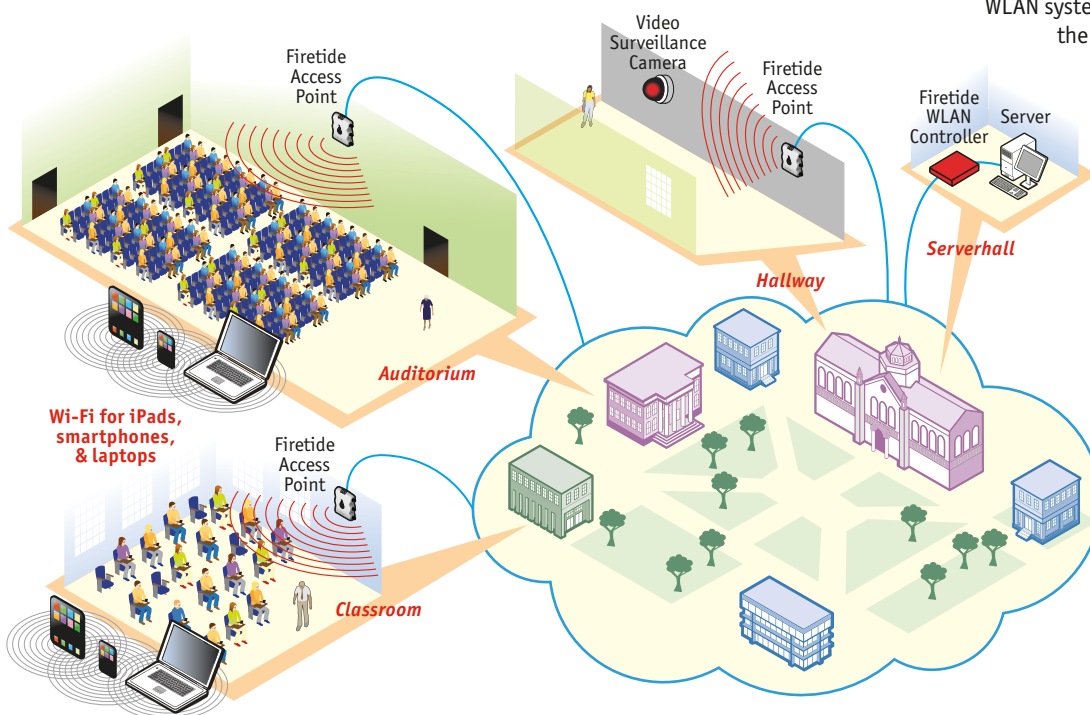
High Performing Wireless Platform

Firetide has been the leading provider of wireless solutions for critical applications such as video surveillance. Firetide WLAN controllers and access points come equipped with the same platform software from the mesh product line. They bring in the same level of high performing, low latency and high security characteristics from the outdoor mesh environment into the enterprise WLAN.

High Availability — Redundancy, Self Healing and Intelligent Traffic Routing

Focused on improving the reliability and availability of the WLAN system, FWC 2000 brings in features like WLAN self healing and intelligent data traffic routing. WLAN self healing increases the availability of the WLAN systems by automatically recovering the WLAN in case of AP failures.

Although the APs are working in controller mode, the traffic goes through the controller only when handling L3 roaming traffic. So even if the controller goes down the APs are able to move traffic. For critical networks, customers can enable 1:N redundancy on the controller whereby one controller can serve as a backup for up to 3 controllers. This eliminates any single points of failure in the network even further thereby increasing the WLAN availability.



Firetide WLAN Controller FWC 2000 Series



Firetide WLAN Controller FWC 2000 Series

Highly Secure

Firetide FWC 2000 supports all industry standard security protocols including MAC-ACL, WPA/WPA2, 802.11X and RADIUS. It supports configuration of 64 different security and configuration profiles of the network. It also features on/off remote capability, which enables absolute security during non-business hours. The FWC 2000 supports wireless intrusion detection features such as Enhanced Rogue AP detection. It prevents bandwidth abuse by allowing administrator to program bandwidth limits on a per configuration basis. Abuse can be located by pinpointing the misbehaving AP.

“Peace of mind” RF Management

Firetide FWC 2000 features automatic AP transmit power and channel assignment to ensure adequate coverage and minimize interference. The WLAN will automatically heal after loss of an AP or RF interference through power adjustments on APs nearby. FWC 2000 ensures that clients are load balanced across the network based on the number of clients per AP. A limit for maximum bandwidth utilization per AP is also featured, as is a signal strength threshold/data rate threshold for clients on the BSS.

Fast Roaming

FWC 2000 supports seamless rapid mobility across VLAN and subnets including 802.11i pre-auth and fast roaming. The roaming support is across L2, L3 for video, audio and voice over wireless client.

Management Interfaces

Firetide FWC 2000 can be managed through an intuitive web browser UI, with support for IE, Firefox, Safari and Chrome with SSL encryption. The FWC 2000 has support for SNMP v2c, v3 and SNMP MIB-II, with traps and proprietary configuration MIBs. Optionally, an administrator can use the Command Line Interface (CLI) with SSH encryption for management.

Feature Rich all inclusive with no upsell charge				
Management & Deployment	Multi-level Security	RF Management	Flexible Deployment	Hotspot Service Control
Seamless L3 Mobility	802.11i, WPA2, 802.1x	Automatic Channel Mgmt and Assignment	50 AP /2000 Client Support Per Controller. Expandable Up to 150* APs and 4000 Clients	Guest Access – Captive Portal
Physical AP Grouping	Internal/ External RADIUS Authentication	WLAN Self- Healing	Stacking of 3 Controllers*	Virtual AP and Virtual AP Groups
Auto AP Discovery and Offline Configuration	MAC Access Filtering	Automatic Power Control	1:N Redundancy*	Login Based URL Redirection
Remote Upgrades	SSID Suppression	Coverage Gap Analysis	16 SSID Per Access Points (8 Per Radio)	RADIUS Accounting
Multiple Management Interfaces: SNMP, CLI, HTTP	Location Estimation	QoS/WMM	Backhaul Using Firetide Mesh 7000 or Wireless Point to Point Bridges	Rate Limiting
DHCP	Rogue AP Detection, Rogue Client Blacklisting	Load Balancing	WDS Mode of Deployment in Access points	
Floor Plans/ Planning/ Estimation/ Heatmaps	Active Directory/ LDAP* Integration	Optimization for Video* Transports		

* Only available on the FWC 2000 series. Not on FWC 1000 series.

Physical Specifications	
Network Ports	<ul style="list-style-type: none"> Four GigE 10/100/1000 Mbps Ethernet ports with LEDs IEEE 802.3, 802.3u compliant CSMA/CD 10/100 autosense
Enclosure	<ul style="list-style-type: none"> System LEDs (Power, Test) Ethernet port LEDs (link, status, activity) Reset button (recessed) Weight: 6.4 lb (2.912 kg) Dimensions (WxHxD): 10.3 x 1.7 x 17.3 inches (1-u rack size)
Power	<ul style="list-style-type: none"> DC Input: 100–240 V, AC/50–60 Hz, Universal Input, DC 5V/8A (internal power supply) Port 1: IEEE 802.3 at compliant PoE External power supply: 100–240 VAC, 50/60 Hz
Environment Specifications	<ul style="list-style-type: none"> Operating temperature: 0°C to +60°C Storage temperature: -20°C to +70°C Humidity (non-condensing): 10% to 90% Storage humidity (non-condensing): 5% to 95% Maximum altitude 15,000 feet (4600 meters)
Included Accessories	<ul style="list-style-type: none"> AC power adapter with cord (non-North America power cord is separate orderable item) Bracket for rack mounting
Warranty	<ul style="list-style-type: none"> 1 year warranty for hardware Extended 3 year warranty available for purchase

Other Firetide Products



Mesh Nodes
HotPort Indoor & Outdoor Mesh Nodes



Access Points
HotPoint Indoor & Outdoor Access Points



CPE
HotClient Indoor & Outdoor Customer Premises Equipment



Software
HotView Pro, Firetide Mobility Controller, Firetide WLAN Controller



Accessories
Antennas, Mounting Kits, Cables, etc.

Touchboards
205 Westwood Ave, Long Branch, NJ 07740
Phone: 866-94 BOARDS (8273) / (732) 222-1511
Fax: (732) 222-7088 | E-mail: sales@touchboards.com



www.firetide.com

140 Knowles Drive, Los Gatos, CA 95032

Phone: +1 408-399-7771 | Fax: +1 408-399-7756 | Email: info@firetide.com